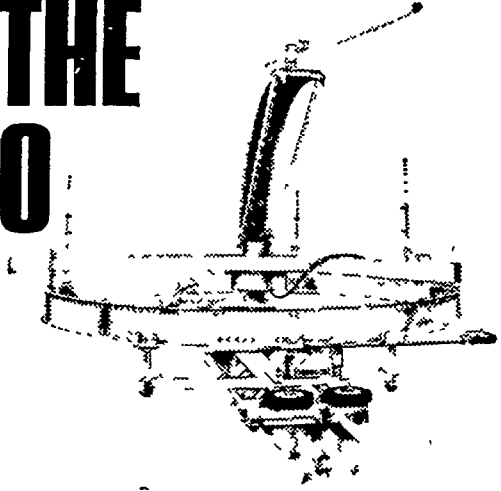


## Lancaster Farming Ads Pay!

# FEWER TRIPS UP THE SILO



Simple operation! No weights to adjust. No drive drums to manhandle. No need to ride the auger shroud to keep the auger cutting.



Save **BIG** with Jamesway  
"Cold weather specials"!  
Get greater value than ever before.  
Don't delay — offer is limited!



### M. E. SNAVELY

445 South Cedar St., Lititz, Pa. 17543  
Ph. 626-8144



# PARDON US IF WE KEEP OUR SERVICE DEPARTMENT CLEAN

Don't let our housekeeping surprise you. We get our share of dirt, grease, and litter. Only we keep it moving — out the door. That means we do better service work... and faster, too. We get more done, at lower cost to you. See us for quality equipment care.

WITH US, SERVICE  
IS A PROFESSION...  
NOT A SIDELINE



**Wenger Implement Co.**      **A. B. C. Groff, Inc.**  
Buck                              284-4467      New Holland              354-4191

**M. S. Yearsley & Sons**  
West Chester              609-2990

**Landis Bros. Inc.**  
Lancaster                      393-3908

**Shotzberger's**  
Elm                              665-2141

## French Fries Exceed Baked Potato Sales At 1968 Farm Show

HARRISBURG, Jan 16 — Baked potatoes a Farm Show tradition, played second fiddle to french fries at this year's show

Owen Barkley, general manager of the Pennsylvania Potato Growers' Association and the man in charge of the booth where both the baked and fried varieties were sold, attributed the change to the age of Farm Show visitors

"We had more young people this year and they seemed to prefer french fries," Barkley said

On a good day when the attendance topped 100,000 he said his booth sold 8,000 cups of french fries and almost that many baked potatoes This was

### • Chicago

(Continued from Page 2)

Receipts 19,100 compared with 22,100 last week and 21,000 last year, twelve market receipts 173,100 compared with 179,000 last week and 168,500 last year

**SLAUGHTER STEERS** — Prime 1175-1400 lbs Yield Grade 3 and 4 28 25-28 75, load 1350 lbs 28 85 on Monday High Choice and Prime 1100-1325 lbs 27 50-28 25, Choice 950-1350 lbs Yield Grade 2 to 4 26 25-27 75, largely 26 50 up, Mixed Good and Choice 25 50-26 50, Good 24 00-25 50, Mixed Standard and Good 23 00-24 00, limited volume Standard 21 00-23 00

**SLAUGHTER HEIFERS** — On Wednesday, three loads Prime 920-1025 lbs mostly Yield Grade 3 26 75, High Choice and Prime 950-1025 lbs Yield Grade 2 to 4 25 50-26 25, Mixed Good and Choice 24 50-25 50, Good 22 50-24 50

**COWS** — Utility and Commercial 14 50-16 00, High Yielding Utility 16 25-16 50, Canner and Cutter 13 50-15 50

**BULLS** — Utility and Commercial 20 00-23 00

not the total amount sold at the show since most food booths also sold potatoes had no qualms about eating the skins.

The eight-ounce potato baked at the show became a five-ouncer by the time the water dissipated in the baking process. The baked spuds were all hand scrubbed so that visitors

This year's potatoes were grown in Schuylkill County. Each year the potatoes come from a different section of the state.

## FEED CATTLE FASTER AND MORE EFFICIENTLY THAN EVER BEFORE!



NOW! Feed up to 200' of bunk per drive... Feed multiple lots... Blend complete rations with...

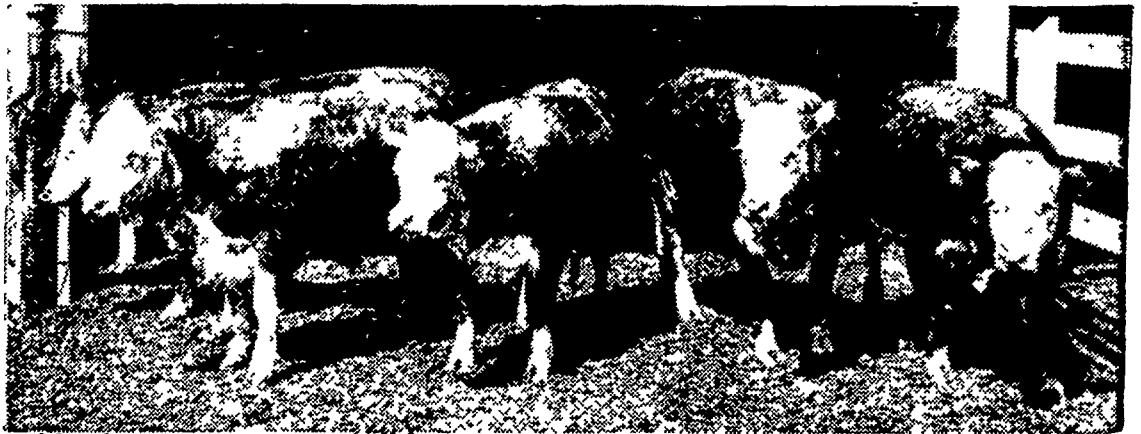
### VAN DALE'S NEW AUTOMATIC MULTI-FEEDERS

From the pioneer in silo unloading, come two low-power, mammoth capacity, bunk feeders for in-the-barn or feedlot feeding. You can feed from more than one silo (at the same time). Feed out to from one to four-or-more lots. Feed any material with big 9" or 12" true, bearing-suspended augers, (no metal-to-metal contact.) Feed entire bunk at one time; eliminate crowding.

High capacity and dependability... call us and we'll come out to see you, at your convenience.

## CALEB M. WENGER

R. D. 1, Drumore Center 548-2116 QUARRYVILLE, PA.



## 10% extra daily gain—on 8% less feed

...with Ful-O-Pep Super Cattle-izer Beef Supplement

We've got the figures! Over 175 lots of steers and heifers have been fed Ful-O-Pep Cattle-izer at the Ful-O-Pep Research Farm. The usual improvement was 7% to 12% in daily gain... on 6% to 10% less feed per cwt. gain... with usual net return of \$3 to \$7 more per head! Comparison lots were fed exactly the same except for the "Cattle-izer." It's a great new development in ruminant nutrition.

How does it work? The "Cattle-izer" principle changes the proportion and concentration of several organic acids produced in the rumen... resulting in about 10% more useful energy from the feed.

Let us show you more records... more details on how Ful-O-Pep Super CBS can help you get faster, more efficient gains... higher net returns! Come in.

## H. M. STAUFFER & SONS, Inc. WITMER

**Grubb Supply Co.**  
Elizabethtown

**Stevens Feed Mill, Inc.**  
Stevens

**Harold H. Good**  
Terre Hill