

THE
KEY BANK
COUNTY FARMERS NATIONAL
Member F.D.I.C.

If you don't have a Christmas Club at County Farmers...



JOHN H. NISSLEY watches his steers eat at his new self-feeding bunk.

He is presently feeding 210 head — half Angus and half Hereford. L. F. Photo

● **County Steer**

(Continued from Page 1)

dealer and sent directly to the Mount Joy farm.

How does he feed his cattle? "I feed silage with corn chop and protein at the beginning," he said. "Then at about 40-60 days before marketing the steers I take them off silage and feed ground ear corn to finish them. For cheap gain I like to feed silage," he said.

Nissley said the buyers and packers give no quarrel about feeding silage like they did

years ago. Since the consumer now wants leaner meat they don't say anything about it. In fact, his cattle dealer said the packers don't even ask anymore

John erected his new 24'x80' silo and the 60'x80' open truss pens this summer to help in a labor problem. "The farm can't compete with industry in the labor market," he said. "That is why I built this new setup."

Nissley has 165 acres on his farm and feeds everything he raises to the steers except for wheat and 10 acres of tobacco. The farm has been in the family for at least three generations

● **Chicago**
(Continued from Page 2)

26,000 last year. Twelve market receipts 178,100 compared with 190,300 last week and 189,700 last year.

SLAUGHTER STEERS — On Wednesday, Prime 1225-1375 lbs Yield Grade 3 and 4 27 00-27 50 On Monday, several loads brought 27 75, the lowest weekly top since July High Choice and Prime 1100-1350 lbs 26 50-27 00, Choice 975-1400 lbs Yield Grade 2 to 4 25 25-26 50, mostly 25 25-26 00 late, Mixed Good and Choice 950-1425 lbs 24 50-25 50, Good 23 75-24 75, Standard and Low Good 22 00-23 75

SLAUGHTER HEIFERS — On Wednesday, High Choice and Prime 900-1025 lbs Yield Grade 3 and 4 25 25-25 60, load Prime 1025 lbs. 25 85 Choice 850-1025 lbs Yield Grade 2 to 4 24 25-25 25, Mixed Good and Choice 23 75-24 50, Good 22 75-23 75, Standard and Low Good 21.00-22 75.

COWS — Late sales, Utility and Commercial 14 75-16 00, High Yielding Utility 16 00-16-75, Canner and Cutter 13 50-15-75.

BULLS — Utility and Commercial 20.00-22 50.

Did you know — The State Forests are traversed by more than 3,500 miles of roads and 2,750 miles of trails. As a result many of the best hunting grounds, finest fishing streams and most scenic views within the Commonwealth are found in the State Forests. (Dept. of Forests and Waters)

**Lancaster Farming
Classified Ads
Get Results**

**MAKE
CHRISTMAS DREAMS
COME TRUE
Give John Deere Toys**

Be a hero. Give him (or her) a pedal-driven John Deere Riding Tractor. It's rugged... realistic... easy to ride, easy to steer. Matching trailer also available. We offer a complete line of John Deere 1/16 scale-model toys—tractors, bulldozer, wagons, new baler... other implements including multiple-toy farm sets. Fulfill your youngsters' dreams with fun-filled gifts that keep on giving all year long. Stop in now!
SHOP WITH US FOR CHRISTMAS!



CHECK OUR COMPLETE SELECTION OF QUALITY JOHN DEERE TOYS

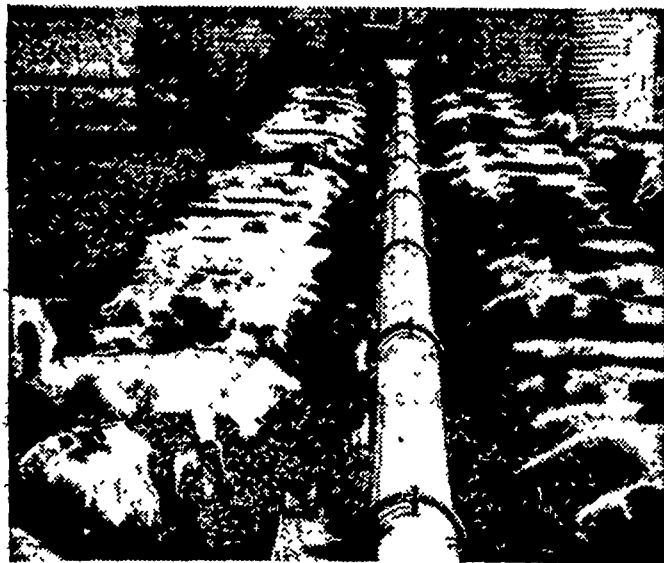
Wenger Implement Co. **M. S. Yearsley & Sons**
Buck 284-4467 West Chester 609-2990

Landis Bros. Inc.
Lancaster 393-3906

A. B. C. Groff, Inc.
New Holland 354-4191

Sholtzberger's
Elm 665-2141

**FEED CATTLE FASTER
AND MORE EFFICIENTLY
THAN EVER BEFORE!**



NOW! Feed up to 200' of bunk per drive... Feed multiple lots... Blend complete rations with...

VAN DALE'S NEW AUTOMATIC MULTI-FEEDERS

From the pioneer in silo unloading, come two low-power, mammoth capacity, bunk feeders for in-the-barn or feedlot feeding. You can feed from more than one silo (at the same time). Feed out to from one to four-or-more lots. Feed any material with big 9" or 12" true, bearing-suspended augers, (no metal-to-metal contact.) Feed entire bunk at one time; eliminate crowding.

High capacity and dependability... call us and we'll come out to see you, at your convenience.

CALEB M. WENGER

R. D. 1, Drumore Center 548-2116 QUARRYVILLE, PA.