

# MARKET NEWS REPORT

## At Lancaster Yards

### Weekly Review

December 15, 1967

**CATTLE 2400**—Compared to last weeks close, slaughter steers 50-1.00 lower, most decline on Good over 1200 lbs.; cows and bulls steady to 50c lower; feeder steers steady. Supply included an estimated 50 percent slaughter steers, 20 percent cows and bulls with the balance mainly feeder steers.

**SLAUGHTER STEERS**—Choice 1000-1350 lbs. 26-27.50; few head mixed Choice & Prime 1200-1275 lbs. 27-27.85; mixed Good & Choice 900-1250 lbs. 25-60-26.75; load mixed Good & Choice 1330 lbs 25.50, Good 950-1250 lbs 24.35-26; Good 1250-1400 lbs. 23.60-25; Standard to low-Good 900-1250 lbs 22.50-24.50, load Standard 1200-1500 lbs. 20.25-21.60

**COWS**—Utility & high yielding Cutter 15.50-17.25, few head 17.35-17.75; Cutter 14.50-16.50; Canner & low-Cutter 13-14.75

**BULLS**—Choice 25-26, few head on Mon 26.50; Good 23-25, Utility & Commercial 22.25-24.50, few head 24.75-26.50; Cutter & low-Utility 21-22.

**FEEDER STEERS**—Couple loads Choice 525 lbs 28.50; two loads Choice 470 lbs \$27; mixed Good & Choice 750-950 lbs. 23-50-24.25

**CALVES 400**—Vealers \$1-2 higher.

**VEALERS**—Choice 42-44.50, few head 45-46.50, Good 38-42, Standard 35-39; Utility 30-35.50, Cull 95-120 lbs. 25-29, 70-90 lbs 20-26

**HOGS 950**—Barrows & gilts 25-50c lower US 1-2 195-230 lbs. 19.75-20.35; Few US 1, 200-205 lbs 20.50. US 1-3 200-240 lbs 19-19.50; US 2-3 205-255 lbs 18-50-18.60. US 2-3 250-280 lbs 17-60-18.25

**SHEEP 150**—Slaughter lambs (Continued on Page 3)

### Auction Only

December 13, 1967

**CATTLE 552**—Compared to last Mon., slaughter steers uneven, 25-75c lower, with most decline on Good over 1200 lbs.; cows steady to 50c lower; bulls weak to 50c lower. Supply included 27 percent cows.

**SLAUGHTER STEERS**—Choice 1000-1350 lbs. 26-27.35, few head mixed Choice & Prime 1200-1275 lbs. 27.50-27.85; mixed Good & Choice 900-1250 lbs. 25.60-26.75; Good 950-1250 lbs. 24.35-25.75, 1250-1400 lbs. 23.60-24.85; Standard to low-Good 900-1250 lbs. 22.50-24.50; load Standard 1200-1500 lbs. 20.25-21.60

**COWS**—Utility & high-yielding Cutter 15.50-17.25, few head 17.35-17.50; Cutter 14.50-16.25; Canner & low-Cutter 13-14.75. (Continued on Page 3)

## Vintage Auction

December 12, 1967

**CATTLE 661**—Compared to last Tues., slaughter steers steady to 75c lower, the early sales of Choice being steady; cows steady to 50c lower with best decline on Canner and low-Cutter; bulls steady to 25c lower. Supply included 28% cows.

**SLAUGHTER STEERS**—Choice 1000-1350 lbs. 26.75-28.10, few head Choice & Prime 28.25-28.85, with three head 29-29.35; high-Good to low-Choice 26.25-27; Good 900-1275 lbs. 24.25-26.25; Standard to low-Good 23-24.50.

**COWS**—Utility & high-yielding Cutter 15.50-17, few head 17.10-17.60; Cutter 14.50-15.75; Canner & low-Cutter 13-14.75.

**BULLS**—Good 22.85-24.50, couple Choice 25-25.50; Utility (Continued on Page 3)

## New Holland Auction

December 14, 1967

**CATTLE 676**—Compared to last Thurs., slaughter steers uneven, small supply Choice steady to weak, Standard & Good steady to 50c lower with most decline on weights over 1200 lbs.; cows 25-75c higher; bulls steady to 50c lower, with few 1500-2200 lb. Utility & Commercial \$1 lower; feeder steers steady. Supply included 36 percent cows & 21 percent feeder steers.

**SLAUGHTER STEERS**—Choice 950-1250 lbs. 26.60-27.75, eight head 28.10-28.75; high-Good to low-Choice 900-1200 lbs. 25.60-26.75; Good 900-1250 lbs. 24.50-26, 1250-1400 lbs. 24-25.50; Standard to low-Good 23-24.25

**COWS**—Cutter & Utility 15.50-17.35, few head 17.50-17.75; Canner & low-Cutter 13.75-15.50

**BULLS**—Choice 25-26.10; Good 23-24.60; Utility & Commercial 22.25-24.50, several 1500-2200 lbs. 24.75-26.10; Cutter & low-Utility 20.50-22.25.

**FEEDER STEERS**—Choice 830-935 lbs. 24.35-24.50, few mixed Good & Choice 760-860 lbs. 23.85

**CALVES 404**—Vealers \$1-2 higher.

**VEALERS**—Choice 42.50-45.50, couple 47.50; Good 39-43; Standard 35.50-40; Utility 30-36; Cull 95-120 lbs \$26-30, 70-90 lbs 22-27.50.

**SHEEP 13**—Few Choice 70-85 lb. wooled slaughter lambs steady at 23-26.

December 13, 1967

### COWS

Receipts of 169 cows, 3 bulls and 10 heifers sold stronger on fresh cows and close springers. Fresh cows, Holstein 475-1010,

Guernseys 140-340; Other breeds 375-450; Bulls 125-210; Heifers 145-315.

### HORSES

December 11, 1967

Receipts of 210 horses sold steady; killers higher. Riding horses 95-350; Driving horses 115-235; Pony mares 25-65; Geldings 20-55; Work horses (pair) 325-540; (single) 160-250.

### HOGS

December 11, 1967

Hog receipts totaled 688 head and sold 25 lower. Retail 20.50-22; Wholesale, No.'s 1-3, 19.25-20.25; Heavyweights 18.25-19.50; Sows 15-15.25.

### CALVES

December 11, 1967

Calf receipts of 131 head sold \$1 to \$2 higher. Choice and Prime 39-45. Good and L. Choice 36-38.50; Standard 32-35.50; Common 15-30.

## FUTURES TRADING

(Closing bids as of December 14, 1967)

	Midwestern Live Cattle — Chicago	Live Hogs — Chicago	Maine Potatoes — New York
December	26.00	19.25	
January '68		19.12	
February	25.52	19.00	
March		18.75	2.47
April	25.00	19.00	2.65
May		19.65	3.07
June	25.12	20.00	
July	26.02	20.50	
August		20.00	
September		19.50	
November			2.35

a-asked b-bid n-nominal

Trend Cattle are irregular, Hogs are weaker and Potatoes are irregular

## Chicago Cattle Weekly Review

**CATTLE**—Compared with last weeks close, slaughter steers were 50 to 100 lower. Slaughter heifers sold 50-75 lower. Cows declined 25-50, bulls were unchanged. In the carlot dressed meat trade at Chicago, steer and heifer beef sold steady to 100 lower, most decline on Choice. Cow beef traded steady to 50 lower.

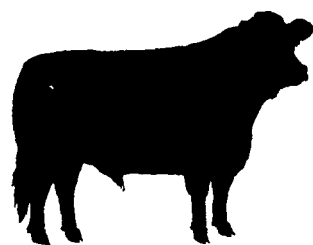
Local receipts 25,500, compared with 22,000 last week and (Continued on Page 8)

## Robert K. Rohrer

Bulldozing - Grading  
Patz Sales & Service

Barn Cleaners - Silo  
Unloaders - Cattle Feeders

Quarryville, R. D. 1  
Hensel 548-2559



He never had it so good!

And neither have you, if you've got an ample supply of home grown grains. These, combined with economical Young's pre-mixes and supplements, will give you the best finished feeds at the least cost available in several years. Get in touch with us or the Youngco representative nearest you.

EARL L. UMBLE  
2460 Willow Glen Dr.  
Lancaster  
717 / 393-3208

CASELL C. MUMMAU  
R. D. 1, Mount Joy  
717 / 653-4355

ROBERT L. YOHN  
R. D. 1, Narvon  
215 / 445 6388

YOUNGCO, INC. Roaring Spring, Pa.

## LOOKING FOR A PERFECT MATCH?

Your Livestock and Our Qualified Buyers

Monday — 10:30 A.M. Fat Hogs and Shoats

2:30 P.M. Fat steers, bulls, cows and veal

Horse Sale — Monday at 10:00 A.M.

Dairy Sale — Wednesday at 12:30 P.M.

Fat steers, bulls, cows & veal —

Thursday at 12:30 P.M.

## New Holland Sales Stables

New Holland, Penna.

717-354-2194

Abe W. Diffenbach, Sales Manager

## Vintage Sales Stables, Inc.

PARADISE, PENNA.

Bulls, steers, butcher cows,  
Hogs, lambs and veal calves  
Sold on Commission  
Sale every Tuesday 1:30 P.M.

Fat hogs and Feeder pigs sale  
Every Saturday at 10 A.M.

For marketing information  
Phone Area Code 717-442-4181

Box 100 Paradise, Pa.

10 mi. East of Lancaster on Rt. 30

Kenneth E. Hershey, Sales Manager

**MAKE DREAMS COME TRUE! JOIN A FULTON CHRISTMAS CLUB**

**FULTON National BANK OF LANCASTER**

PENN SQUARE • McGOVERN AVENUE  
SOUTH DUKE STREET • AKRON  
EAST PETERSBURG • GAP • MANHEIM  
MOUNTVILLE

Member Federal Reserve System  
Member Federal Deposit Insurance Corporation