



CHAMPION SHOWMAN two days in a row. Michael Hosler topped the Lancaster County Contest on Tuesday and won with different judges again on Wednesday at the District 4-H Beef Show. L. F. Photo

● 4-H Show

(Continued from Page 1)

manship contest. Mike won on Tuesday in the local county contest and did it again in the district contest on Wednesday.

Lancaster placings in the district show are as follows:

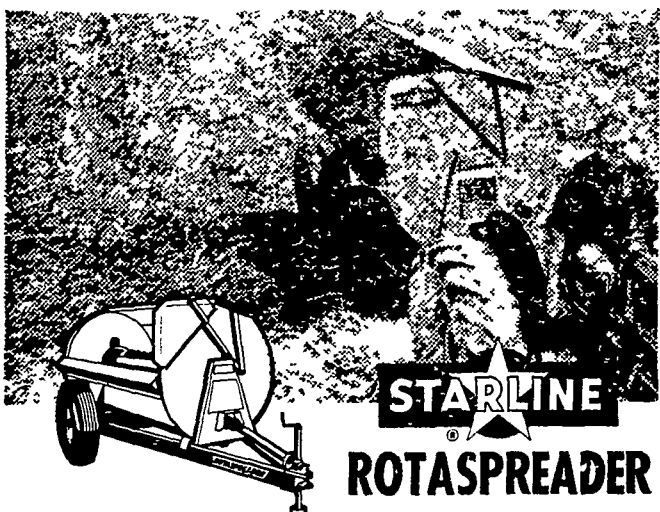
ANGUS, Light-weight, 5, Ronald Enck; Medium-weight, 1, Donald Bollinger; 3, Dale Bushong; 4, Jeffrey Brubaker; 5, William Frey; Light-heavy-weight, 1, Harold Welk; 3, Gary Neff; 5, Jim Thompson; Heavy-weight, 2, Linda Kay Ober; 2, Gary Dean; 4, Glenn Brubaker.

Nancy Herr; 2, Kenneth Longenecker; 3, Judy Thompson; 4, Michael Hosler; Medium-weight, 1, Ray Brubaker; 2, Dennis Rohrer; 3, Nancy Zimmerman; 5, Ken Buckwalter; Light-heavy-weight, 1, Nancy Frey; 2, Joe Wivell; 3, Dennis Brubaker; 4, Janice Wenger; 5, Tom Houser; Heavy-weight, 1, Gary Forry; 2, Darlene Neff; 3, Dale Hershey; 4, Charles Barley; 5, Tom Wivell.

SHORTHORN, 1, Larry Rohrer; 3, John Welk; 4, David Long; 5, Linda Hess.

SHOWMANSHIP, 1, Michael Hosler; 2, John Welk; 3, Marvin Nissley.

SPREAD ANY MANURE ...liquids to frozen solids



Powerful chain-flail action of the Starline Rotaspreader shreds and spreads any type manure in broad, even swaths up to 20-feet wide. Simple construction reduces maintenance. "Seal-of-Quality" galvanized steel body resists corrosion. Separate chassis hauls heaviest loads. See us soon for full details and a demonstration.

L. H. BRUBAKER

R. D. 3, Lititz, Pa.
350 Strasburg Pike, Lancaster

Phone: Lanc. 397-5179 — Strasburg 687-6002 — Lititz 626-7766

● Veal Calf

(Continued from Page 1)

high fat all milk-product replacer and to house them in an elevated tie stall.

You should contact the Extension Office if you are interested and you will then be mail-

ed a new 4-H Veal Production latter part of February at New Holland.

A special meeting will be held at a later date and you should obtain a calf born between December 10 and December 20.

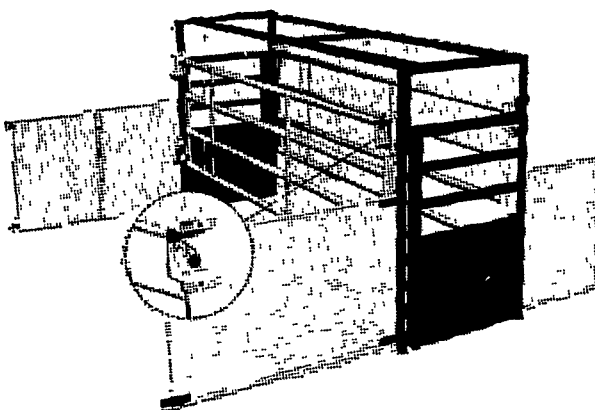
"Veal production has good profit potential and is a practical youth project on many farms," Plastow said.

"If honor be your clothing, it will last a lifetime."

The roundup will be held the

BROWER BETTER-BUILT

Hog and Cattle Equipment

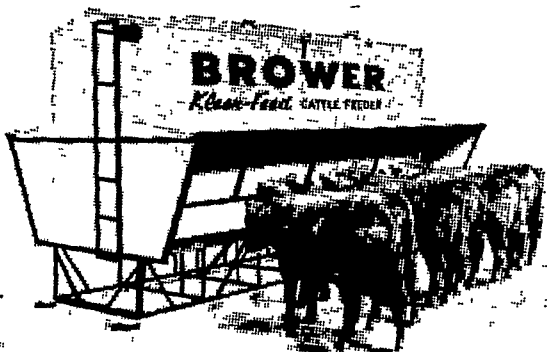


Farrowing Crates

- Cleaner — more sanitary
- Sows cannot crush pigs
- No draft on pigs
- Sets up in seconds — no bolts or nuts
- Saves 1-3 extra pigs out of each litter
- Sturdily built for larger sows

Low-Boy Hog Feeders

- Guaranteed 15 years
- 12 - 16 ga. self closing doors
- Easy feed flow adjustment
- Weatherproof
- Eliminates crowding
- Saves feed
- Various sizes and models

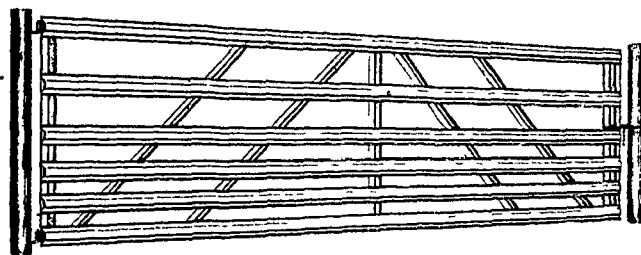


Kleen-Feed Cattle Feeder

- Low level trough stops waste
- Weathertight hopper
- Canopy protects feed in trough
- Feed flow easily adjusted
- Handy ladder
- Base built like a bridge

Zincgrip Steel Panel Gates

- Made of Armco Zincgrip — Special rust resisting steel
- Sturdy reversible hinges
- Smooth edges
- Various sizes
- 4' - 16', 4 - 5 x 6 Panel



Also:

- Infra-red gas brooder
- Sow Waterers
- Hog Founts
- Creep Feeders
- Lamb Creep Feeders
- Cattle Waterers
- Holding Crates
- Steel Panel Gates
- Feed Mixers

Write or stop in for free illustrated catalogue

Distributed Exclusively By:

E. M. HERR EQUIPMENT, Inc.

Willow Street R. D. #1, Pa.

Ph. AC 717 464-3321