

# Lancaster Farming

VOL. 13 NO. 1

Lancaster Farming, Saturday, December 2, 1967

\$2 Per Year

## Beef Roundup Scheduled For December 5 & 6

County Agent M. M. Smith sent information relating to the county 4-H Baby Beef Roundup and Southeast District Show and Sale this week, to all 4-H Baby Beef Club members.

The contents of the letter sent from the Extension Office, are as follows.

"All Lancaster County steers are to be brought to the Stock Yards on Tuesday morning, December 5, between 8:00 a.m. and 11:00 a.m., unload them through the chutes at the west end of the hog barn where they will be tagged, weighed and put into their stalls. (This will not be the sale weight.)

"Starting promptly at 1:00 p.m. Tuesday, we will conduct our county roundup for the purpose of project completions and to select our State Farm Show. (Continued on Page 3)

## Grange Ends National Meet With New Goals

SYRACUSE, N. Y. — The National Grange last week ended its Centennial Session, attended by more than 12,000 of its 620,000 members, with new legislative goals to begin its second century. Emphasizing that Grange goals are dedicated to providing parity of income, opportunity, public service to rural people, the Grange recommended acceleration of programs to produce more job opportunities, along with new medical, literary, water and sanitary facilities for rural areas.

The Grange favors a new national land policy to improve rural communities and conserve natural resources as well as effective farm programs including non-recourse loans to stabilize markets and support farm commodity prices.

The Grange called for import quota restriction for all meats and process meats and prompt enforcement of import quotas on all foreign agriculture products when they interfere with domestic prices.

The Grange endorsed the ac- (Continued on Page 6)

**Lancaster Farming Anniversary Passed With This Issue**  
(See Editorial Page 4)

## Farm Calendar

Monday, December 4

4-6 Farm Income Tax and Social Security Short Course, Penn State University  
7:30 p.m.—Manheim Young Farmers Farm Management Meet., School Ag. Bldg

Tuesday, December 5

4-H Baby Beef Show at Lancaster Stock Yards.

(Continued on Page 13)



THE NEWLY ELECTED COUNTY FFA PRESIDENT Linford Martin, shows his Ayrshire project to Philip Oglie, Garden Spot Vo-Ag teacher. The L. F. Photo was taken on a visit this week to the farm where Linford keeps his projects.

## A New Slant City Congressmen Understand Agriculture, Fulton Says

An urban Congressman has basically the same viewpoints on agriculture as one representing a rural district, Rep. Richard Fulton (D) of Tennessee said in a recent address to the annual meeting of the Tennessee Farm Bureau Federation.

Fulton, who represents the city of Nashville, told his farm audience that "contrary to the view of some, those of us from urban areas are well aware that our food does not miraculously appear in bottles, cans, and the frozen food counters of our grocery stores."

"American agriculture today is an outstanding success in the fulfillment of its major function—the production of the basic needs of life," he said.

"There is hardly a nation in the world that would not gladly exchange its 'farm problem' for ours."

"The unparalleled productivity of American farmers is a major factor in providing the people of the United States with the highest standard of living the world has ever known."

Fulton said the American farm family "must have the opportunity to achieve parity of income without exploiting either the taxpayer or the consumer."

"We must seek to enable the farmer to realize equality of economic opportunity by means (Continued on Page 8)

## New FFA President Sees Land And Living Costs As Farmer's Big Problem

An On-The-Farm Visit

by Everett Newswanger  
Lancaster Farming Editor

The new Lancaster County FFA president thinks high costs are the greatest problem of farmers today.

Linford Martin, member of the Garden Spot Chapter, told this reporter during an on-the-farm visit Wednesday after school, "I think the cost of land and the cost of living are the big problems of the farmer."

## Quality, Not Color Should Determine Limestone Purchases

Aglime is a limestone rock reduced in size by crushing down to the size specified by state law, ACP specifications or both, according to the National Limestone Institute. It has been applied to the soil to "sweeten" it—raise the pH for hundreds of years. Aglime supplies the calcium, magnesium and other minor elements which crops erosion and leaching remove from the soil.

Some limestones are almost pure calcium while others contain varying quantities of magnesium as well as other minor elements and impurities. The lowest grade or acceptable aglime in any state is 65% CaCO<sub>3</sub> (Continued on Page 9)

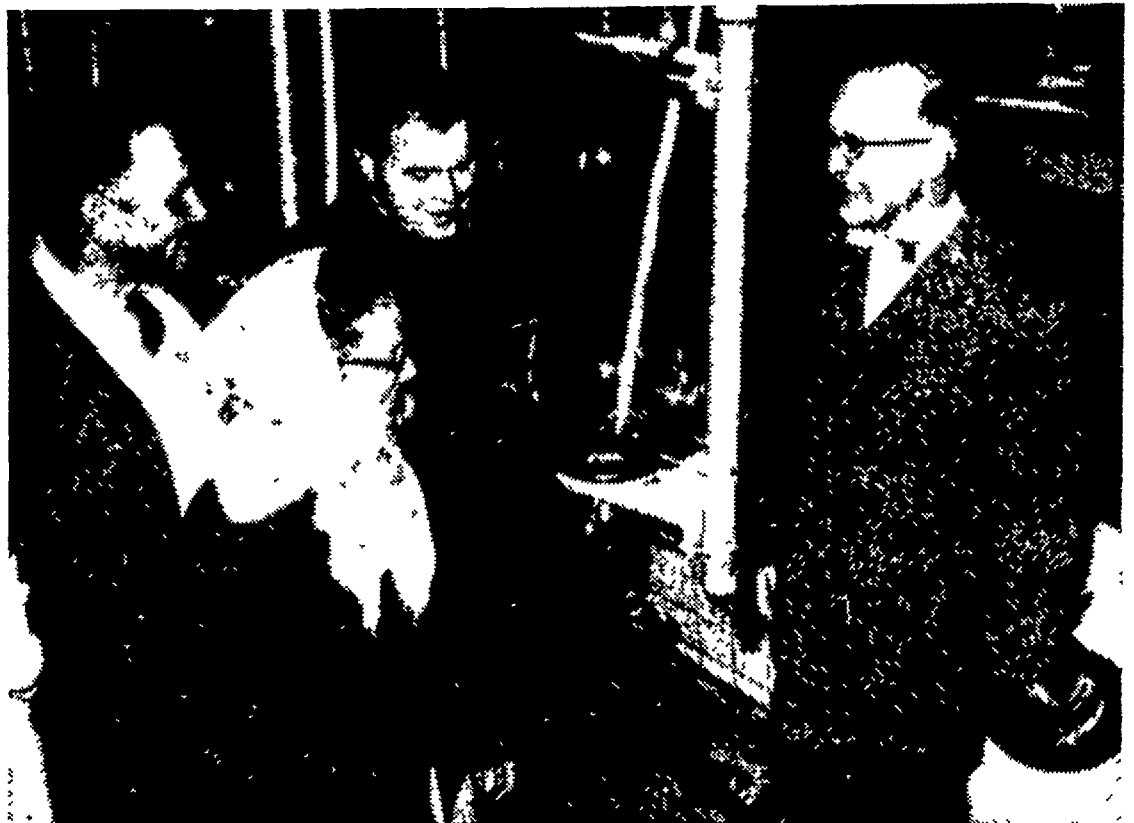
The county president leans toward the self-sufficient family farm as the answer to these high costs. "They say you need to specialize but I feel the farmer is best off being diversified. The 16-year-old high school Junior paused a moment and then clarified what he meant "I mean you should major in one thing like dairying for example, but still have a few chickens, pigs and maybe a steer for your own use. I like farms to be self-sufficient," he said.

Linford also thought a good way to cut costs was for the farmer to be able to do his own farm equipment service work.

And he put a great emphasis on education to accomplish this self-sufficiency. "The way to become self-sufficient is through education," he said.

Martin appreciates his chance to go through high school as he is the first boy in his family to do so. "I am grateful to my parents, to my Ag teachers and chapter," he said. "They have all done a great deal to help me in my problems."

Philip Oglie, Vocational Agricultural teacher at Garden Spot labeled the youth as a sincere fellow and a good student with a B+ average. It is to be noted that Linford is taking all the subjects needed to enter college along with the Vo-Ag course (Continued on Page 8)



AT THE THURSDAY REMODELING DAIRY BARN TOUR. Pictured at the first stop of the Albert Mellinger Farm, Strasburg R1, is (left to right) Mr. and Mrs. Mellinger, Larry Click, Penn State University and Victor Plastow, Associate County Agent. A group of 40

farmers described for size as "very nice considering the snow storm", toured several area farms for ideas on barn construction. Other farms on the schedule were Melvin R. Stoltzfus, Ronks R1; Donald Eby, Gordonville R1 and Donald Hostetter, Parkesburg R2. L. F. Photo