



SIGNING OF THE PROCLAMATION DECLARING PENNSYLVANIA YOUNG FARMERS WEEK. (Seated front row, left to right) Forney F. Longenecker, Lititz R3, President; Governor Raymond Shafer; Frederick Leiser, Watsontown R1, Secretary; (Standing back row) Dr. Glenn Z. Stevens, Penn State; Thomas Bookhammer, Duncansville R2, Treasurer; Lester Calhoun, New Bethlehem R2, Vice President; Jay

Rohrer, Manheim R2, Public Relations; Dean Witmer, Harrisburg, Department of Public Instruction; Brinton Gehart, Area Advertising, Lancaster County currently has six Young Farmer Chapters with five that belong to the State Association. Total state-wide membership is 1285. The annual convention will be held on Nov. 16 at the Yorktown Hotel, York

FHA Emergency Loans To Penna. Farmers Totaled \$596,520

The Farmers Home Administration made emergency loans in Pennsylvania totaling \$596,520 during the fiscal year 1967 to help farmers recover from natural disasters, FHA state director Raymond J Kerstetter announced today.

An accounting for the year ended June 30 showed that 212 farmers in the state obtained

loans from the U.S. Dept. of Agriculture agency to continue operations damaged by storms, floods, drought and freezes.

Demands on the emergency loan program were more than in fiscal 1966 when \$509,210 was loaned.

Kerstetter said 58 counties in the state were designated by the Secretary of Agriculture during fiscal year 1967 as areas in which emergency loans could be made by the Farmers Home Administration to eligible farmers.

The program provides a

standby source of credit for farmers who cannot get emergency credit from other sources.

Emergency loans carry an interest rate of three percent. Repayment schedules vary according to purposes for which funds are advanced.

Information on eligibility for emergency loans may be had at the local county office of the Farmers Home Administration, 222 Post Office Building, Lancaster, Penna 17604

• Vintage

(Continued from Page 2)

ing Cutter 17-18.75, few 18.85-19.35; Cutter 16-18.25; Canner & low-Cutter 14-16.
BULLS—Utility & Commercial 22.50-24.35, few Good 23.35-24.60; Cutter & low-Utility 20-21.85.

ard 36-39.50; Utility 31-36, Cull 95-115 lbs. 25-29, 70-90 lbs. 21.50-25.

HOGS 144—Barrows & gilts steady. US 1-2 200-235 lbs. 20-20.60; Few US 1, 210-225 lbs. 21.25-21.75; US 1-3 195-250 lbs. 19.10-19.85; US 2-3 220-270 lbs. 18.25-19.

SHEEP 57—Slaughter lambs steady to strong.

WOOLED LAMBS—Good &

CALVES 654—Vealers steady to \$2 lower, with Cull \$1-2 lower.

VEALERS—Choice 41-43, few Choice 60-90 lbs. 23-25.50, few to \$45; Good 39.50-41.50; Stand-head 26-27.50; Utility 18-22.



Another New Atlantic Genetic Power Sire

Now In Daily Service



15H121 Eagle Point Design's Bonus — VG

Production: A.B.C. Proved Sire
8 Daus., 8 Rec. Ave. 18,870M 3.84% 721F
Increase over Dams +3,670 +.04% +149
Increase over Hdmts. +3,200 + 95
Type: 8 Classified Daus Ave 82.3
Dif. from Expectancy (7 yrs.) +5.95
Sire: Irvington Pride Admiral — EX-92 & GM
Dam: Hedge Upwey Design's Queen — VG & GMD
3-10y 362d 2X 20,892 3.7% 791
6-10y 365d 2X 22,475 3.8% 860

Bonus is among more than three dozen Genetic Power proven sires available daily at one uniformly low fee thru —

Atlantic Breeders Cooperative

phone: LANCASTER 569-0411 for service

Akron 859-2552 Mount Joy 653-1451
Christiana 593-5098 Quarryville 786-7381
Strasburg 687-6292

FEED CATTLE FASTER AND MORE EFFICIENTLY THAN EVER BEFORE!



NOW! Feed up to 200' of bunk per drive . . . Feed multiple lots . . . Blend complete rations with . . .

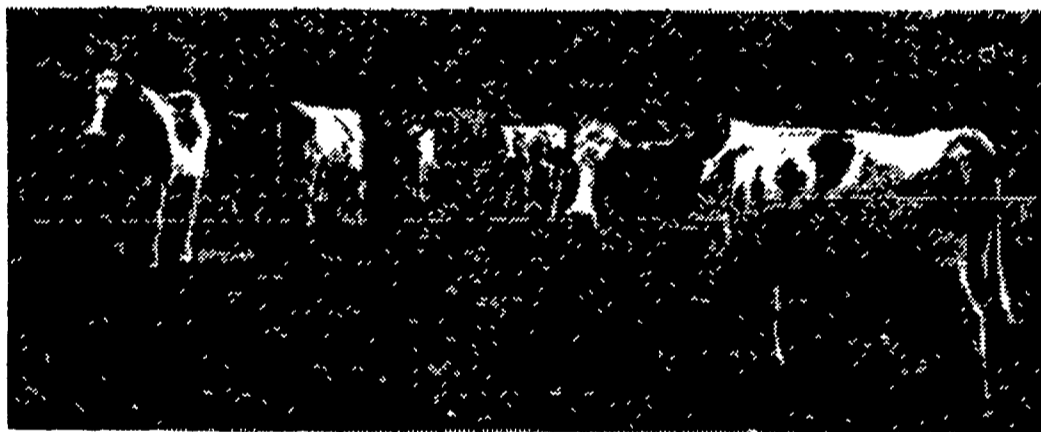
VAN DALE'S NEW AUTOMATIC MULTI-FEEDERS

From the pioneer in silo unloading, come two low-power, mammoth capacity, bunk feeders for in-the-barn or feedlot feeding. You can feed from more than one silo (at the same time). Feed out to from one to four-or-more lots. Feed any material with big-9" or 12" true, bearing-suspended augers, (no metal-to-metal contact.) Feed entire bunk at one time; eliminate crowding.

High capacity and dependability . . . call us and we'll come out to see you, at your convenience.

CALEB M. WENGER

R. D. 1, Drumore Center 548-2116 QUARRYVILLE, PA.



Feed Florin 14% or 16% Dairy Ration to your Herd to make Milk and Money

For a healthy, highly productive herd, Florin enriched dairy feed is scientifically formulated, tested and proved. Feed it regularly, and see the results . . . more milk from cows, more money for you.



Wolgemuth Bros., Inc.

MOUNT JOY, PENNA.

Ph. 653-1451