



PARTICIPANTS IN THE INTER-STATE MILK PRODUCERS COOPERATIVE MEETING. (left to right) Dr Paul E Hand, Economist; J Arthur

Rohrer, Chairman; Miss Anna Mae Donough, Dairy Princess and Harry Kaufman, Secretary of the Philadelphia Dairy Council. — L. F. Photo

● **Hand**

(Continued from Page 1)

Other speakers included Harry Kaufman secretary of the Philadelphia Dairy Council, Gap R1, and Warren Landis, Associate County Agent Victor Plastow, Dairy Princess Anna Mae Donough and Melvin M

Brendle, who gave a director's report J Arthur Rohrer served as chairman for the event. Brendle cited two member-producers, Melvin J Martin, Gap R1, and Warren Landis, Hartman Station Road, for 25 years membership in Interstate, which is marking its

50th anniversary this year. In the balloting for directors in each local, these men were elected: **Christiana Local**, I Eby Hostetter, president, Nathan E. Stoltzfus, vice president; **Marvin E. Hershey**, secretary-treasurer, Malton B Landis and

Harold M. Umble, delegates: Rohrer, president; John Hershey, vice president; Ivan S. Bowman Jr., secretary-treasurer; Roy Book and Melvin R. Stoltzfus, delegates; Melvin G. Groff and J. Kenneth Hershey, alternate delegates.

New Holland Local, Monroe W Good, president; John B. Ranck, Jr., vice president; Robert Book, secretary-treasurer; Lester G. Good and Chester H. Weaver, Jr., delegates; Ferree R. Esbenschade, Jr. and John S. Wenger, alternate delegates and Lester H Good, market committee

Witmer Local, Lester G. Landis, president; C. E. Heller, vice president; Mervin W. Landis, secretary-treasurer; John J. Landis, delegate; C. Richard Landis, alternate delegate and Daniel H Clymer, market committee.

Paradise Local, Charles H

we recommend
K DUPONT K ARMEX®
DIURON WEED KILLER

for weed control in alfalfa

- ECONOMICAL
- LONG LASTING
- EFFECTIVE
- EASY-TO-USE

SEE US TODAY!

P. L. ROHRER & BRO., INC.

SMOKETOWN

Ph. Lanc. 397-3539

Choose the
Right protein
level for
your cows...

USE	WITH
14%	For good legume hay, good pasture
16%	Fair legume hay corn silage with excellent legume hay
18%	Fair grass hay poor legume hay, corn silage with good legume hay
20%	Poor mixed hay, corn silage with poor hay

Without changing feeds

WAYNE 32% Dairy Krums
An all-vegetable protein supplement for premium nutrition. Contains added vitamin A & D sources. Also available with extra 10,000 units of vitamin A per lb.

WAYNE 42% Dairy
Combines the economy of urea with vegetable protein. Also available with extra vitamin A.

You can change your protein level in your dairy grain ration by simply varying the amount of Wayne Dairy Supplement you add to it. Thus when a change in roughage dictates a change in protein level, your grain ration has only a moderate change in taste and formula. No need to make Bossy change to an entirely new grain ration at the same time she changes roughage! Wayne Dairy Supplements are economical too—let you utilize home grains to make a top-quality dairy ration.



MOUNTVILLE FEED SERVICE
R. D. 2, Columbia

H. M. STAUFFER & SONS, INC.
Witmer

WHITE OAK MILL
R. D. 4, Manheim

HEISEY FARM SERVICE
Lawn and Bellaire

MILLERSVILLE SUPPLY CO.
Millersville

HERSHEY BROS.
Reinholds

PARADISE SUPPLY
Paradise

DUTCHMAN FEED MILLS, INC.
R. D. 1, Stevens

POWL'S FEED SERVICE
R. D. 1, Quarryville
R. D. 2, Peach Bottom

ROHRER'S MILL
R. D. 1, Ronks

C. E. SAUDER & SONS
R. D. 1, East Earl

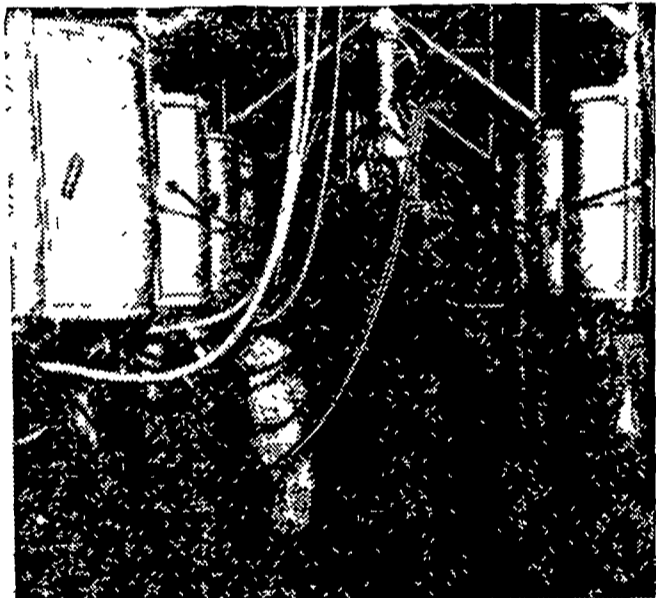
GRUBB SUPPLY CO.
Elizabethtown

Perfection Can Put A Pipeline In Any Barn

WHY BUY A PIPELINE?

FOR AN AVERAGE 40 COW HERD YOU CAN...

1. Save walking 100 miles a year.
2. Save carrying 292 tons of milk a year.
3. Save 200 hours per year on an average herd.
4. Produce higher quality milk.
5. Increase your milk production.



Why Buy A Perfection Pipeline?

1. Engineered for the modern dairy farm of today as well as the dairy farm of tomorrow. We recommend a 2" system so you can increase your herd size and not need a new pipeline in a few years.
2. The only milking control unit that is assembled at our modern new factory on a stainless steel panel. Protested for trouble free operation, self-draining with patented washing features.
3. Built and guaranteed by Sta-Rite Industries, Inc., of Delavan, Wisconsin, a recognized leader in home water systems and agricultural components.

24 Hour Milking Equipment Service — Installation and Service

CALL TODAY AND ASK FOR AN APPOINTMENT

Agway Bee Line's Local Commodity Technicians are:
MR. FRED KERLIN — MR. HAROLD KINSEY



Bee Line Supply Center

1027 DILLERVILLE ROAD, LANCASTER
24 HOUR SERVICE DAILY — PH. 394-0541