

Poultrymen From 5 Foreign Countries Here

Poultrymen from England, Canada, Brazil, Argentina and Czechoslovakia as well as numerous people from the Northeastern United States visited Lancaster county Monday, on the NEPPCO poultry tour that stopped at leading farms, processing plants and poultry equipment establishments. The schedule of stops for the four buses included L. M. Sheaffer's Cloisterdale Farm, Ephrata; Victor F. Weaver, Inc., New Holland; Big Dutchman, Inc., New Holland; Indian River Poultry Farm's Hatchery, Landis Valley; and John J. Oberholtzer's grow-out farm, Leacock.

The group ate a box lunch at the New Holland Park at noon, visited the Pennsylvania Farm Museum at Landis Valley in the afternoon and enjoyed a full course Pennsylvania Dutch dinner at Plain and Fancy Restaurant in the evening.

In welcoming the group at the dinner, John H. Hess, president of the Lancaster County Poultry Association told the tourists that Lancaster County is the most productive county in the state and reportedly accounts for about one percent of the country's total egg production.

"In the poultry business," Hess said, "as in any other industry, what you accomplished yesterday, and even today, cannot be relied on to carry you through tomorrow."

"Our leading poultry people realize this basic fact of life, and as you have observed in traveling through our county today, they are doing something about tomorrow's egg and broiler production right now."

"While none of us know what tomorrow's challenges may involve, we are working toward the basic goal of supplying our own markets. We are located next to one of the prime consuming areas in the world. I feel certain our producers will continue to make whatever adjustments are called for to serve that market."

"Many economists once claimed—some still do—that future production would shift to the areas of lowest cost. Recently, however, opinion suggests that production will be close to consuming areas. The reasons suggested for this—higher transportation and labor costs, for example—make sense, I think."

"The poultry industry in the area is staking its future on the fact that it can continue to get its share of this market despite the best efforts of competitive areas," Hess concluded.

The tour left the restaurant at 8:15 p.m. and was scheduled back in Harrisburg at 9:30 p.m.

● Farm Calendar

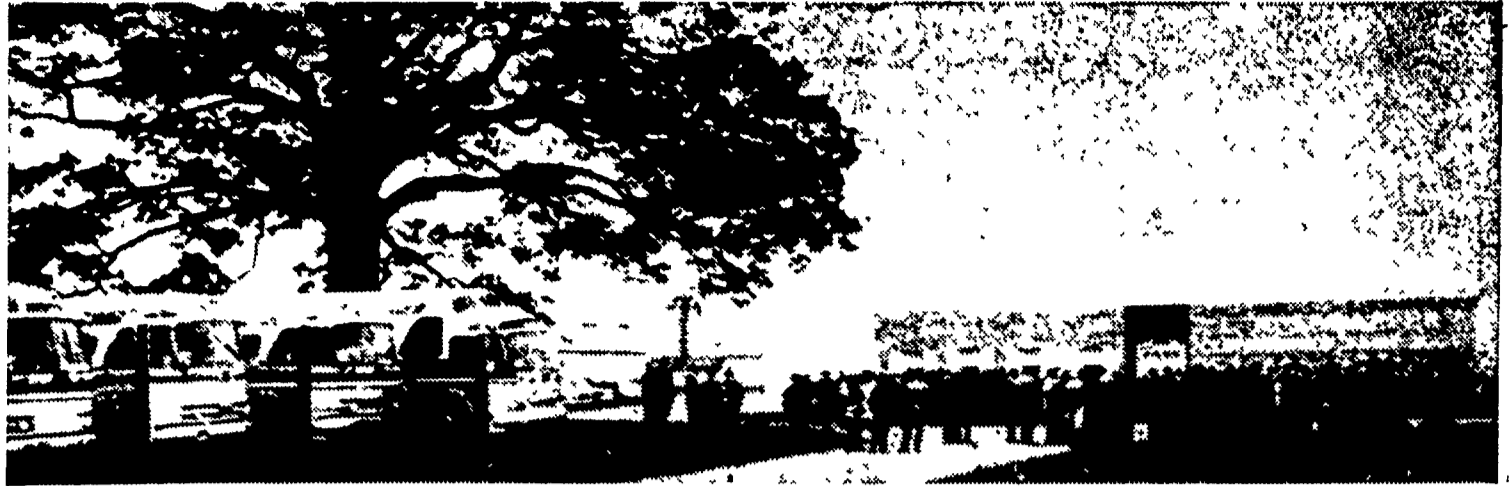
(Continued from Page 1)
7:30 p.m. — Lincoln 4-H Community Club, Mt. Airy Fire Hall

Wednesday, October 18
8:00 p.m. — Southeastern Dist 4-H Baby Beef Show management meet, Union Stockyards

Thursday, October 19
7:00 a.m. — Livestock tour meeting at Lancaster Shopping Center
9:30 a.m. — Art With Fabric Workshop, UGI Co., Conestoga St.

1:30 p.m. — Southeastern DHIA Supervisors Conference, Stockerton
8:00 p.m. — 4-H Leaders Council meeting, Production Credit Bldg.

Friday, October 20
6:45 p.m. — Lancaster County 4-H Dairy Banquet, Plain and Fancy



NEPPCO POULTRY TOUR VISITS LANCASTER COUNTY. One hundred fifty-five poultrymen on four buses from five foreign countries as well as numerous representatives from all over the United States visited

Lancaster County Monday, as members of the NEPPCO poultry tour. In the photo above the tour made its first stop at the Cloisterdale Farm of L. M. Sheaffer, Ephrata.
L. F. Photo

HORNCO FEEDS - - - The Growing Choice of Business Farmers

More Steer Men Are Feeding Hornco Than Ever Before - - -

Hornco Beef
Supplements Are
Fortified With All
The Essential Ingredients
To Produce A Pound Of
Beef At The Least
Possible Cost.



From The Company With STEER FEEDING Know How



Ask your neighbor who feeds
HORNCO — Then call us for
details on our booking plan.

WE ARE NOW BOOKING

D. E. Horn & Co., Inc. York, Pa. Ph. 854-7867