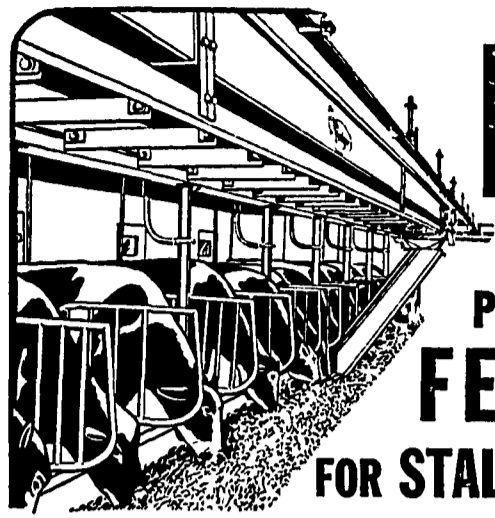


## For Full Market Reports Read LANCASTER FARMING



### NEW! SELF- PROPELLED FEEDER FOR STALL BARN

Feed your cattle mechanically — right in their stalls — with revolutionary new Badger Self-Propelled Feeder. Distributes chopped hay, silage, grain or mixed feeds evenly, quickly, quietly — the entire length of the manger. It's a Badger first — now available to you!

No feed separation — Badger's new Self-Propelled Feeder distributes all types of feeds evenly. No separation of fine and coarse feeds.

Versatile — New Badger principle lets you feed rations individually, mixed together or one over the other — the entire length of the manger.

Lower operating costs — Lower power input (only 1/2 to 1 hp) greatly reduces operating costs, maintenance needed.

Plan now to reduce your feeding costs, see us. Ask about convenient Badger financing.



Isaac W. Hurst  
Blue Ball

Arthur C. Heisey  
Jonestown, Pa.

R. M. Brubaker & Son  
Salunga

Grumelli Farm Service  
Quarryville



## John Deere 237 Corn Picker raises the speed limit in high-yield corn

Shift up! Pick at speeds up to 5 mph, even when yields run well over 100 bushels. Long tapered gatherers and high inside shield, funnel stalks right in. Even tangled stalks seldom escape three roller-type gathering chains. There's new gathering and snapping speed. And the 237's spiral snapping rolls cut shelling loss in half.

Faster elevators with higher flights move corn up fast. Trash goes too, aided by new rotating trash paddles. New husking rolls — cast-iron spirals against serrated rubber — peel husks, pull trash through. You pick clean. See the new 237 soon. Ask about the Credit Plan.

M. S. Yearsley & Sons  
West Chester 609-2990



Landis Bros. Inc.  
Lancaster 393-3906

A. B. C. Groff, Inc.  
New Holland 354-8001

Shotzberger's  
Elm 665-2141

Wenger Implement Co.  
Buck 284-4467

### ● Farm Women

(Continued from Page 11)

Manor Ridge, where a member, Mrs. Mervin Denlinger, is a guest. Crafts made by the guests will be shown and for sale.

SOCIETY #22

Mrs. Paul Miller was elected

president of Society of Farm Women #22 at the Society's monthly meeting Tuesday at 1 p.m. at the home of Mrs. Richard Forry, 2016 Horseshoe Rd., Lancaster.

Other officers elected are: Mrs. Lloyd Herr, vice presi-

dent; Mrs. Harry Shenk, secretary; Mrs. William Weller, corresponding secretary; and Mrs. Henry Hess, treasurer.

Co-hostess for the meeting was Mrs. Ralph Martin, who also led the devotions.

Mrs. Otto Stephens gave a program on interior decorating in the home.

Donations of \$10 each were given to the Needlework Guild and Lancaster Association for Retarded Children.

The Society will hold a rummage sale on Oct. 24 and 25 at the Malta Temple, Lancaster.

Also, the Society will have a demonstration table at the Homemakers Christmas program on Nov. 15.

Society 21 will entertain Society 22 on Oct. 19 at 6:30 p.m. at Quarryville Fire Hall.

The next meeting will be held Nov. 14 at 7:30 p.m. at the home of Mrs. John Neff, Mt. Joy R2.

### Society 6

The meeting of Society of Farm Women #6 was held in the home of Mrs. Bertha Keller, Elizabethtown R3, October 7, with Mrs. Charles Rife and Mrs. Martha Eshleman as co-hostesses.

Vice president, Mrs. Milton Eberly, was in charge and Mrs. Richard McMullen gave the devotions.

Election of officers was held. Mrs. Martha Eshleman was elected president. Serving with her are Mrs. Samuel Myer, vice president, Mrs. Eberly, treasurer, and Mrs. Charles Nissley, corresponding secretary.

A contribution of \$100 was made to the Lancaster Association of Retarded Children, and \$20 to the Mount Joy Needle Work Guild. Five members volunteered to fold Christmas Seals on Oct. 24 and cookies will be given to the USO on Saturday, Oct. 21.

Mrs. Walter Bomberger, Mannheim, displayed antique dishes and gave a talk about some of them. Thirty-six members and guests attended.

The Nov. 11 meeting will be held at the home of Mrs. Ray Hixon.

### RANGE OF POSSIBILITIES

Many nurseries stock several small flowering shrubs during the fall, says J. Robert Nuss, extension ornamental horticulturist at Penn State University. These can sometimes be used to replace difficult flower beds. If garden space is limited, summer and fall blooming varieties are available.

### Order Now For Fall Spreading



Ivan M. Martin, Inc.  
Blue Ball, Pa.

New Holland 354-2112  
Gap 442-4148

## PUBLIC SALE

BLACK AND WHITE  
HOLSTEIN FARM

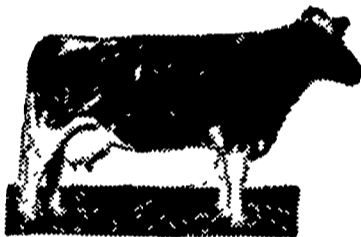
DAIRY COW SALE PAVILION

along Rt. 230 Bypass directly across from the  
Comet Outdoor Theatre, just west of Lancaster.

FRIDAY, OCT. 20, 1967

8:00 P.M.

We will have free bus service from the Intercourse Bank at 7:30 P.M. The black & white bus will stop anywhere along the old Phila. Pike. It will take you directly to our sale and return to Intercourse.



50 HEAD  
1 Load Purebred  
Canadian Cows  
1 Load  
Minnesota Cows

Fresh and Right Ready  
To Fresh.

2 years credit terms. Credit can be arranged prior to sale.

CHARLES C. MYERS, Owner

## PUBLIC SALE

Wednesday, Oct. 25, 1967

2:00 P.M.

44 ACRE FARM

More or less

On road leading from Hess' Church to Clay, 1/2 mile east of Brunnerville in Warwick Township.

6 ROOM

STONE HOUSE

with full bath

84 x 36 barn and tobacco shed with attached shed.  
Stalls for 22 cows.

8 x 40 cement stove silo.

Tile milk house.

32 x 32 hog pen and poultry house.

24 x 60 corn barn and implement shed.

Wash house and spring house.

2 water systems.

Buildings in good repair and land in high state of cultivation.

Elmer V. Good

Owner  
Route 1, Lititz, Pa.

Frank & Paul Snyder, Auctioneers.  
Owen Hershey, Attorney.

## Fertilizers For Fall Seeding

3-12-12

5-10-10

0-14-14

5-15-5

0-20-20

Available in Bags

Bulk or Spread

Call Us Today

Organic Plant  
Food Co.

GROFFTOWN RD., NEXT  
TO WATERWORKS

Ph. 392-4963 or 392-0374