

● Have You Heard?
(Continued from Page 15)

tritious as any other cut of beef.

A bluish-red color is usually a sign of freshly ground beef.

A certain glossiness is also characteristic for meat becomes

Citizens League

The Men's Christian Citizens League of Lancaster County is presenting a film "Verdict at 1:32", which dramatically docu-

ments the problems of the drunken driver. It will be shown at the West Willow EUB Church, West Willow, on Saturday, October 7 at 7:30 p.m.

Howard Wittle, a farmer from Lancaster R6, is chairman of the sponsoring committee.

● Farm Women
(Continued from Page 15)

Mrs. Richard Krider. Plans were made for members and their husbands to attend a hockey game Nov. 18. A new member, Mrs. Abe Mumma, was installed as a member of the Society.

Film Shows Dairy Farming To Be A \$50,000 Investment

"Milk and the Multitudes", a 20-minute color film, has been previewed by officials of the state Department of Agriculture.

The film shows that dairy farming is a complex business. It points out that \$50,000 is invested in the average dairy farm.

Another point stressed by the movie is that the dairy farmer, to be successful, must be a good business man.

Mr. and Mrs. Mowery Frey, Jr., a Lancaster County farming couple, are part of the movie's cast.

The movie, made possible by a grant from the Pennsylvania Fair Fund, was produced by Calvin-De Frenes Corp.

William H. Folwell, III, visual aids specialist from Pennsylvania State College, served as consultant during the movie making.

Prints of the film will be available after November 1.

LITITZ SOCIETY
The Golden Anniversary of the Lititz Society of Farm Women, marking the completion of a half century of activities, proved a big success Saturday when a total of 61 guests attended the dinner held at the local Church of the Brethren with Mrs. Roy Brubaker presiding.

Mistress of ceremonies was Mrs. Neil Clark. Mrs. W. D. Fyock led the singing and Mrs. Scott Garman had devotions.

Participating in the program was Mrs. Howard Erb, Miss Lyndia Ulrich and Mrs. Martin A. Moore. The Rev. Harry Richwine, Lutheran minister of Lebanon, was guest speaker. He talked on "Happiness."

Mrs. Raymond Newcomer and Mrs. Garman presided at the punch table. Daughters of members served the meal.

Guests were Mrs. Paul Whitman, Mount Joy, County president and 16 past presidents. They were each given a corsage.

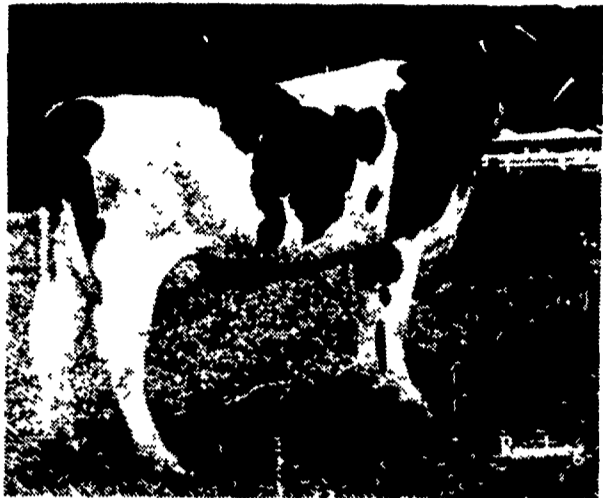
Decorations were in the Society colors of green, brown

and gold. A prize was given to Mrs. Paris Snyder Musser, who traveled the longest distance from Charleston, W. Va.

The next meeting will be held at the home of Mrs. Amos Shenk.

MORE FOR YOUR MONEY

IS A SERVICE TO:



SHADE MTN. KINGPIN LILA

WHIRLHILL KINGPIN

sire of

SHADE MTN. KINGPIN LILA

4-2 305 16,845 590

Owner: Jonas Kauffman
Lewistown, Pa.

USDA SIRE SUMMARY
MAY 1967

WHIRLHILL KINGPIN

866 dtrs., 361 herds 15,842 576
Pred. Diff. (rpt. 97%) +1,497 +53
Type: 140 Clsd. Pairs -.10 from Exp.

At NEBA we are dedicated to a program of developing and featuring A.I. proven sires. For this reason it has been our pleasure to watch the development of Kingpin who according to the latest USDA summary is the highest plus proven A.I. sire for milk in the United States. And Kingpin daughters not only milk well, but they also sell well. Several have topped or been near the top of recent sales.

What is 1,500 lbs. of milk worth to you?

For service to Kingpin or any other NEBA sire call one of our technicians serving Lancaster County.



R. D. #2, Tunkhannock, Pa. 18657
Telephone: 717-836-9811

They are:

NELSON KREIDER
717-687-6214

ROBERT KURTZ
717-626-8065

AT LAST

An Accurate and Dependable Proportioner and Much More

Healthway

OFFERS YOU A TRULY REVOLUTIONARY MACHINE AND METHOD FOR

Proportioning medications, vitamins, and other water additives Accurate at 1/10 oz. to 1 oz. per gal. — 1 to 250 G. P. H.

FOR POULTRY & LIVESTOCK

Exclusive Healthway Features

1. Made from costly stainless steel for life-time service
2. Proportions 1/10-1/5 or 1 oz. per gallon
3. Accurately proportions any water soluble additive
4. Water and medicine are thoroughly mixed by mechanical means
5. No hidden close fitting pistons to slow down or stop

HEALTHWAY ALSO OFFERS A STAINLESS STEEL WATERER OF REVOLUTIONARY DESIGN AND PERFORMANCE

WET FLOORS ELIMINATED

Healthway Waterers are universal in that they may be used for baby chicks, broilers or fully grown fowl! Because of the "magic of the circle" one Healthway Waterer has been found sufficient for 200 or more laying hens and easily replaces a six or eight foot trough in the brooder house.

Distributed by

HIESTAND, Inc.

Marietta R. D. 1

SEE US AT NEPPCO

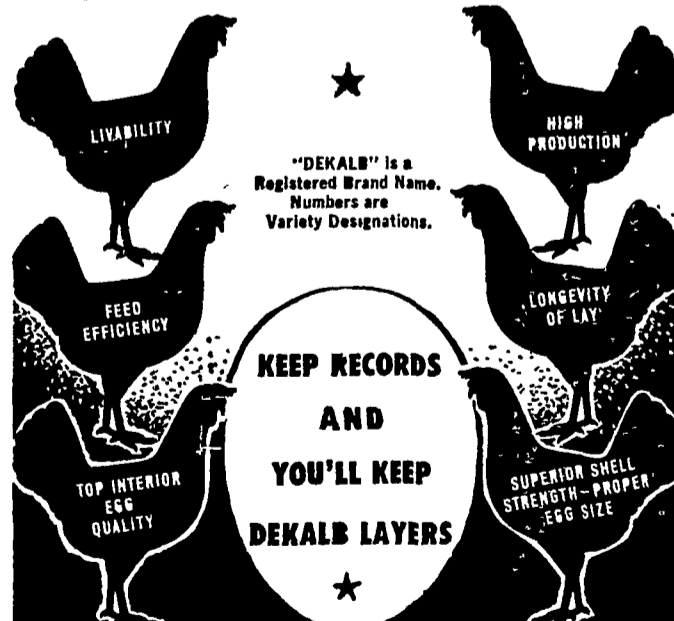
Ph. 426-1101

DEKALB PROFIT PULLETS

Balanced Bred for Balanced Performance



DeKalb Layers are BALANCED BRED for the SIX PROFIT FACTORS that make for success in your poultry operations—High Livability—Longevity of Lay—High Egg Production—Top Interior Egg Quality—High Feed Efficiency—Superior Shell Strength and Proper Egg Size.



Chix, Inc.

40 Donegal Springs Rd. Mt. Joy Phone 653-1102

DeKalb York Hatchery

P. O. Box 265 Hellam Ph. 255-7741

Sales & Service

Elmer Glick
Smoketown 768-3962

Lester B. Good
Ephrata 733-7671