

## Swine Producers To Conduct Fall Carcass Show

The Lancaster County Swine Producers Association will be conducting a Fall carcass show and on foot evaluation contest on Thursday, September 27, 1967 in conjunction with the Lampeter Fair.

Anyone who produces swine, either on a purebred or a crossbred program, is invited to participate by entering one of their hogs in this contest. The Kunzler Co. has asked that we limit the contest to

20 head. We will accept the first 20 entries and ask that no farm or herd make more than one entry.

All exhibitors in this carcass contest must be or become members of the Swine Association. Fee \$1.00.

Entries in the contest may be either barrow or gilt and must weigh between 190 and 220 pounds to be eligible to compete in this contest. Hogs not in this weight range will be slaughtered and evaluated with the contest entries and all exhibitors will receive a copy of the carcass data when this information is compiled.

The carcasses will be judged

by a University Meats Specialist on a basis of ham-loin percentage and meat quality, no certification requirements necessary. The Association will award trophies to the Champion and Reserve Champion carcasses and cash prizes of \$10 for first place and a \$1.00 depletion per placing on down to tenth place.

All pigs must be at the swine tent on the Lampeter Fairgrounds by 5:30 p.m. on Thursday, September 28, 1967. We will attempt to begin the on foot evaluation at 6:30 p.m. Consignors may watch the cutting and evaluation of the carcasses at the Kunzler Co. Time

of the evaluation will be announced at the on-foot show.

Any swine producer wishing to enter a pig in this carcass show should mail the \$1.00 entry fee to James Z. Martin, Christiana R1, by September 23. The show is not only for purebred breeders but is an opportunity for all swine breeders and feeders to gain greater "insight of the inside" of the swine they breed and to develop the ability of swine producers to choose meaty carcasses on the foot. The evaluation contest to judge the meatiness of the pigs

## Frost Holds The Key To A Record Corn Crop Yield

Frost holds the key to the quality and quantity of Pennsylvania's record breaking corn crop.

If there is no widespread frost for the next two or three weeks, Pennsylvania will have a bin-breaking, 80-million-bushel corn crop, the State Crop Reporting Service says.

Nearly two-thirds of the crop is in the soft stage and will require several more weeks of maturing to be safe from frost. Preliminary reports indicate the corn will be of excellent quality.

Field corn was damaged by frost in Somerset County earlier this month and some sweet corn was nipped in low lying areas in northern and western sections of the state.

The second week of excellent weather helped farmers get caught up on haymaking. Some farmers report they have filled their barns and have no place to store their extra hay.

Digging of fall varieties of potatoes is under way. The Lehigh County crop is good while in Potter County both the quality and yield are considered very good.

The peach harvest is nearing completion while apples continue to size and color nicely. Grapes are coloring rapidly in Erie County.

The bad part about making good is that you have to do it all over every day.

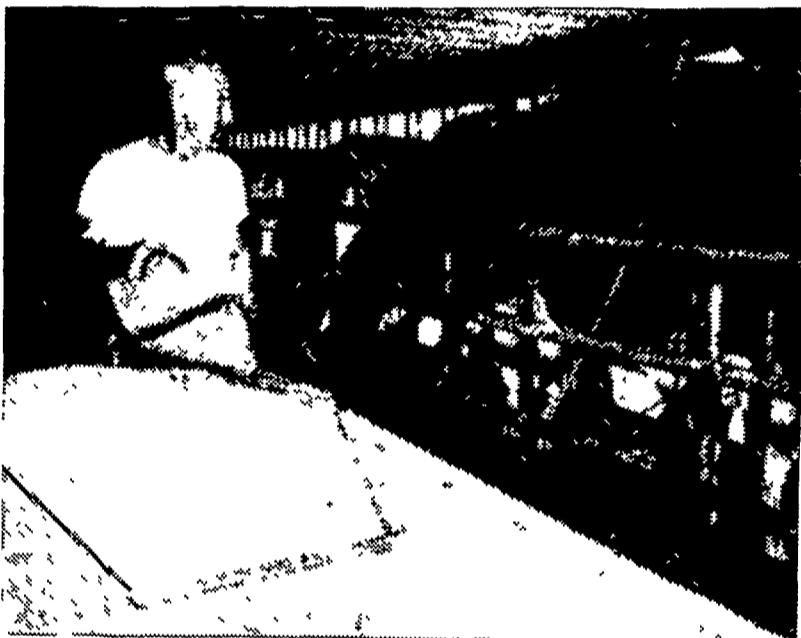
on foot will be open to everyone. Each participant's sheet will be scored against the official carcass data. Cash prizes of \$10.00, 7.50, 5.00 and 2.50 will be awarded the top four judges.

We hope to hear from you by the 23rd and see you on the 28th.

Sincerely Yours,  
JIM MARTIN,  
Secretary.

## HORNCO FEEDS - - - The Growing Choice of Business Farmers

# 19,602 lbs. of MILK 729 lbs. of FAT



Herman Stebbins, Farm Manager, feeding Hornco Uni-Pel 15 Flaked Dairy.

THIS IS THE 1966  
HERD AVERAGE (60 COWS) OF  
SINKING SPRINGS FARMS —  
YORK COUNTY, PENNA.  
AS REPORTED BY THE  
HOLSTEIN-FRIESIAN  
ASSOCIATION OF AMERICA.  
THIS RECORD ESTABLISHED  
SINKING SPRINGS FARM AS  
THE LEADING REGISTERED  
HOLSTEIN HERD FOR MILK  
PRODUCTION IN THE  
UNITED STATES, FOR HERDS  
OF 51 OR MORE  
LACTATIONS.

## MORE MILK - BETTER HERD HEALTH LESS BREEDING PROBLEMS

### THE REASONS MORE DAIRYMEN ARE FEEDING HORNCO UNI-PEL THAN EVER BEFORE!



**D. E. Horn & Co., Inc. York, Pa. Ph. 854-7867**

"SINKING SPRINGS FARM —  
THE HERD BRED TO PRODUCE  
AT A PROFIT"

Thank-you For Feeding  
Hornco Uni-Pel Dairy Feed  
Exclusively.

## Move Up To BIGGER GRAIN YIELDS

The day is long past when one seed is just like another. Today, profit-minded farmers realize that buying the highest quality seed is a long first step toward getting extra returns from every acre.

Look to Hoffman if you'd like to move up to bigger grain yields.

**A. H. HOFFMAN  
SEEDS, INC.**  
Landisville, Pa. 898-2261

**Hoffman**  
FARM SEEDS  
ALFALFA • CLOVER • PASTURE  
OATS • FUNK'S G-HYBRIDS