

• Have You Heard?

(Continued from Page 11)

sils because eggs cause quick discoloration of aluminum.

Clean Refrigerator Often in Warm Weather

Baking soda removes odors and freshens the interior of the refrigerator.

Cleaning is important whether you have a self-defrosting refrigerator or one you must defrost.

Use a solution of two table-spoons baking soda in two quarts warm water to wash interior walls, racks, traps, and compartments.

Sprinkle some dry baking soda on stubborn spots to help clean them.

For short-term storage of foods while you're cleaning the refrigerator, a covered cardboard box will give better protection than other types of containers.

Because your refrigerator is probably used more often in warm weather, you'll need to defrost and clean it often.

Know Cuts of Beef

It's important to know the place on the animal where cuts of meat come from. This determines how tender a cut may be.

More tender cuts come from areas that aren't exercised much. For example, meat from rib and loin sections is more tender than that from leg, neck, or shoulder.

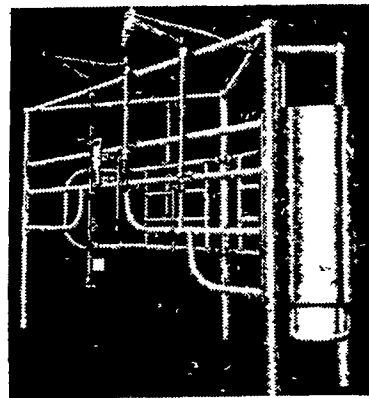
Sale Register

SAT. SEPT. 30 at 12 noon - Public Sale of Valuable Real Estate, Farm Machinery and Household Goods at Windsor Rl. Pa. Terms by Anna B. Bahm, Estate.

Something To Sell? Try a Classified Ad In Lancaster Farming

People who class themselves as big wheels are generally cracked cogs to everyone else.

NEW SYSTEMS FROM SURGE



New Stall Design With STAINLESS STEEL And Longer Lasting Finish

Feed Shields and Feed Boxes of heavy gauge stainless steel. All tubing has a NEW baked-on ACRYLIC-EPOXY finish for rugged use under damp, corrosive conditions.

A NEW Roller Randal for easier adjustment. Hinged control levers for operator safety and replaceable gate bearings make THIS Surge Stall RIGHT for any Parlor System.

B. Wilmer Martin
R. D. #1, Box 403A
East Earl, Pa.
Phone 215-445-5652

Ralph B. Zeager
223 S. Church St.
Quarryville, Pa.
Phone 717-786-7225

Public Sale

of Valuable

Farm Machinery HAY, STRAW & GRAIN

Friday, September 15, 1967
10:00 A.M. SHARP

At Buttonwood Farm, 7/10 mile South of Hellam, Pa., on Accomac Road. The undersigned executor of the Mahlon N. Haines estate will sell at public sale the following —

FARM MACHINERY

1960 Farmall tractor model 340, 1958 Farmall tractor model 450, two 1958 Farmall tractors model 350, H Farmall tractor, McDeering model H91 combine, McDeering Harvester model #20C equipped with 48 H.P. unit, 2 McDeering MH corn pickers, McDeering grain drill, 4 sets of tractor cultivators, International Baler 37 P.T.O., 9 ft. spring harrow, 2 three section spring harrows, two 10 ft. spring harrows, case pick-up attachment for combine, Owatanna portable hammermill and mixer P.T.O. model No. 95, No. 10 sixteen disc drill with power lift, McDeering 16 ft. rubber tire wagon, David Bradley 16 ft. rubber tire wagon, Coby 14 ft. rubber tire wagon, Studebaker 16 ft. rubber tire wagon, 14 ft. homemade rubber tire wagon, 1961 Int. 3/4 ton pick-up truck, 1952 F-6 Ford truck, New Holland grain elevator, manure loader, dirt scoop and snow bucket, Harvest handler elevator, power sprayer, 2 McDeering mowers, 3 New Idea manure spreaders, two 10 ft. cultipackers, two 8 ft. cultipackers, 20 heavy duty disc harrow, two 18 x 32 disc harrows, three 18 x 28 disc harrows, 3 model No. 211 plows, Model No. 311 plow, 4 garden tractors, McDeering manure spreader, case grass mower, McDeering D V25 grass mower, McDeering side delivery rake, McDeering hay conditioner, John Deere hay fluffer, Speedy stalk cutter, hay tedder, potato plow, 3 horse plows, grass seed drill, tractor grass seeder, lime drill, New Holland corn sheller, Papec 8" hammermill, silo blower, Danauser post hole digger, Papec 13" hammermill, elevator drag, Ontario grain drill, 2 McCullough chain saws 20" and 42", 2 platform scales, circle saw, potato planter, DeWalt saw, skill saw, 36 and 38 ft. extension ladders, wheelbarrow, 4 pr. tractor chains, several rolls of wire, 350 gal. tank, brooder stove, bag truck, steel drums, hand cider press, old water wheel, several loads of small items consisting of log chains, grain bags, clover seed sower, digging irons, rakes, shovels, grease guns, cables, various belts, new tractor parts, bolts, nuts and many other small items used around a large farm.

FEED

Approximately 70 tons of clover and timothy hay of 1967
Approximately 15 tons of wheat straw of 1967
Approximately 90 tons of good ear corn

LIVESTOCK

1 Holstein milk cow due to freshen February 1
1 Guernsey milk cow — was recently fresh
1 Spotted Poland and China boar hog
4 brood sows — 3 are bred and due in early fall
40 shoats of various sizes
NOTE: Farmers, if you are in need of good clean machinery, be sure and attend this sale. Most of the above listed farm machinery is late model and in A-1 condition. Lots to sell — come early. Inspection of farm machinery day before sale.

Not responsible for accidents on day of sale.
Lunch available on the premises.

Terms: Cash

MAHLON N. HAINES Estate
York Bank & Trust Co.
Executor

JACOB A. GILBERT, Auctioneer
GILBERT & FREY, Clerks
LAUCKS & MONROE, Attorneys

PUBLIC AUCTION

FRESH AND SPRINGING YOUNG COWS AND FIRST CALF HEIFERS REGISTERED AND GRADE

60 - HEAD - 60

Sale to be held in the dairy barn arena at the Aberdeen Sales Company located on Md. Rt. 22, 6 mi. east of Bel Air, Md. and 6 mi. west of Aberdeen, Md., in Churchville, Harford Co., Md., on

FRIDAY, SEPT. 8, 1967
Night Sale 8:00 P.M. EDST

The majority of cattle offered for sale will be fresh or close springing. Some cows will have D.H.I.A records of up to 6000 lbs. of milk, 5% fat.

The balance of cattle are due in October and November.

All cattle are T.B. Accredited and Certified Bangs Free. Test within 30 days of sale.

MANAGERS NOTE: This is a fine group of cattle. If you need additional cows for average months, attend this sale.

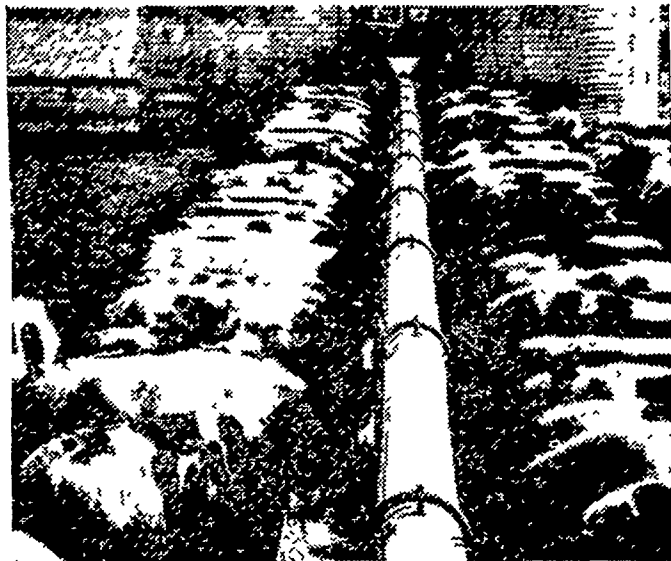
For consignments or information, call: 734-6050 or 734-7105.

TERMS CASH

ABERDEEN SALES CO.
Sale Managers

Dairy sale held 2nd Friday of each month.

FEED CATTLE FASTER AND MORE EFFICIENTLY THAN EVER BEFORE!



NOW! Feed up to 200' of bunk per drive . . . Feed multiple lots . . . Blend complete rations with . . .

VAN DALE'S NEW AUTOMATIC MULTI-FEEDERS

From the pioneer in silo unloading, come two low-power, mammoth capacity, bunk feeders for in-the-barn or feedlot feeding. You can feed from more than one silo (at the same time). Feed out to from one to four-or-more lots. Feed any material with big 9" or 12" true, bearing-suspended augers, (no metal-to-metal contact.) Feed entire bunk at one time; eliminate crowding.

High capacity and dependability . . . call us and we'll come out to see you, at your convenience.

CALEB M. WENGER

R. D. 1, Drumore Center 548-2116 QUARRYVILLE, PA.

Get Your Fall Milk Supply At The . . .

PENNSYLVANIA STATE SALE

Harrisburg, Pennsylvania — September, 13, 1967

Held in conjunction with the Pennsylvania All-American Dairy Show

One of the many features of the sale will be a daughter of —

ROLLING ACRES GOLD BAR PATTY
VG-89%, Ton of Gold, Tested Dam on 3 daus. avg. 10,606 — 504.

8-4	365	20,360	794	2x
9-6	365	20,359	830	2x

Her daughter selling:
ROLLING ACRES EMPIRE PATTY JEAN

By Jeanies Empire, son of Regent Basil Jeanie, winner of 1959 All American Milking Derby, 4 recs. over 1,000 lbs. fat (HIR and DHIA).

Consignor: Robert H. Eick, Columbia Cross Roads, Pa.

THE MILK SALE

— 45 HEAD —

Most are due within two weeks of the sale.

Many outstanding consignments from out of state herds including Marlu Farm, Pioneer Farm, Vaucuse Farm, Tymor Farm and Twin Elms Farm.

LOTS OF MILK

Auctioneer: S. Braden King
Boonsboro, Maryland

Request catalogs from

JERSEY SERVICE, BOB LORD

Klondike Road, Dudley, Massachusetts

Phone (AC 617) 943-4635