

AGRICULTURAL AND  
BIOLOGICAL SCIENCES LIBRARY  
AUG 21 1967  
Pennsylvania State University

# Lancaster Farming

VOL. 12 NO. 38

Lancaster Farming, Saturday, August 19, 1967

\$2 Per Year

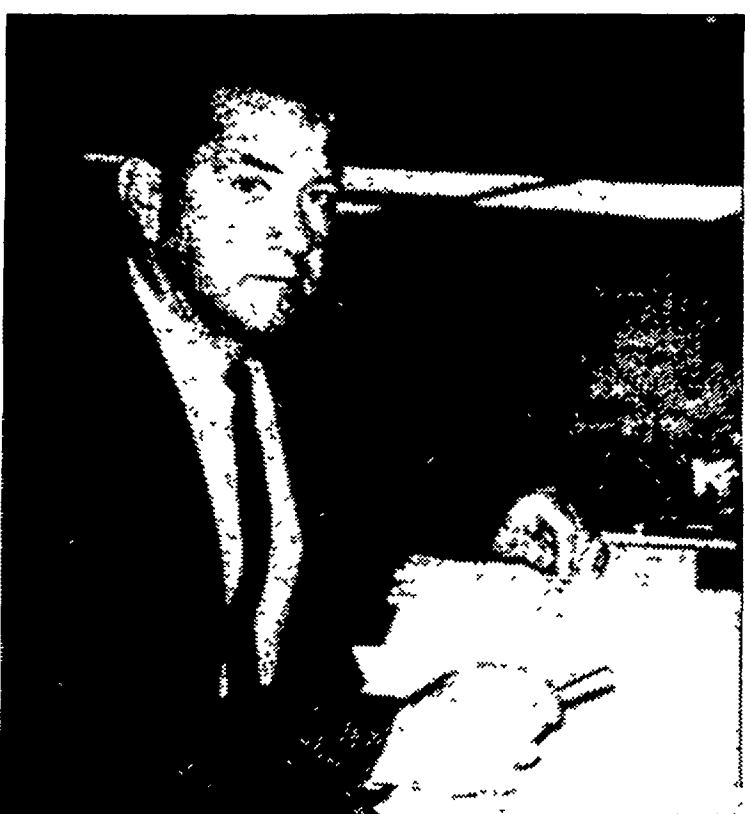
## County 4-H Pig Show Aug. 22nd

It's County 4-H Pig Show & Sale time again, according to a reminder issued by associate county agent Victor Plastow this week.

The event will again be held at the Lancaster Stock Yards, and the Lancaster Livestock Exchange will handle the sale beginning at 1:30 in the afternoon. Judging of entries will begin on Tuesday, August 22nd, at 8 a.m., Plastow notes. The animals will be type judged by breeds, with three weight classes considered in each breed.

The weight classes will be: lightweight, 190 pounds and under; mediumweight, 195-220 pounds; heavy weight, 225 pounds and up. Club members are eligible to show only one pig in each weight class, Plastow advises, but each may show in as many weight classes and breeds as he has pigs.

At last year's show, grand championship honors went to Franklin Ruoss of Ephrata R2 for his Duroc-Jersey barrow. The animal was later sold to Kunzler & Co, Inc., Lancaster. (Continued on Page 8)



HENRY E. GIVLER will soon be leaving this desk he has held down for the past dozen years as vocational agriculture teacher at Pequea Valley High School. He will be moving into the job of director of vocational agriculture for the Lancaster-York area, working out of the county office of the superintendent of schools.

## Area Vo-Ag Directorship To County Agr. Teacher

As soon as a replacement can be found to fill Henry E. Givler's present teaching position, he will become the new Lancaster-York area director of vocational agriculture, it was announced this week by Dr. Harry Gerlach, Lancaster County Superintendent of Schools.

Givler will fill the post vacated last December 31st by T. M. Malin of York. Malin retired at that time, ending a 41-year career in agriculture and education. The position has been unfilled since his retirement.

A two-year veteran of World War II, during which he served as a radio operator with the U.S. Navy, Givler attended Penn State University following the war, majoring in agricultural education.

For the past 15 years, Givler has been teaching vocational agriculture. He started that department at Red Lion in 1952, then came to Pequea Valley High School to do the same thing in 1955.

Looking back on his 12-year teaching career at Pequea Valley, Givler notes he has graduated approximately 100 boys from that vo-ag department. Two of these, John Eby, Jr and Roy Mentzer, went on to win the highest national Future Farmer award available — the American Farmer Degree.

Raised on a dairy farm in southern Lancaster County, Givler's main agriculture interest

is still dairying. His depth of experience in that field is reflected in the performance of his students over the years, both in dairy showing and judging competition, and in the career choices of Pequea graduates.

The Lancaster-York area which Givler will be supervising is probably the state's largest. It consists of 18 vo-ag chapters — nine in each county — with approximately 300 boys in York County and 400 in Lancaster.

Until the Lancaster County Farm and Home Center is completed next year, Givler will (Continued on Page 4)

## Consv. Directors Study Field Day Activities

Directors of the Lancaster County Soil & Water Conservation District Monday night reviewed results of last month's conservation field day and county plowing match.

Disappointment was expressed that only three plowmen had turned out for the annual event, and suggestions for increasing this number next year were offered.

J. Everett Kreider, director from the Quarryville area, noted he would like to see next year's plowing contest held "somewhere south of Willow" (Continued on Page 6)

## County Poultry Dealer Introduces New Cart For Carrying Cage Birds

Veteran Lancaster County live poultry dealer Carl B. Risser of Lititz recently applied for a patent on a chicken carrying cart designed especially for modern cage layer houses.

Risser, who has been in the poultry handling business for nearly 40 years, designed this new cart to save time and labor in cleaning old hens out of narrow-row cage houses, or for putting new pullets in. During the peak of the season he handles up to 40,000 birds a week, and has found the cart speeds his work considerably.

"Previously," he notes, "we had to have men carrying handfuls of chickens up to 400-500 feet to crates, and then carry crates to the truck."

Now Risser uses a 14-man crew — counting those on the truck — and carts the birds directly to the truck in lots of 400-500, depending upon the size of the birds and the weather conditions. He keeps four carts operating so that there is no waiting for an empty cart to return.

### CHICKEN WALL

When a cart is fully loaded it resembles an almost solid wall of chickens. The birds are hung on hooks by the legs, and the hooks are spaced either side of eight upright posts which comprise the cart's framework. The eighth upright is a modification of the original design which carried only seven. Risser gained the eighth upright by adding a support piece to the rear of the cart at about a 45 degree angle, and anchoring the upright to it.

The all-metal cart is mounted on six rubber-tired wheels. Two of these are of large diameter, and located in the center of the frame. The other (Continued on Page 8)

## District 4-H Dairy Show Set Aug. 25th

Associate county agent Victor Plastow issued some instructions to 4-H'ers this week who will be participating in the district dairy show to be held at Hershey on Friday, August 25th.

The show will begin at 9 a.m., Plastow notes, with Jersey, Ayrshire, and Guernsey animals performing in Ring 1. At the same time in Ring 2, Brown Swiss, Holstein, and Milking Shorthorns will be featured.

No entries will be released before 2 p.m., Friday, Plastow advises, adding that animals are slated to arrive at Hershey between the hours of 9 a.m. and 5:30 p.m. on Thursday.

(Continued on Page 4)

## Cornerstone Rite Marks County Farm and Home Center Progress

A ceremony set for yesterday at 3:30 p.m. marked a milestone in the progress toward completion of the Lancaster County Farm & Home Center.

A delegation of Farm & Home directors, staunch supporters, and local dignitaries were on hand at the Center's site along the Route 30 bypass for a cornerstone-laying ceremony Friday. The one-third completed building is scheduled for opening January first of next year and will be Pennsylvania's first such Center.

The program included talks by three officials who have been long-time friends of the Farm & Home Center concept: Mayor of Lancaster Thomas J. Monaghan; County Commissioner chairman Benjamin Weaver;

and State Senator Richard A. Snyder.

### L. F. PRESERVED

One of the objects placed into the cornerstone for preservation was a July 29, 1967 copy of Lancaster Farming, which featured an editorial urging support for the Farm & Home Center. Other objects included in the preservation were copies of all of the Farm & Home brochures listing directors and officers for the various campaigns; a statement by Levi H. Brubaker reviewing development and goals of Farm & Home; and a copy of the local paper.

Building committee chairman Jacob Kurtz, Jr. laid the cornerstone (Continued on Page 7)



FARM & HOME DONATION — Representing the Northern Lancaster County 4-H Conservation Club, vice president Dennis Martin of Stevens R1 presents a check for \$25 to noted conservationist Amos H. Funk in support of the Lancaster County Farm & Home Center fund drive. Funk is a director in Farm & Home, and is one of five area chairmen serving in the fund drive. Several other county 4-H clubs followed suit with donations presented to Levi H. Brubaker Thursday evening at the 4-H Achievement Days program. L. F. Photo

## Farm Calendar

- August 21-1 p.m., Southeast District FFA Dairy Show at Hershey.
- August 22-8 a.m., County 4-H Pig Show and Sale at Lancaster Stock Yards; sale begins 1 p.m.
- Regional 4-H Dress Revue at Strawbridge & Clothier auditorium, Philadelphia.
- August 25-9 a.m., Southeast District 4-H Dairy Show at Hershey.
- August 26-State Poultry Queen Contest at Hershey in conjunction with Pennsylvania Dutch Days.