

PIMCO Directors Hear Exposition Progress

The board of directors of the Poultry Industry Manufacturers' Council (PIMCO), sponsors of the 1968 International Poultry Industry Exposition (IPIE),

met recently to hear a progress report of the Exposition committee. The Exposition will be held in September, 1968 at the International Amphitheatre, Chicago. Advanced sales of exhibit space were reported at a new

high. Twelve more companies have selected prime exhibit space. It was noted that all segments of the industry are now represented in the 1968 Exposition — manufacturers of incubators, buildings, building materials, poultry equipment, egg processing and handling equipment, broiler and turkey processing equipment, materials handling equipment, poultry feeds, pharmaceuticals and biologicals, poultry breeders and the poultry press.

The 1968 IPIE floor plan and descriptive brochure were reviewed, and plans made to mail these to the industry in the near future.

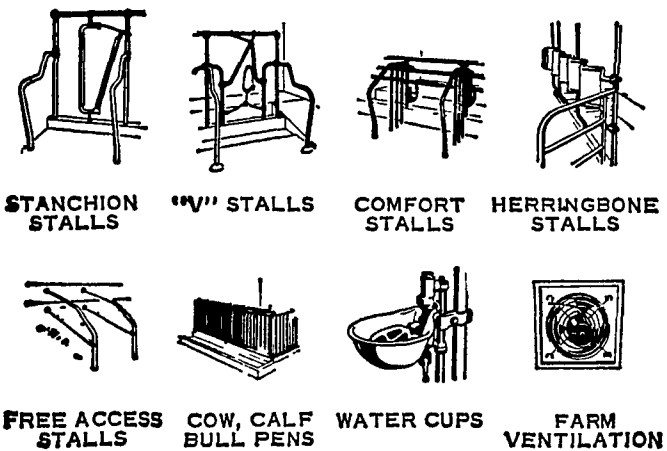
Some people thunder through life just like a pint of water going over Niagara Falls.

● Lancaster Auction
(Continued from Page 2)
FEDER STEERS — Good and Choice 950-1075 lbs. 25 10-26 10.
CALVES 127 — Standard to Choice vealers \$1-2 higher, Cull and Utility steady.
VEALERS — Choice 39 41.50, few 42 44; Good 36-40, Standard 33-37; Utility 32-35, Cull 26-32.
SLAUGHTER CALVES — Choice 250-330 lbs. 31 50-30, Good 27-32, Standard 24 50-29
HOGS 308 — Barrows and gilts steady to 25c lower US 1-2 185-235 lbs 23-23 50, US 1-3 185-240 lbs 22 25-23; US 2 3 215-240 lbs. 21 60-22 10; US 2 3 255-260 lbs. 20 60.
SOWS — US 1-2 440-555 lbs

16.10-16 60; US 2-3 500-675 lbs. 14 60-15 10.
SHEEP 14 — Couple lots Good 90-95 lbs steady at 23 50-23.75

YOU'VE GOT TO HAVE A SYSTEM — GO JAMESWAY POWER CHORING

BIG J BARN EQUIPMENT



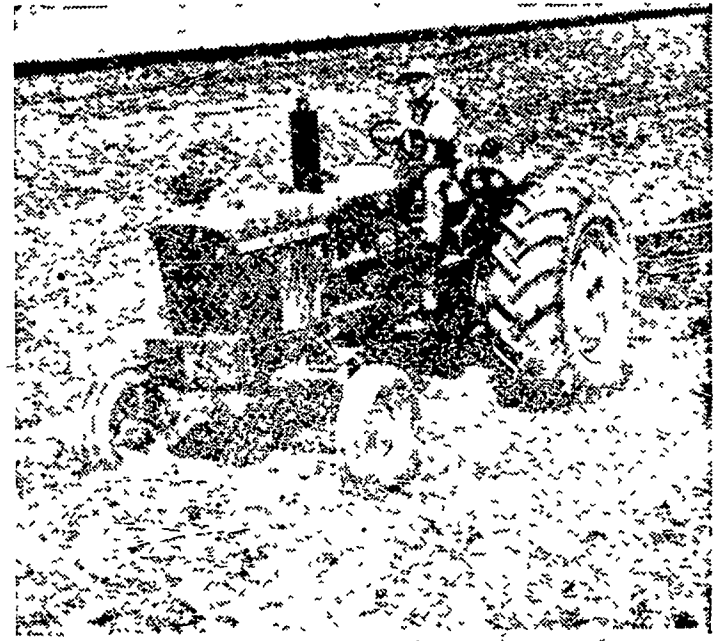
everything for your barn

Jamesway's complete line of quality barn equipment is available in hot-dip galvanized or painted finish. We can help you plan the most modern installation and meet your needs exactly. What's more, Jamesway equipment is easy to install, built so strong it will last as long as your barn stands. Come in today for planning help.

JAMESWAY M. E. SNAVELY
445 South Cedar St., Lititz, Pa. 17543
Ph. 626-8144

NEXT SPRING'S NEW TRACTOR

(it might as well be yours NOW)



HERE'S WHY

Now, you can buy a John Deere Tractor — any model, any tractor-implement combination — with a small percentage down . . . no finance charge, no payments to make until March 1, 1968. That's the John Deere Credit Waiver-of-Finance Plan; it's in effect right now.



Wenger Implement Co.
Buck 284-4467

A. B. C. Groff, Inc. New Holland 354-8001
M. S. Yearsley & Sons West Chester 609-2990

Shotzberger's Elm 665-2141
Landis Bros. Inc. Lancaster 393-2906

WHY PAY MORE FOR LESS?

SILAGE ENRICHER

"ALGIT"

A PRODUCT OF THE SEA

Use 5 lbs. Algit to each ton of silage.

1. This prevents "Run Off". (of juices)
2. Keep the silage fresh.
3. Eliminate that certain odor from silage.
4. Increase the nutritional value of silage.
5. Cattle prefer Algit treated silage.
6. The smell which your clothes get in wintertime is eliminated.

Spread on top of load by hand before unloading.

For additional information contact:

ZOOK & RANCK, Inc.

GAP R. D. #1, PA. 17527
Telephone: 717 442-4171

STOP

Carrying Milk

Devote YOUR time and energy to doing a BETTER, FASTER and CLEANER job of cow milking. Give MORE attention to your cows by wasting LESS time lugging milk . . .

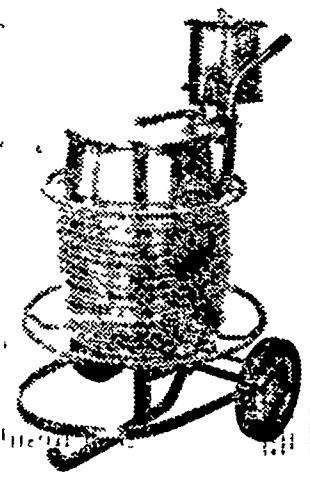
GET A NEW

SURGE

BUCKETEER

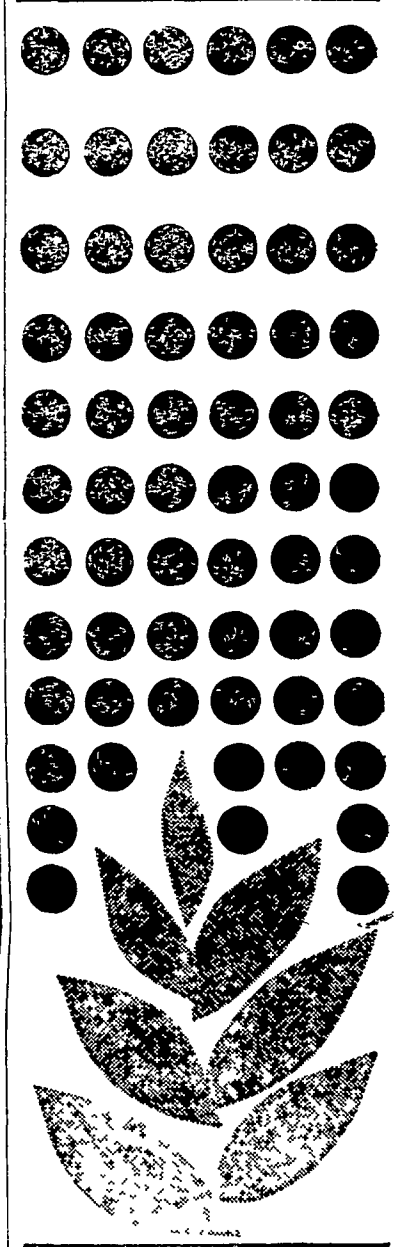
MILK TRANSFER SYSTEM

Completely self contained, stainless steel portable unit with Releaser rack for in place cleaning and automatic hot air drying. As easy to operate as stepping on a pedal. Carries your wash pails and lets you weigh for production records. THREE Models, each with 100 feet self-storing transparent tubing. A choice to best fit your budget and needs.



B. Wilmer Martin
R. D. #1, Box 403A
East Earl, Pa.
Phone 215-445-5652

Ralph B. Zeager
223 S. Church St.
Quarryville, Pa.
Phone 717-786-7225



PENAR
controls tobacco suckers on contact within 45 minutes

- 1. Costs as little as \$5.00 per acre
- 2. Requires only one application
- 3. Produces more high value tobacco per acre
- 4. Doesn't affect leaf or plant growth

For a folder on details, write:

PENNSALT

3 Penn Center, Phila., Pa. 19102
309 Graham Bldg., Aurora, Ill. 60504

PENAR

Available now at
P. L. ROHRER & BRO.
SMOKETOWN, PA.
Ph. 397-3539