

# Lancaster Farming

VOL. 12 NO. 34

Lancaster Farming, Saturday, July 22, 1967

\$2 Per Year

## County 4-H Demonstrators Capture 7 Blue Ribbons at Regional Contest

Nine Lancaster County youngsters entered the Pennsylvania Southeast Regional 4-H Day demonstration competition held Tuesday at the Owen J. Roberts High School in Chester County. Seven of them came home with blue ribbons.

Six of the seven blues represented first-place wins, five in agricultural projects and one in home economics. These winners will compete in state competition August 7-9. Other ribbons won included one each of red and white.

In the general agriculture category, Averill Royer of 2025 Oregon Pike topped entries from the other 12 southeastern Pennsylvania counties in the region with her demonstration on "How to Give a Demonstration".

Ann Nissley, Mount Joy R1, and Audrey Yunginger, Marietta R1, teamed up to win the

livestock conservation category with a demonstration titled "Protect Livestock — Use Pesticides Safely".

In the livestock demonstration category, another county team won with the subject "Corn Silage Is King". They were Dale Bushong, Columbia R2, and Marvin Nissley, Mount Joy R1.

Two other county demonstrators won in the entomology and handyman categories. They were Hugh Wenger, Quarryville R2, and Dale Shenk of Lititz R3. Their subjects were, respectively, "Mounting of Adult Insects" and "Common Wood Joints".

In the home economics division the county's one winner was Kaye Smith, Ephrata R2, for her clothing construction demonstration titled "A Pressing Need". Betty Barley, Millersburg R1, teamed up to win the

(Continued on Page 8)

## Brucellosis Licked By 1971 Is Pa. Goal

HARRISBURG — State Agriculture Secretary Leland H. Bull today announced changes in brucellosis control regulations aimed at stamping out the disease in Pennsylvania by 1971.

Brucellosis is a disease of livestock that causes contagious and infectious abortion in cattle. It also is the cause of undulant fever in human beings, a serious disease that can be transmitted from infected animals.

Pennsylvania began a campaign in 1936 to rid the state of brucellosis. Control programs carried out since then have reduced the incidence of the disease in cattle to less than one-tenth of one percent, Bull said.

(Continued on Page 5)

## Irwin Joins County Extension Staff



Jay W. Irwin

Jay W. Irwin joined the Lancaster County extension staff as assistant county agent this week, filling the vacancy created when Winthrop Merriam resigned that post in June.

Irwin is a native of Blair County. His wife, the former Betty Wilson of Centre Hall, and their six children, presently reside in Latrobe. The family expects to move to Lancaster County in the near future.

Irwin graduated from Penn State University in 1949 with a major in agricultural economics. Following college, he served two years as a veterans' agricultural training supervisor, then for the next 15 years was manager of Farm Bureau Cooperatives in Indiana, Venango, and Westmoreland counties. For the past two years he was employed as unit manager

(Continued on Page 8)

## County Barley Harvest Winds Up; Wheat Approaches 40 percent Cut

A check with several grain elevator operators late Thursday suggested that this year's barley harvest is just about wound up. "We see an occasional truckload on the road, but for all practical purposes it's finished," one operator reported.

Wheat, reported "tough" last week, is little better this week, although test weights are reported improved at 58-58.5 pounds per bushel.

With some rain reported nearly every day last week, and precipitation totaling more than two inches, not much of the crop was cut. Although actual rain avoided the county most of this week, humidity and lower overnight temperatures slowed drying. Moisture measurements on wheat received at grain elevators during the week ranged 14.5 to 15.5%. At any level above 13.5 most wheat must be artificially dried before storage.

"ONE GOOD DAY"

"If we get one good drying

day you'll really see some wheat movement in the county," one operator predicted. He estimated the amount of wheat cut in Lancaster County at about 40%, but noted there may be as much as 80 percent still standing in some other areas of the east where weather hasn't been as "good" as it has locally.

Weather permitting, all estimates were that the county's wheat harvest would be pretty well wrapped up by the end of next week.

## Consv. Field Day & Plow Contest Details Set

Final details for next Tuesday's annual plowing contest and conservation field day were announced yesterday by Aaron Z. Stauffer, Lancaster County Soil and Water Conservation District director.

With the weather-delayed wheat harvest, there was some doubt that the 12-acre grain field on the Edwin Kurtz farm at Ephrata R1 would be ready for the bite of contestants' plows. But Stauffer reports most of the wheat is cut, and baling of straw is underway. The field will be ready for Soil Conservation Service technicians.

(Continued on Page 8)

## NEPPCO Co-Op Division Supports S.109 And Ex. Large Egg Quotes

The NEPPCO Division of Cooperatives, meeting recently on Cedar Point near Sandusky, Ohio, voted to support "The Agricultural Producers Marketing Act of 1967" (S.109 and some 40 similar bills in the U.S. House of Representatives).

The Division thus becomes the first poultry organization to openly support the bill which is intended to protect producers from discrimination leveled against them by handlers because they are members of a bargaining or marketing cooperative. The bill is strongly supported by the four big na-

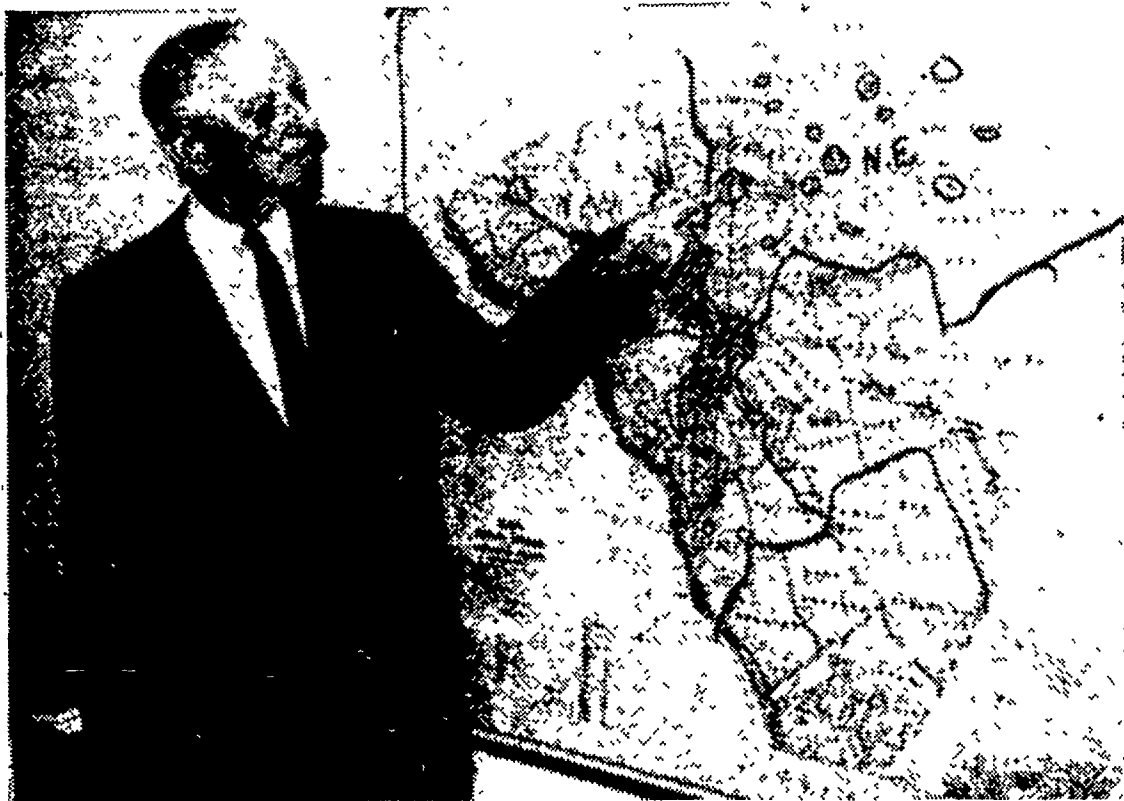
tional farm organizations and the U.S. Department of Agriculture. It is opposed by the National Broiler Council, the Institute of American Poultry Industries, Southeastern Poultry & Egg Association and several southern state poultry associations.

EX-LG. FAVORED

In other action, the Division also went on record as favoring the establishment of an "Extra Large" egg price quotation. Last fall, the Urner Barry Company, publishers of "Producers Price - Current",

(Continued on Page 9)

## Farm & Home Campaign Kick-off Date July 31st.



CAMPAIGN DIRECTOR F. Bailey explains how the county has been divided into five large areas for the fund drive which will be launched

August 2nd. The goal of the Farm & Home Foundation drive will be \$100,000, which, it is anticipated, will deliver the new Center debt-free. L.F.Photo.

## Meetings Set For Strasburg And Lititz

Directors of the Lancaster County Farm and Home Foundation met Tuesday evening at the temporary headquarters in the Agway building on Diller-ville Rd., to map final plans for launching a \$100,000 fund drive. It will be a three-week effort with the goal of collecting sufficient contributions to enable the board to turn the new Farm and Home Center over to Lancaster countians debt-free.

Former assistant superintendent of schools Fuhman F. Bailey, who was hired for an eight-week period to run the campaign, briefed the board members on actions taken and results so far.

He explained that the county had been divided into five areas, each with a chairman. Then, each area was subdivided among district chairmen who will work with volunteer solicitors in their districts.

"The cry of the hour is for more district chairmen," Bailey

(Continued on Page 16)

## Farm Calendar

July 23—Farm Women No. 26, annual picnic at Sico Park, Mount Joy.

—Lancaster Pony Club, at Drumore.

July 24—7 p.m., York County Poultry Assn. annual banquet and queen pageant, at the Winterstown Fire Hall.  
—Fulton Grange annual picnic at the Grange Hall, Oak-ryn.

July 25-10 a.m. Lancaster Co. Plowing Contest and Conservation Field Day, at the farms of Edwin Kurtz and Louis Hurst, both Ephrata R1.

July 26-10:45 a.m., Lancaster County Holstein Assn. field day and judging contest at Amos Rutt farm, Quarryville R2.

July 27-6:30 p.m., County (Continued on Page 14)