

Poultry And Egg Price Margin Study Shows Grade A Eggs Best

A report on monthly price and price spreads for eggs and poultry in 12 selected cities over the past five years was published recently by the U. S. Department of Agriculture.

The report, by the Economic Research Service, is a compilation of reports and data supplied by state and federal agencies and private firms, on farm and retail prices and price spreads of seven classes of eggs, frying chickens, and turkeys. The report covers Boston, New York, Washington, Baltimore, Atlanta, Cleveland, Chicago, St. Louis, Denver, Los Angeles, San Francisco, and Seattle.

In 1961-66, the highest average share of the retail price went to producers of large grade A eggs, at 58 percent, followed by turkey producers, at 57 percent. Broiler producers received an average of one-half of the retail price, according to the report.

In general, price spreads for all the reported classes of eggs and poultry were relatively

stable during 1961-66, but margins for the different classes varied from city to city depending on pricing policies, location of sources, and directness of marketing, the report says.

Farm-to-retail price spreads were fairly consistent for medium-sized turkeys in all the cities. Spreads for large eggs were lower along the West Coast than the East Coast. Spreads for frying chickens were lowest for the Eastern cities of Atlanta, Baltimore, and Washington, according to the report.

● 4-H Queens

(Continued from Page 1)

dent Mike Smucker, Ephrata R2. On a busy schedule these days, Smucker had returned late that afternoon from the Summer Institute of the Pennsylvania Assn. of Farmer Cooperatives at Lock Haven. He was one of 170 Pennsylvania young people attending the session and served as leader

walk away
manure odor
& flies with
radiant
granules
from...



One pound of Radiant Granules eliminates odors and flies in a 40' x 400' poultry house. Absolutely harmless to chickens, Radiant Granules makes short work in eliminating (not covering up) odors and killing flies in poultry houses, manure pits, garbage cans or any area where flies breed.

Anderson Box Co.	Radiant Granules
P O Box 31157, Indianapolis, Ind	6705
<input type="checkbox"/> Send 22 95 for 25 lbs and whirlybird F O B.	
<input type="checkbox"/> Send literature	
Name _____	
Address _____	
City _____	
State _____	



MIKE SMUCKER, Ephrata R2, on his way to register at the Summer Institute of the Pennsylvania Assn. of Farmer Cooperatives at Lock Haven this week.

for one of the discussion groups.

"I haven't even been home since last Sunday," Smucker quipped as he hurried back to the microphone to announce the next event at the Long Park contest.

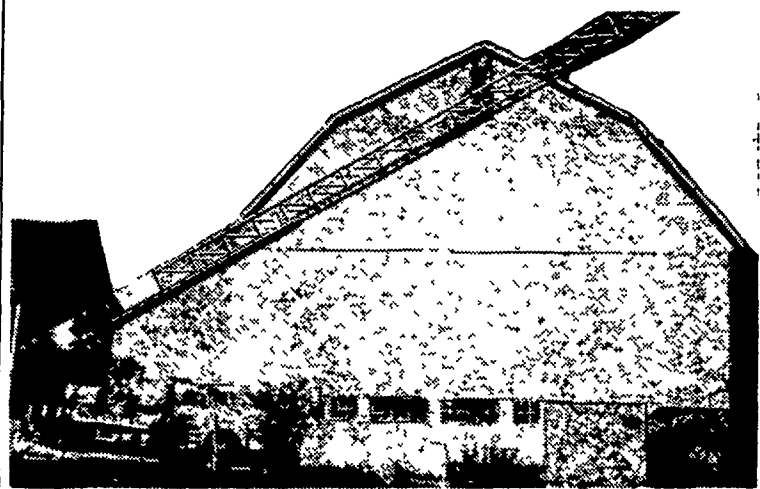
Judges for the queen contest this year were two high school teachers—Robert Schappell and Mrs. Chester Lowe—and the 1966 Miss New Holland titleholder Mary K. Zimmerman.

Selection of the queens was based on personality (30%); appearance (30%); poise (20%); and posture (20%).



TOM HOUSER, Lampeter, acts as a leader for one of the discussion groups participating in the Summer Institute of the Pennsylvania Assn. of Farmer Cooperatives held this week at Lock Haven.

WE USE QUALITY PAINT
AND IT DOES STAY ON!!!



Aerial Ladder Equipment Used
To Paint Your Farm Buildings

For Complete Information and Prices Contact

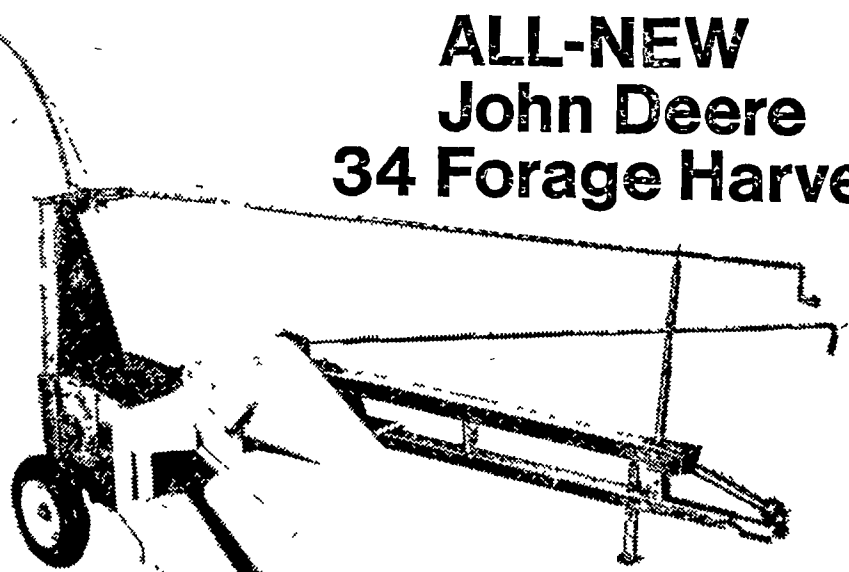
C. RALPH MILLER

Spray-on and Brush-in Painter

R. D. 4, Manheim, Pa.

Ph. 665-3388

ALL-NEW John Deere 34 Forage Harvester



This low-cost silage-maker
is new from the ground up

New cylinder cutterhead. New, exclusive pivoting feeding mechanism. New knife sharpener that's second to none. New row-crop units with exclusive rubber gathering belts for positive feeding. New windrow pickup and mower-bar units. New strength, simplicity, and convenience. That's how new the low-cost John Deere 34 Forage Harvester is. See us about one. Use our Credit Plan.



Shotzberger's
Elm 665-2141

Landis Bros. Inc.
Lancaster 393-3906

A. B. C. Groff, Inc.
New Holland 354-8001

Wenger Implement Co.
Buck 284-4467

M. S. Yearsley & Sons
West Chester 609-2990