

Over One Million Bushels of GRAIN STORAGE CAPACITY

Available To Serve You.

1. Top Market Prices
2. Private Storage All Grains
3. Reduced Storage Charges
4. Fast Unload
5. Prompt Payment

For current prices and storage rates

— CALL —

CARGILL, INC.

Marietta, Penna.

717-426-2633

● Poultry To Host

(Continued from Page 1) proximately 8 a.m. on Monday, October 9th, and returning to Harrisburg that evening. The county poultry association will handle all other tour details, it was noted, and will guide the visiting poultrymen around the county.

OTHER BUSINESS

In other business at the board meeting, directors approved several preliminary designs for association insignia, submitted by director Aaron J. Brubaker. The official insignia will be used on letterheads and for such other promotional purposes as bumper stickers and display signs.

John Jacob Oberholtzer, tour committee chairman, announced the association's annual tour will be held on Tuesday, August 1st. He noted the proposed stops will include the Hershey Chocolate Company, the Grimes Poultry Processing plant at Fredericksburg, and Witmoyer Laboratories at My-

erstown. Final details on this tour will be forthcoming next week, Oberholtzer said.

● Barley Crop

(Continued from Page 1)

excellent barley harvested earlier in the Eastern Shore area which averaged about 47 pounds per bushel.

While yields in some sections of the county are reported good in terms of bushels — 70 to 80 bushels per acre — the lower test weights will pull down total crop weights, it is estimated.

Prices paid by dealers and elevators seem to be holding firm with last year, averaging between 90 cents and \$1. As one operator observed, most farmers feed their barley crop instead of selling it, so not too many prices are figured in that average.

WHEAT

One elevator operator noted that he has seen few years when there hasn't been some wheat moving by the 4th of July, but this year the barley crop barely got started by that date.

However, it is anticipated that if the weather dries up somewhat next week some wheat

will be ready to combine. This will make 1967 one of the few recent crop years in which the wheat and barley harvests have overlapped substantially.

RAINFALL

As measured at the Lancaster station, rainfall since April 1st to date is nearly three inches below normal, but appears to be recovering. The county lagged more than four inches behind normal only ten days ago, and was the most rain-deficit area in the state. It now ranks second, behind Blairville area which is off by 3.2 inches from normal.

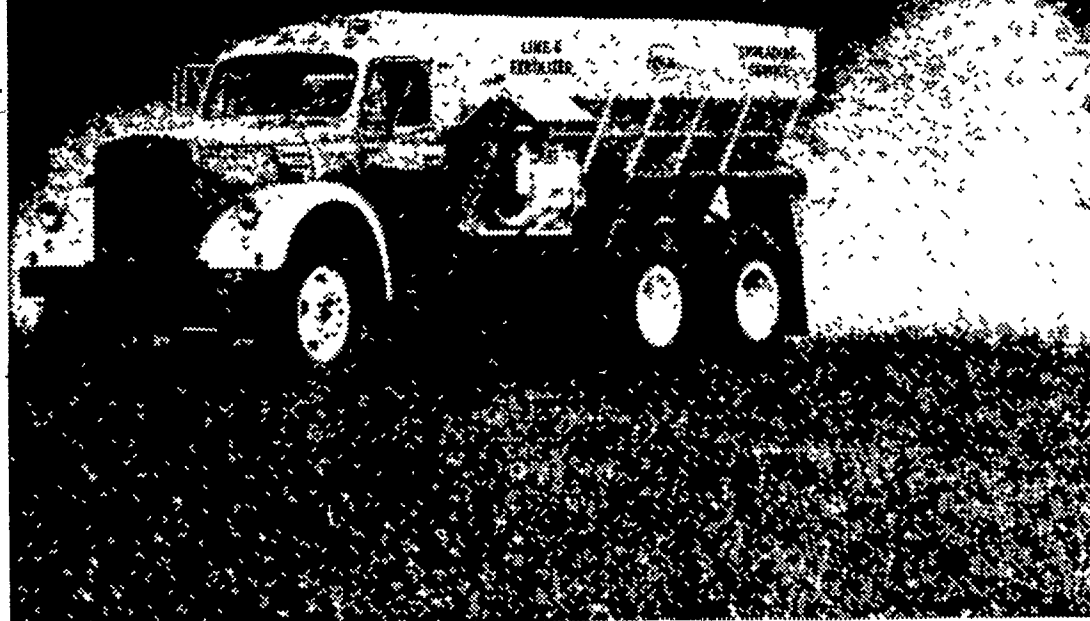
SUMMER HEAT HARD ON FARM EQUIPMENT

Although winter weather may be most damaging, summer sun and heat also shortens the life of farm equipment, say extension agricultural engineers at Penn State University. It pays to keep that expensive equipment under cover when not in use.

**What Do You Need?
A Lancaster Farming
Classified Ad Can Help**

AGWAY

**THIS IS A
TRUCKLOAD
OF EXTRA
PROFITS**



For every ton of lime a dairyman applies, he gets back an extra ton of milk during his rotation. With lime worth ten dollars a ton, and milk figured at eighty, that's a nice return.

Every crop you plant can benefit from correct applications of lime. Your fertilizer will work better. Soil organisms thrive. Organic matter releases nutrients more rapidly. Soil structure is improved. More trace elements become available.

And now is the time to spread lime. Equipment is ready to work for you. The land is firm and dry. Whether you plow this fall or next spring, the lime will be there, ready for plowing down to the root zone. Call your Agway store or representative and ask for immediate spreader service. But do it now.



MOIST LIME

"The lime you can't afford to miss"

Why spend money to lime your neighbors fields when you can use moist lime and keep it where you want it.

FOR MORE INFORMATION CALL

AGWAY INC.

Quarryville
786-2126

Lancaster
394-0541

New Holland
354-2146

**For Extra Yields
TOP DRESS NOW**
with
Farmers' Fertilizer

Farmers' Fertilizer Works

365 West Bainbridge St.
Elizabethtown, Pa.

Quality Fertilizer Since 1904

Phone 367-1211

Area Code 717

Harvesting Grain?

**Take Advantage of Our Grain
Bank & Grain Storage Program**

● SPECIAL BENEFITS

All Grain put in storage will be cleaned, treated and weighed FREE.
All Grain will be processed on the basis of the exact weight brought in.

● STANDARD HAULING CHARGES

IN EFFECT

Hauling will be available for the following Grains:

(Barley, Oats, Wheat, Shelled Corn)

● DRYING BENEFITS

We are equipped to handle any high moisture grains.

We are also interested in buying your excess grain on the daily market basis.

SEE OR CALL US TODAY

S. H. HIESTAND & CO.
SALUNGA

Phone 898-2248

Custom Mixing
Fertilizer — Feed — Grain — Coal