

Poultrymen At State Meeting Told Floor & Slat Systems Beat Cages

UNIVERSITY PARK, Pa. — Robert H. McAlexander, professor of agricultural economics at Penn State, described of raising laying hens, and the slatted-floor system, are more economical on a per dozen eggs basis than cage laying operations, members of the Pennsylvania Poultry Federation heard recently at the organization's annual meeting at Penn State University.

were \$3.55 per cwt., \$3.45, and \$3.35, respectively, for the 5,000 to 15,000 hen flocks

Net returns per flock were highest for conventional and slatted-floor houses, next highest for cages holding 3, 20, and 2 hens. One hen per cage was the least profitable operation.

For 5,000 pullets the litter-floor housing returned a net profit of \$1885 on 34-cent wholesale eggs. The slatted-floor system had a net return of \$1347. The litter-floor hous-

ing used manual egg gathering in plastic filler flats with a monorail track, tub washing, mechanical feeding and watering, and once-yearly cleaning with tractor and loader. On slatted floors, the pits were cleaned daily with automatic equipment and the litter was removed once a year.

Net returns for the litter-floor system with 10,000 hens were \$5,143 and the slatted-floor system netted \$4,197 profit. For 15,000 hens, the net returns from the litter-floor system were \$9,038 and the slatted floor a net profit of \$7,554.

For slatted floors and cage operations, increases of six to

SAVE YOUR TOES
That whirling knife-edged blade on your rotary mower is dangerous, cautions the Penn State farm and home safety committee. Check your lawn carefully for debris before you start mowing. Use a mower that is shielded down well toward the ground and treat it as you would a buzz saw. You may save your toes, or reduce the chance of having a bad leg wound.

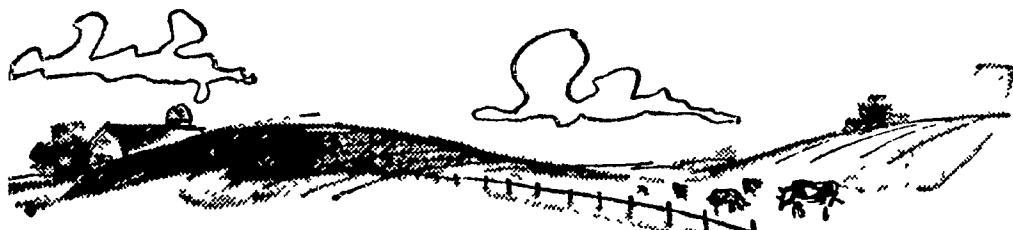
seven percent in production of saleable eggs per hen would give net returns equal to litter floor housing, McAlexander pointed out.

Some Thoughts For...



Dairy

Farmers!



JUNE IS DAIRY MONTH

- Did you do all you could to help promote your industry in the past year?
- Do you talk milk to consumers?
- Do you explain its many nutritional advantages?
- Do you set the example when you take your family out for a meal and order milk as the beverage?
- Do you have the feeding program which gives you the best return per dollar spent?

If you are in doubt about this last item talk to our Nutrition Department or our Dairy Specialist.

What else can we do to help you?

Just call



Miller & Bushong, Inc.

Ph. Lancaster 392-2145

Rohrerstown, Pa.

AGWAY

YOUR HOME AND GARDEN VALUE STORE

DON'T FORGET
JUNE IS DAIRY MONTH



NEXT THURS.
FRI. & SAT.,
June 22-23-24

We will give
free glasses
of milk.

Be sure to
stop in and
enjoy a glass
on us.

Alfalfa-Spray 22 E



**Leafhopper
Alfalfa Weevil
Spittlebug**

Gets them all without the fear of
residues in milk

It's the spray that thousands of Northeastern dairymen used last year. Agway Alfalfa Spray 22E is a convenient, ready-to-use liquid formulation of Du Pont Methoxychlor plus malathion, and is highly recommended for the weevil and other pests.

Ask your AGWAY man for 22E again this year and "play it safe/spray it safe".

We also can apply alfalfa spray with our 4 wheel drive truck.



Quarryville
786-2126

Lancaster
on Manheim Pike
394-0541

New Holland
354-2148