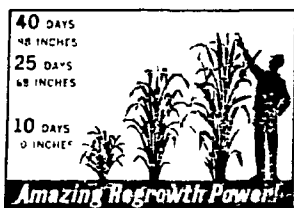


AMAZING! TREMENDOUS! MIRACULOUS!

For Pasture
For Hay/Haylage
For Green Chop
For Cover or Plow-Down



Strong words—yes! But it takes strong words to describe Agriculture's latest "miracle" crop —DeKalb Sudax Bland, the original Sorghum-Sudangrass Hybrid. These summer forages have about everything the dairy or livestock man could want in a forage crop. In test after test, they have out-yielded standard Sudangrass by 35-50%. Extremely tolerant to drought, Sudax Bland Hybrids can be grown most anywhere. They are leafy, tasty, high in feed value, and very versatile. Get the MOST from your feed acreage—plant DeKalb Sudax Bland Hybrids.

Miracle Crop of the Century

Diagram above shows amazing Sudax Bland regrowth in Texas trial. Over 2 a day.

DE, ALB and SUDAX are Registered Brand Names
SX Numbers are Variety Designations



YOUR COMPLETE FERTILIZER SERVICE CENTER

P. L. ROHRER & BRO., INC.

SMOKETOWN, PA.

Phone 397-3539

PUBLIC SALE OF VALUABLE FARM MACHINERY, PERSONAL PROPERTY & FEED SATURDAY, JUNE 24

At 10 A.M. sharp

At R. D. #1, Wrightsville, Penna. In Lower Windsor Twp. on the road between East Prospect and Craley.

The undersigned executors of the Harry D. Abel estate will offer at public sale the following.

FARM MACHINERY

D-2 Caterpillar tractor model No. 3J4162 narrow gage. D-2 Caterpillar tractor model No. 5J8805 wide gage, with tool bar blade and pulley. New Idea manure spreader on rubber, Int. 7 ft mower, 2 rubber tire wagons, Red River threshing machine with bagger & blower, Oliver superior lime spreader, Ontario 10 hoe drill, David Bradley side delivery rake, John Deere 7 ft. cut combine, McDeering double row corn planter, New Idea two row corn picker, Brady hay crimper, old Farmall tractor, Brillion 10 ft. cultipacker, 32 McDeering disc, John Deere 12 ft. harrow, John Deere model 55 three bottom plow, 3 section spring harrow, two wheel rubber tire trailer, Dellinger chop mill, stalk cutter, McDeering 10 ft. cut. binder, land roller, stone mill, Auchey one row corn planter, 100 ft. endless belt, hay tedder, hay forks, two horse wagon, single row cultivator, DeLaval cream separator, lots of milk cans, pump trough, stanchion dividers, 20 drinking cups, double bin sink, Surge 20 gal. hot water heater, Stewart clippers, feed cart, milk straps, milk scales, calf collars, rubber tire wheelbarrow, 1 1/2" water pump, tubs, buckets, lots of belts, several rolls of wire, tar paper, tractor chains, 12 iron troughs, chicken equipment, two hole corn sheller with bagger, square back sleigh, bob sled, double set of driving harness, several sets of lead, Yankee, and Brichman harness, breast chains, hames, check lines, lot of log chains, block & tackles, cables, pulleys, grindstone, approx. 5,000 tobacco lath, tobacco press, spears and shears, one & two plate iron stones, new & used lumber, dirt scoop, forks, wedges, axes, shovels, rakes, digging irons. There will be 3 wagon loads of small items used around a large farm.

HAY — STRAW — CORN

Approx. 40 tons ear corn, approx. 50 tons of timothy and clover hay, wheat and barley straw, approx. 80 bushels of oats & barley.

1954 Ford with radio, heater and overdrive.

Approx. 260 ft. of well dried walnut boards.

NOTE: The Antiques and Household Goods will be sold Friday evening, June 23 starting at 5:30 P.M. sharp and the Farm sale will be Sat., June 24 starting at 10 A.M. sharp.

Come early, lots and lots to sell. Not responsible for accidents on day of sale.

Lunch available on the grounds from Cabin Branch Farm Women

Terms: Cash

Jacob A. Gilbert, Auctioneer
Frey & Stermer, Clerks
Paul E. Stein, Attorney

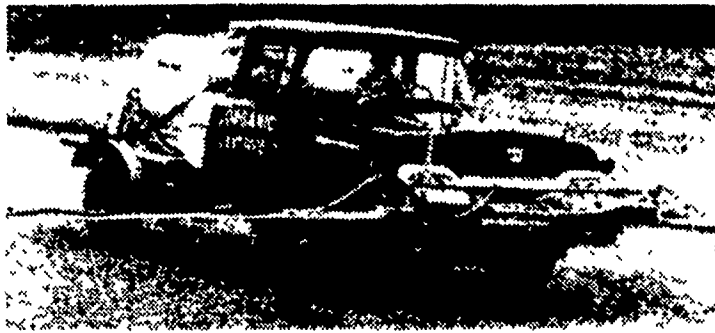
**EDWIN B. ABEL
BERTHA E. LEBER**
Executors

CUSTOM SPRAYING

by

ORGANIC PLANT FOOD CO.

Phone 392-4963



CORN WEED CONTROL WITH ATRAZINE or 2,4 D

Weed Killers Available:

Atrazine — Ramrod
2,4 D Amine or L. V. Ester
Knoxweed — Bonvel D

Pesticides Available for Alfalfa:

Weevil Control
Guthion — Parathion
Malathion — Methoxychlor
Alfa-tox

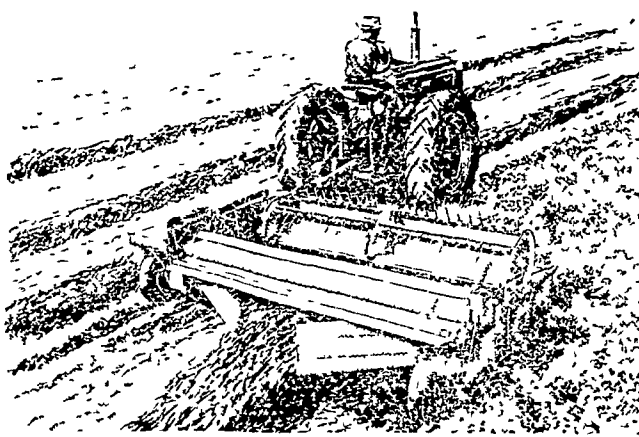
Corn Row Fertilizer:

5-10-10 5-15-5
10-20-10 Super Q

ORGANIC PLANT FOOD CO.

Grofftown Road, Next to the Waterworks

Hard-To-Handle Crops Are Easy Going For A Haybine® Mower-Crusher!



New Holland's new Haybine® mower crusher sweeps through the tallest, thickest crops at up to 8 mph . . . producing an 8 ft 9 in swath (or a windrow) of fully-conditioned, fluffed up hay. Whether you bale or chop your hay crops, you'll like the way the reel keeps the cutterbar clear and practically eliminates plugging . . . even in tangled, downed crops! See this one man mowing machine now. Phone or stop in for a demonstration.

NEW HOLLAND

L. H. BRUBAKER

R. D. 3, Lititz, Pa.

350 Strasburg Pike, Lancaster

Ph: Lanc. 397-5179 — Strasburg 687-6002 — Lititz 626-7766

Auction

ANGUS AUCTION

200 Lots, in the Great Atlantic Summer Sale — Saturday, June 24th, 11 a.m. at the Livestock Arena in downtown Leesburg, Va. Selling:

21 Sons of Ankonian President; 5 Sons of Elevate of Eastfield; 5 sons of Escort of Munorhill; Son of Banner of Belladrum and several grandsons of O Bardoliermere. These bulls are out of top cows; of top herd potential and are of show character and quality.

160 Females — daughters of today's top herd sires including 5 from famous Irene Family. Many sell with calves, or bred to great sires. Special: 20 females, safe in calf to world's largest Angus bull, Canadian Colossal. Group of open heifers, several of breeding age.

Info. & catalog — Adams-Canning Land & Cattle Co., Box 1236 Staunton, Va. Phone (703) 337-1311.

Wanted

TOBACCO PLANTS FOR SALE? If you have any, let us list them for you. Call 394-3047, Lancaster Farming

Sale Register

WED. JUNE 14—at 9:00 A.M., Blue Ball, Pa. Tractors and farm equipment, hay and straw. We sell on commission

Paul Z. Martin.

SAT. JUNE 17—Annual Northern Virginia Horse Sale, Downtown Livestock Arena, Leesburg, by Canning Land & Cattle Co.

SAT. JUNE 24—at 11 A.M. Angus Auction, Great Atlantic Summer Sale, Livestock Arena, downtown Leesburg, Va.

SAT. JUNE 24—Public Sale of Valuable Farm Machinery and Personal Property and Feed at Wrightsville R1, Pa. Terms by Edwin B. Abel & Bertha E. Leber, Executors of the Harry D. Abel Estate

SAT. JUNE 24 — Feeder Pig Sale, 2 1/2 mi south of Bethel from US 22 and 6 mi. north of Myerstown, Pa., by Norman M. Martin

Mail Box Market

For Sale—Big Dutchman egg cooler, like new. Also Badger Barn Cleaner with elevator. Ph. Palmyra. 838-3929

For Sale—Milk goat. Also goat kids, Fred Appel, Paradise R1, Ph. 717-442-8160

For Sale—Saddle bred gelding, 13 months, sorrel-blaze, right hind stocking, stands about 14 hands. Halter broken, moves with real style. Apply 1580 Fruitville Pike. Ph 397-9318.

For Sale—New 5-piece walnut dinette set. Ph 626-6544.



**SWEIGART
FIRESTONE**

329 West High St.

Manheim, Pa.

665-2258