

Milk Hearing

(Continued from Page 1)
 ing base-paying period of March-June. The cooperative proposes that this plan be made effective on August 1.
 2. Allow milk diverted for manufacturing (Class II) use to another federal order market to remain pooled under the Delaware Valley order.
 3. Price milk f.o.b. the pool plant from which it is diverted, when moved to a more distant plant within 120 miles of the basing points

After considering evidence presented at the hearing, USDA may recommend amending the order. Before the changes can be effective, it would be necessary for at least two-thirds of the dairy farmers serving the area to approve.

4-H NEWS

NORTHERN HOLSTEIN CLUB HAS JUDGING PRACTICE

by Eddie Hess, reporter

The Northern Lancaster County 4-H Holstein Club held its first judging practice on May 25th at the Henry Kettering farm, Lititz R3

The practice program was led by Joseph Brill. Eddie and Robbie Hess presented a demonstration on making a rope halter.

The next club meeting will be held June 22 at the farm of Earl Smoker, Stevens R1, at 7:30 p.m.



AAA SAYS:

DON'T FORGET TO RENEW YOUR DRIVER'S LICENSE THIS MONTH!

Moved To New Location



Call Us... FOR FAST ON-THE-FARM SERVICE

SWEIGART FIRESTONE

329 West High St. Manheim, Pa. 665-2258



Free Prospectus Booklet

gives you the facts on

CHANNING GROWTH FUND

A fully managed mutual fund whose goal is the possible growth of its shareowner's capital. Shares may be purchased under the voluntary Open Account Plan with an initial investment of \$100 and subsequent investments of \$25 or more. Mail this ad for a free Prospectus-Booklet.

Wm. H. Wilson
 Channing Co., Inc.
 Affiliated with Federal Life and Casualty Co.
 124 College Avenue
 Lancaster, Pa. 17603
 Ph. 717-392-4181

Name
 Address

Dan Stoltzfus

(Continued from Page 10)

carried to the milk room and dumped into the bulk tank, but it is hoped that some of this labor can be saved by investing in a portable milk tank which will be used to transport milk in bulk to the big tank.

The basic breeding of the Stoltzfus herd is Rag Apple. Although he now raises all his own replacements, Stoltzfus hopes to have more young stock available for sale to other breeders in the future.

As one step toward the goal of selling young stock, Stoltzfus consigned a July heifer calf to the Pennsylvania State Holstein Calf Sale held at Harrisburg on April first. The

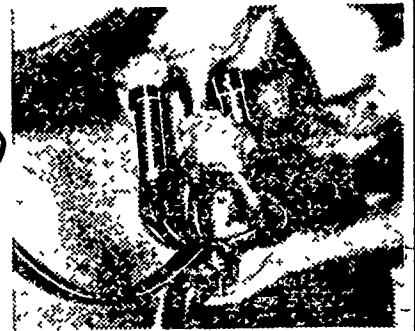
home-bred calf brought the third highest price among animals sold by local breeders at \$460.

Stoltzfus' crop program consists of 42 acres of corn, 37 acres of alfalfa, 16 of wheat, and the balance of the 111 acres in permanent pasture.

In addition to Dan and his wife Margery, the Stoltzfus family includes two boys — ages six and eight — and a daughter who is two-and-a-half.

What Do You Need? A Lancaster Farming Classified Ad Can Help

Why Wait?



FOR GREATER PROFITS

install a De Laval Combine Milker NOW

De Laval Combine Milkers are designed for the forward-looking dairyman who wants to milk fast and clean, save time and labor, and prevent injury and disease in his herd.

Let us show you how the De Laval Combine Milker outmilks and outperforms all other pipelines, and how easily you can own one.

Landis Bros., Inc.

1305 Manheim Pike
 (1 Mile North of Lanc. on Rt. 72)

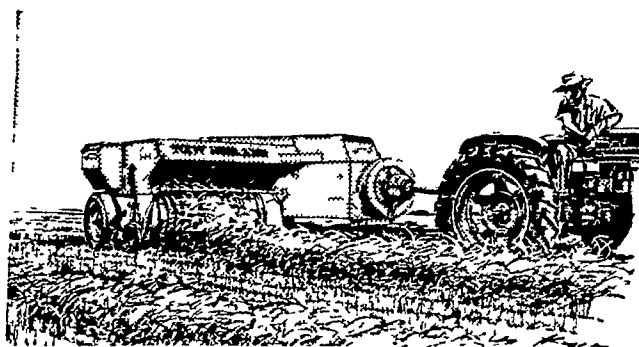
LANCASTER, PENNA.

HEADQUARTERS FOR THE COMPLETE LINE OF EASY-TO-PAY-FOR DE-LAVAL EQUIPMENT

PH. 393-3906

PRACTICAL DESIGN and DEPENDABLE ACTION!

Rugged! Rugged!
 Built extra-tough for extra-rough baling!



The New Holland Hayliner® 275 is beefed up in every vital area to stand up under punishment in sorghum, sudan hybrids, cane and other tough-to-bale crops. The bale chamber is extra heavy, extra-rugged. The knotter and twister surfaces are hardened in the vital wear areas. You'll put up thousands of 14" x 18" bales—square, tightly-tied bales—without having to worry about repairs. The Super Sweep pickup with 120 curved teeth gets the short, fine hay other pickups leave behind. This is the baler for the man who has to keep going! Stop in now or call for a demonstration. Remember New Holland Purchase Plan financing makes it easy for you to own the best!

NEW HOLLAND

L. H. Brubaker
 350 Strasburg Pike
 Lancaster

J. B. Hostetter & Son, Inc.
 Mt. Joy

A. B. C. Groff, Inc.
 New Holland

C. E. Wiley & Son
 Quarryville

L. H. Brubaker
 R. D. #3
 Lititz

BUY NOW and SAVE!

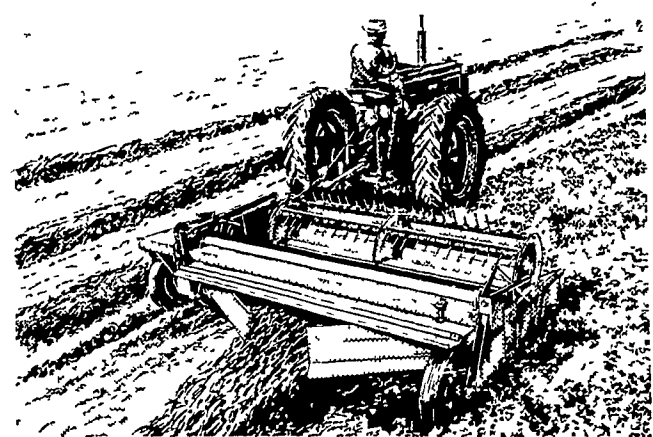


ONE MAN does it!

Automatic Bale-Thrower offered by New Holland makes putting up hay a 1-man operation. Bales are "air-lifted" from baler to wagon as fast as baler can turn them out. Controlled from tractor seat. Many exclusive advantages. Now available for most current New Holland balers.

Just stop in and say: **SHOW ME!**

Hard-To-Handle Crops Are Easy Going For A Haybine® Mower-Crusher!



New Holland's new Haybine® mower-crusher sweeps through the tallest, thickest crops at up to 8 mph . . . producing an 8 ft. 9 in. swath (or a windrow) of fully-conditioned, fluffed-up hay. Whether you bale or chop your hay crops, you'll like the way the reel keeps the cutterbar clear, and practically eliminates plugging . . . even in tangled, downed crops! See this one-man haying machine now. Phone or stop in for a demonstration.

NEW HOLLAND