

MAY 15 1967

Pennsylvania State University

Lancaster Farming

VOL. 12 NO. 23

Lancaster Farming, Saturday, May 6, 1967

\$2 Per Year

Deadline May 22 For County Dairy Princess Contest

The deadline for Lancaster County farm girls to enter the county contest for Dairy Princess for 1967 is fast approaching. According to contest chairman Mrs. Herbert Royer, 2025 Oregon Pike, May 22nd will be the last call for aspiring princesses.

The 4th annual Pageant will be held at the Host Town Motel, Lancaster, on June 13, Mrs. Royer noted, with judges to be announced later.

Who is eligible? Any daughter of a producing Lancaster County dairy farmer; she must be between the ages of 17 and 25, and a high school graduate as of this June. Interested girls should each submit a head and shoulders, black and white photo to Mrs. Royer.

The county contest winner will receive a basic wardrobe and other prizes, the chairman noted. All the girls competing will receive complimentary gifts, she added.

This year's County Dairy Princess is Carol Hess, daughter of Mr. and Mrs. Elvin Hess, Jr. of Strasburg. Miss Hess was also first runnerup for the 1966 State Dairy Princess title. (Continued on Page 4)



COLLECTING EGGS at the L. R. Musser Poultry Farm requires about four hours a day. Here Elias Musser is making the first gathering of the day. Eggs roll out the rear of the roll-away nests as soon as they are laid. Floor eggs also roll out, due to the slope of the wire floor, and are gathered at the same time. L. F. Photo

Small Integrated Operation Run By County Poultryman

by Don Timmons

Take 50 acres of corn grown on your own farm, run it through your own feed mill, feed it to your own chickens, process the eggs through your own plant, market the product yourself and you have a fairly well integrated operation.

This is somewhat the pattern being followed by Irvin R. Musser of Mount Joy R1. Although he doesn't raise enough corn to meet his total feed needs, and actually buys most of the eggs he sells, his could be broadly defined as an owner integrated setup.

Nearly everything Musser is doing in his operation reflects an active imagination looking for new solutions to old problems. This is evident from the unusual kind of laying house he chose; from the modifications he has made in the design of the house; and from the various methods of egg marketing in which he is engaging.

FIRST OF ITS KIND

The laying house Musser chose, after considering several different types, was basically the Penn State-Glenn Bress-

ler, slant-floor model. It is the first house of this design in the area.

Although Bressler's original house had wire floors slanted toward a central egg gathering area, Musser reversed that, slanting his floors to the outside with a slope of 1½ inches per foot. He estimates his costs for the building and equipment — not including the feed mixing equipment or the

(Continued on Page 6)

Meats Judging Area Contest To York Countian

A York County Future Farmer from Dallastown captured the area FFA meats judging contest held Tuesday at Kunzler and Co., Inc.

Dean Godfrey won over 32 other contestants with a score of 496 of a possible 500 points. Godfrey missed a perfect score by a wrong choice on one cut of meat.

Runnerup, with 408.9 points, (Continued on Page 4)

Expanded NEPPCO Egg Schools Slated For Penn State & Rutgers

Two schools of high international reputation will be offered again this year by the Northeastern Poultry Producers Council. The NEPPCO Egg Quality School, in its 36th year, will be held at Penn State University July 9-13. The 4th NEPPCO Egg Marketing School is set for Rutgers University, New Brunswick, N. J., June 11-14.

The Marketing School will deal primarily with the economics of eggs — processing, pricing, and selling. It also will cover certain procedures in egg plant management of vital concern to anyone in the egg business.

Featured in the marketing curriculum will be addresses by Dr. Lawrence B. Darrah, marketing specialist, Cornell University; Gerald Karadibi, former egg buyer and now dairy de-

partment specialist for Shop-Rite Food Stores; L. S. Heemstra, well-known egg marketer from Cleveland.

(Continued on Page 5)

Slaton To Be Featured At 4-H Conservation Club Roundup May 8th

The roundup of the northern and southern Lancaster County 4-H conservation clubs will be held Monday night, May 8, in conjunction with the regular meeting of the Lancaster County Soil & Water Conservation District directors.

Exhibits will be judged by Charles Slaton, SCS public in-

(Continued on Page 8)



Charles Slaton

Alfalfa Weevil, Hay Crop Enemy No. 1

The alfalfa weevil continues to be the number one insect pest in farm crops, says Lancaster County associate agricultural agent Arnold G. Lueck. He anticipates that infestation and feeding injury of the weevil will be similar this year to experiences in recent years.

However, two additional insecticides have been approved for use against the weevil this year, Lueck notes. These are methyl parathion and carbaryl.

A major consideration in getting effective control relies on the timing of the spray application, Lueck advises.

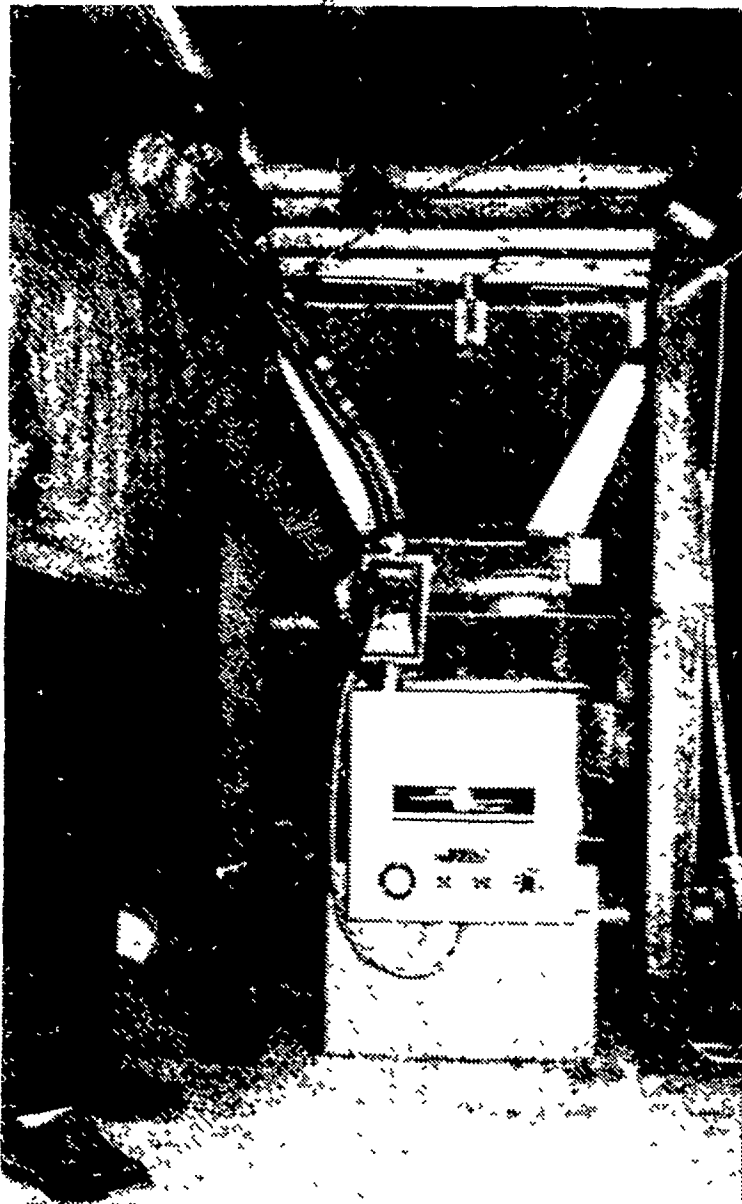
"When weevil feeding is evident in 50-75 percent of the tips, you will either have to spray or harvest the first cutting," he stated. "Removal of the first cutting in the bud stage is recommended where at all possible, then spray the stubble," the agent adds.

(Continued on Page 4)



The temperature range for these parts may get back to somewhere near normal for the next five days; normal for the period is a range of 72 to 48 degrees. Although it will be cool over the weekend, temperatures will moderate thereafter, says the weatherman.

However, he also expects rain over the weekend, and again about Wednesday, with total precipitation measuring greater than ½-inch.



IRVIN R. MUSSER shows how this mix mill grinds and blends his feed ingredients which are stored in overhead bulk bins. Finished feed flows from the mixer to the automatic feeder as the latter signals for it.

L. F. Photo

Farm Calendar

May 8-7 p.m., Northern & Southern Lancaster County 4-H Soil & Water Conservation Clubs Roundup at Ephrata High School.
-7:30 p.m., Dress Revue meeting for any 4-H Leaders, or members, wishing to attend, at Penn Manor High School.
-8 p.m., Lancaster County SWCD directors at Ephrata High School.
May 10-7:30 p.m., Lancaster County 4-H Guernsey Club, at Solanco High School.
May 11-7:30 p.m., 4-H Teen Leader meeting at Landisville Elementary School.