

ANOTHER TOBACCO SEASON gets underway in Lancaster County as demonstrated by these muslin-covered tobacco beds seen this week on a farm in the Lititz area. Spring hasn't really gotten off to much of a start in the county yet, but the calendar says, "GO".
L. F. Photo

● Have You Heard

(Continued from Page 15)

Will the appliance be used often and do many varied tasks? Do you want the convenience it offers?

Is there a handy place to store the appliance?

Does it carry the tag of the Underwriters' Laboratory?

Is service convenient if repair is necessary?

Is there a warranty card with the equipment and what protection does it give?

Is the wiring system in your home capable of taking on the added load from the appliance?

Will the initial cost fit the budget and will the appliance pay for itself in work done?

For Your Information . . .

To prevent knits from snagging or stretching during machine washing, first put each garment into a mesh bag or pillowcase.

Look for ease of cleaning when you buy cooking utensils. Avoid utensils with many crevices and seams in which bacteria and food particles can hide.

Never wrap the cord around an electric appliance while it's hot. If possible, separate cord from the appliance and store it where it will be free from kinks and knots.

A wise woman makes her husband feel like president when he's only chairman of the entertainment committee.

PUBLIC AUCTION
— of —
FARM EQUIPMENT

Friday, April 21, 1967
at 12:30 P.M.

Having responded to the Lord's call for Mission Service, I am discontinuing farming.

Located on the premises, 4 miles s. of Oxford, 7 miles n. of Rising Sun, Maryland, 1 mile n.w. of Route #1 on the Nottingham and Pine Grove Roads. (Watch for sale arrow on Route #1).

SIX SELF-PROPELLED COMBINES
FIVE TRACTORS

3 Massey-Ferguson 'Super 92' combines with 12' header, power steering and tanks; MH 'Special 92' 12' header, p.s. with tank; 2 MH 'Special 80' one with 12' header and one with 10' header & bagger; J.D. '60' tractor with p.s. & live PTO; J.D. 'A' tractor; 2 J.D. 'B' tractors; 15 J.D. and NH wagons with NH grain boxes; J.D. 15-disc grain drill with grass seed att., used twice; J.D. #5 mower; J.D. rake; J.D. hay crimper; J.D. 3-b plow with power trol; J.D. Killifer disc; J.D. 9' disc; J.D. cultivators; Int. H tractor; 5 Smalley grain blowers with Wisconsin motors; 45' Smoker elevator; Oliver rake; field sprayer; Ford weeder; rubber-tired flat wagon; wagon load of grease, oil, tools and miscellaneous items, also a 1956 Buick car.

Terms by:
MELVIN FREESE
L. Robert Frame, Auctioneer

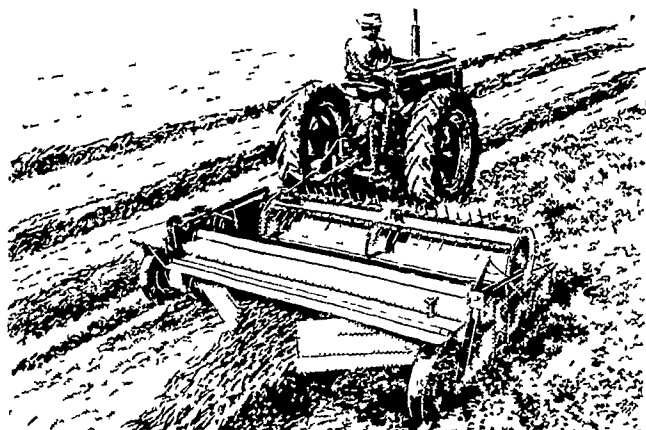
Box 128
Exton, Pa. 19341
215-363-7379

MILES W. FRY & SON

Frys ville, Ephrata R3, Pa. 17522
Tel. 354-9558

Growers of:
HYBRID POPLARS — a good tree.
PENNGIFT CROWN VETCH — a faultless slope cover with good forage-crop potential. Certified seed and crowns available.

Hard-To-Handle Crops Are Easy Going For A Haybine® Mower-Crusher!



New Holland's new Haybine® mower-crusher sweeps through the tallest, thickest crops at up to 8 mph . . . producing an 8 ft. 9 in. swath (or a windrow) of fully-conditioned, fluffed-up hay. Whether you bale or chop your hay crops, you'll like the way the reel keeps the cutterbar clear, and practically eliminates plugging . . . even in tangled, downed crops! See this one-man haying machine now. Phone or stop in for a demonstration.

NH NEW HOLLAND

L. H. BRUBAKER

350 STRASBURG PIKE, LANCASTER
R. D. 3, LITITZ, PA.

Phone: Lanc. 397-5179 — Strasburg 687-6002 — Lititz 626-7766

Sale Register

SAT. APR. 15—Spring Clearance Sale, Lawn & Garden Equipment, 1301 Park Ave., West Chester at 11 a.m. Edwin H. Willard, owner. L. Robert Frame, Auct.

SAT. APR. 15—Public Sale of Full Line of Farm Equipment, located 1 mi. south of Refton Post Office, 9 mi. south of Lancaster. Terms by R. B. Reinhart.

MON. APR. 17—Horse Sale at Martin's Sale Stables, Blue Ball, Pa., Lanc. Co. Equipment at 4 p.m. Horses at 6 p.m. Terms by Paul Z. Martin.

WED. APR. 19 — Contents of Meat & Grocery Store, 20 E. Main St., Honey Brook at 1 p.m. John Walter, owner. L. Robert Frame, Auct.

THURS. APR. 20 — Maryland Beef Cattle Producers, Inc. 13th Annual Spring Feeder Cattle Sale, Baltimore Livestock Auction Market, Inc. West Friendship, Md.

THURS. APR. 20—275th Garden Spot Sale located on the J.M. Brubaker Farm about 1 mi. south of Willow Street Village, 4 mi. south of Lancaster, Pa. Just off Rte. 72 and 222.

FRI. APR. 21—Winchester Feeder Calf & Yearling Sale, Farm-

ers Livestock Exchange, Inc., Winchester, Va.

FRI. APR. 21—Farm Equipment 4 mi. south of Oxford, Nottingham & Pine Grove Rds. Melvin Freese, owner. L. Robert Frame, Auct.

FRI. APR. 21 — Meetinghouse Lane Farm Complete Dispersal at the farm, Honey Brook, Pa. Estate of H. H. McConnell, owner.

MON. APR. 24—Annual Quarter Horse Sale limited to 75 head, Martins Sale Stables, Blue Ball, Pa. at 6 p.m. Paul Z. Martin.

MON. APR. 24 — Puddington Farms Complete Dispersal located in Cecil County, Maryland, on Shelton Road off Md. Rt. 273, 1½ mi. east of Calvert Blinker light which is at intersection of 273 & 272. Terms by William A. Shelton.

FRI. APR. 28—Public Sale of Valuable Real Estate & Farm Implements located at RD #1, Brogueville, Pa., in Chanceford Twp. near the St James Church. Terms by Mary J. Snyder and Helen M. Badders, executrixes of the Harry C. Fake Estate.

Congressmen complain that they can't get by on their \$30,000 salary. They would prefer to be paid at a rate of \$6 much per word.

Lancaster County Farm News Is Always Page 1 Material With Us

FOUR SEASONS FARM & HOME CENTER

197 Greenfield Road, Lancaster

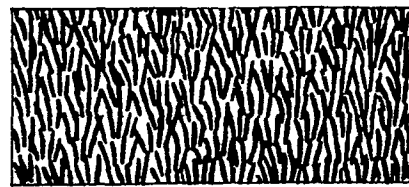
Scotts TURF BUILDER

TURF BUILDER PLUS 1
TURF BUILDER PLUS 2
TURF BUILDER PLUS 4

GIVE YOUR LAWN THE FULL FEED APPLICATION



BEFORE



AFTER

Our Spreader Available **ONE Hour FREE** For Your Use With Each Bag Purchased

An unusual Guarantee

Every Scotts product purchased in our store carries an unqualified guarantee of satisfaction or your money back — at once and with no quibbling. YOU are the sole judge.



FOUR SEASONS FARM & HOME CENTER

197 Greenfield Road, At The By-Pass
Next Door To Anderson Box Co.
Lancaster, Pa. 397-4451