

## 6th Grape State, Pa. Considering Wine Industry

**HARRISBURG**—The possibility of establishing a wine industry in Pennsylvania is being explored by the State Grape Marketing Advisory Council.

The group is the sixth commodity council formed in the state to help develop new and stronger markets for Pennsylvania agricultural products. Pennsylvania is the nation's fifth leading grape producing state, with a crop valued in excess of \$6 million annually.

State agriculture secretary Leland H. Bull told council members that a much more intensive marketing effort will be required to cope with "production increases anticipated in the years immediately ahead." He pointed out that the number of grape vines in commercial vineyards has increased approximately 20 percent in the past three years.

In addition to investigating the possibility of a wine industry as a new market for grapes, the council also will seek methods of expanding both fresh and processing markets.

The council, at its organizational meeting in Erie, named Douglas P. Moorehead, chairman; George F. Luke, vice-chairman, and George Scaford, secretary. All are from North East, Erie County.

### "No Grazing" Period On Diverted Acres Set

The "no grazing" period for diverted acres under the 1967 Feed Grain Program started April 1. It will continue for the following six months until October 1, according to Lancaster County Agricultural Stabilization and Conservation Committee chairman Fred G. Seldomridge.

Farmers who are diverting acreage under the program have agreed not to graze the diverted acres during a specific six month period of the growing season, and not to cut hay from diverted acres at any time during the year.

Farmers participating in the Conservation Reserve and Cropland Adjustment Programs have agreed not to graze land diverted under these programs or harvest hay from such land any time during the life of the agreements.

Lancaster County farms signed up to participate in the 1967 commodity diversion programs for corn and grain sorghum number about 310, Seldomridge noted.

### Freeman Sets 1967-68 Dairy Products Prices

Secretary of Agriculture Orville L. Freeman has announced that dairy products acquired by the Commodity Credit Corporation under the dairy support program would not be offered for sale back to the domestic market at less than 110 percent of the purchase prices.

At the same time, it was announced that the present purchase prices for dairy products would be continued.

On Oct. 14, 1966 the Secretary announced that support prices then in effect, \$4.00 a hundredweight for manufacturing milk and 68 cents a pound for butterfat in farm separated cream, will be continued in the 1967-68 marketing year.

These support prices had been increased on June 29, 1966 from \$3.50 a hundredweight for manufacturing milk and 61.6 cents a pound for butterfat, and the dairy product support buying prices were increased correspondingly to those now in effect.

### Have You Heard

(Continued from Page 15) their stories and share their day-to-day experiences.

Parents can and do determine the future attitude of their child by showing or not showing their interest.

### For Your Information

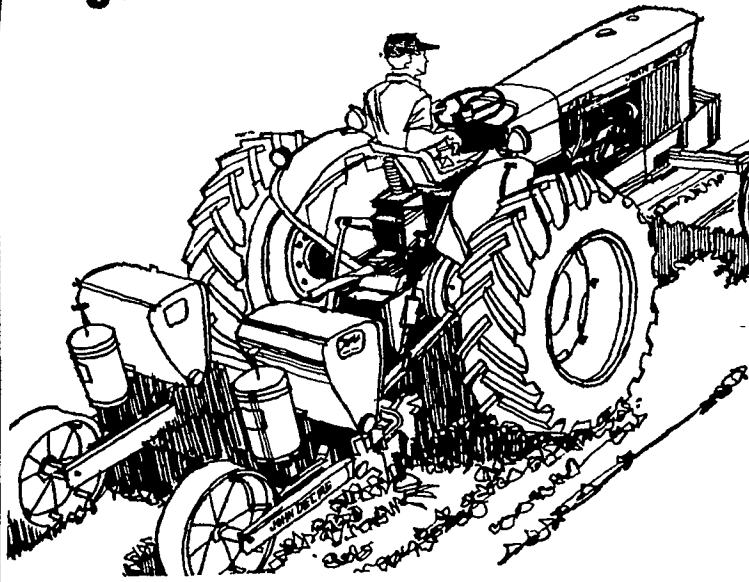
Washability is important in buying a bedspread. A cotton tufted spread has an added attraction. It looks better after it's washed. Laundering locks the tufts in place and makes them bloom. This gives better coverage and a more fluffy appearance to the spread.

For juicy grapefruit, select Crumble crisp bacon over a ones which are heavy for their size, well-shaped, and relative-ly smooth with a thin skin. to this dish.

**MARYLAND BEEF CATTLE PRODUCERS, INC.**  
**13th Annual SPRING FEEDER CATTLE SALE**  
 1:00 p.m., Thursday, April 20, 1967  
 Baltimore Livestock Auction Market, Inc.  
 West Friendship, Maryland  
 Intersection U.S. Rt. 40 & Md. Rt. 32.  
 25 Miles E. of Frederick, Md.  
**700 STEERS & HEIFERS**  
 Angus Hereford Shorthorn Santa Gertrudis  
 All steer calves grading "Fancy" will be sold individually.  
 All animals meet health requirements for interstate shipment.  
 For additional information contact: Amos R. Meyer, Dept. of Markets, University of Maryland, College Park, Maryland 20740  
 Auctioneers: Col. Stan Haworth — Col. Charles Bachman

**MILES W. FRY & SON**  
 Frysville, Ephrata R3, Pa. 17522  
 Tel. 354-9558  
 Growers of:  
**HYBRID POPLARS — a good tree.**  
**PENNGIFT CROWN VETCH — a faultless**  
 slope cover with good forage-crop potential. Certified seed and crowns available.

**Pick a John Deere**  
**53 h.p. 2020 to hustle**  
**seedbed preparation,**  
**get this bonus...**



**Power and power outlets**  
**to hustle fully equipped**  
**planters—2- and 4-row**

You can turn a lot of ground per day plowing 4 furrows or disking an 11-foot swath per pass at a steady 4-1/2 to 5 mph. That's par for a "2020." The news is just as good when it's planting time. "Floating" control, through cylinder or hitch, makes for constant planting depth over all terrain. And the "2020's" Power-on-Demand hydraulics lets you raise and lower fully loaded, fully equipped planters effortlessly, positively. The 8-speed transmission puts the exact planting speed you like at your fingertips. The proof is in the driving... be our guest for a field test. Credit available.

**A. B. C. Groff, Inc.**  
 New Holland 354-8001



**Landis Bros. Inc.** Lancaster 393-3906  
**M. S. Yearsley & Sons** W. of Chester 609-2990  
**Wenger Implement Co.** 'sberger's  
 Buck BU 4-4467 665-2141

## ANNUAL SPRING STOCK CATTLE SALE

Friday, April 14, 1967  
 Sale Starts — 1:30 P.M.

**700 HEAD 700**

Steers and Heifers  
 Herefords, Angus, Shorthorns  
 All Local Cattle

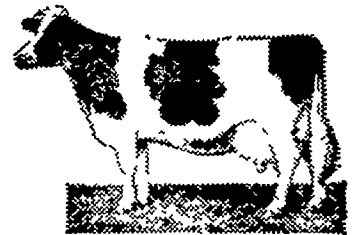
**BLUE RIDGE LIVESTOCK SALES, INC.**  
 Charles Town, W. Va.

## RABEULA'S Complete Herd Dispersal

LOCATION: 8 miles northwest of Westfield, Pa. and 1 mile west of North Fork, Pa., Potter Co.

**TUESDAY, APRIL 11**

Starting Promptly at  
 12 O'clock Sharp



**78 HEAD HOLSTEIN CATTLE 78**

**50 Registered 28 Hi-Grades**

(2 CLASSIFIED VERY GOOD, 15 GOOD PLUS, 5 GOOD)

35 Mature animals — 22 Registered, 13 grade; Bred heifers — 10 Registered, 5 grade; Open heifers — 6 registered, 5 grade; Started calves — 12 Registered, 5 grade — (2 months to 7 months old).

1 Registered year old bull: Sire — Willmi Ivanhoe Belking-er V.G. Dam Rabeula Sovereign Burk Tina G P Tina's Records:

1 yr. 11 mo.	305 da.	15,701 M	600 F	3 8 T
3 yr. 0 mo.	338 da.	17,646 M	676 F	3 8 T
4 yr. 0 mo.	105 da.	8,028 M	308 F	3 8 T inc.

DHIA 1965 15,469 milk 573 fat 4th in Potter County 1965  
 1966 14,888 milk 541 fat (1/2 first calf heifers)  
 1967 150 da. 33 cows 6,557 milk 254 fat 3 9 T inc.

**HIGH IN POTTER COUNTY DHIA FOR MONTH JANUARY 1967**

32 cows 1818 milk 69 fat 3.8 T

Fresh cows, close springers, several bred back for fall freshening, NEBA breeding Bred animals bred to good NEBA & ABS sires 7 in calf to Don Augur Mothermartha Promis Show winners selling — Rose Strathaven Eminent dau over 100,000 milk. Grand Champion at Potter County Fair '64, 2nd dry cow in NEBW show at Mansfield, Pa 3 daughters selling (1 milking, 1 bred heifer, 1 started calf), 2 granddaughters of Rose, 1 bred heifer, 2nd in 4-H Potter County Fair and a milking granddaughter, a show prospect. Blossom Wildmoor Filbert ABC Conqueror dau., 1st in '65 Potter County Fair in Jr. calf class, 2nd Blue in NEBA show, 5th in state show in '65.

**CERTIFIED & ACCREDITED 100% VACCINATED**  
**READY FOR INTERSTATE TEST CHARTS SALE DAY**  
 Individual Examination by Local Veterinarian  
 Innoculated for Colds

### PRODUCE

Quantity of Barn dried hay. Quantity of corn silage in 14x30 silo.

**TERMS: CASH OR GOOD CHECK SALE DAY**

**MR. & MRS. RALPH SNYDER, Owners**

CARL DILLER & EVERETT KREIDER, Auctioneers  
 SWEET & VAN VEGHTEN, Clerks  
 KENNETH HOOSE, Leadsman

**D. O. Rockwell, Sale Mgr.**

**Troy, Pa. 16947. Phone 717-297-3460**

Catalogs Mailed on Request Lunch Available  
 Tent Visitors Welcome

### FARM FOR SALE

260 Acres 2 houses, 2 barns, tool sheds, garages Main house 8 rooms recently remodeled, wall to wall carpeting, all thermopane windows, new heating system. Main barn, 36 stanchions, box stalls, adjoining calf barn, gutter cleaner, modern milk house, Zero bulk tank, pumping station Tenant house and heifer barn. Natural gas heat to all Farming land in the best of cultivation. Pond well stocked with trout. Contact owners, Mr and Mrs. Ralph Snyder, Westfield, Pa. Farm shown by appointment only.