

4-H NEWS

ROUGH RIDERS CLUB HAS REORGANIZATION MEET

by Bonnie Shaub, reporter

At its reorganizational meeting March 16 at the Quarryville Fire Hall, the Rough Riders 4-H Horse and Pony Club elected new officers.

Named president was Cathy

Morrison; vice president, Steve Mitchell; secretary, Denise Shaub; treasurer, Fred Shaub; and news reporter, Bonnie Shaub.

New members accepted into the club were Shirley Craig, Kevin Heagy, Kathy Lefever, Linda Weaver, Mary Alice Lefever, Dorothy Lefever, and Penny Waters.

Plans for future club events include a gymkhana, and a trip to the Christ Home at Paradise with entertainment by Mr. and Mrs. Skip McCrabb and their truck horse. There will also be a trip to a standard bred training track in April.

Leaders present at this meeting were Pat Shaub, Carol Henkel, and Mr. and Mrs. Harold Gloff.



Transfer Milk Efficiently From Cow to Bulk Cooler

The "Sputnick" MILK-PORTER is the cleanest, most efficient method for transferring milk from cow to bulk cooler.

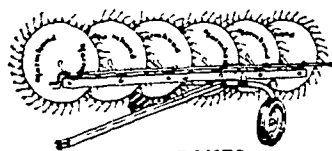
- Manufactured from heavy gauge stainless steel.
- Lid seals tightly to keep milk germ free.
- Passes through openings 29" and over.
- Moves quiet and easily on rubber-tired, ball bearing wheels.
- Does away with long, expensive pipe lines, milk pumps and releaser.
- Two sizes.
- Low-cost sanitizing.

Inquire About Our Lease Plan

Approved for City of Philadelphia

Amos H. Rutt
R. D. 2, Quarryville, Penna.
786-3897

Look to FARMHAND for all your hay handling needs



WHEEL RAKES

for all haying—5 to 9-wheel models, special Y-74, 11-wheel unit. Individual wheel suspension gets all the hay in any field in any speed.

BALE BUNCHER

cuts bale handling costs as much as 30%. Bales are bunched for fast, easy loading. Simple design—trouble free operation.

WINDROW TURNER

mounts on nearly all makes tractors. Speeds drying time. No windrow too large—none too small.



New & Used Tractors and Equipment

Authorized Ford and Farmhand Dealer

CLYDE E. KEENER

Intersection of Rt. 72 & 230
Lancaster, Pa.
Ph. 569-9861

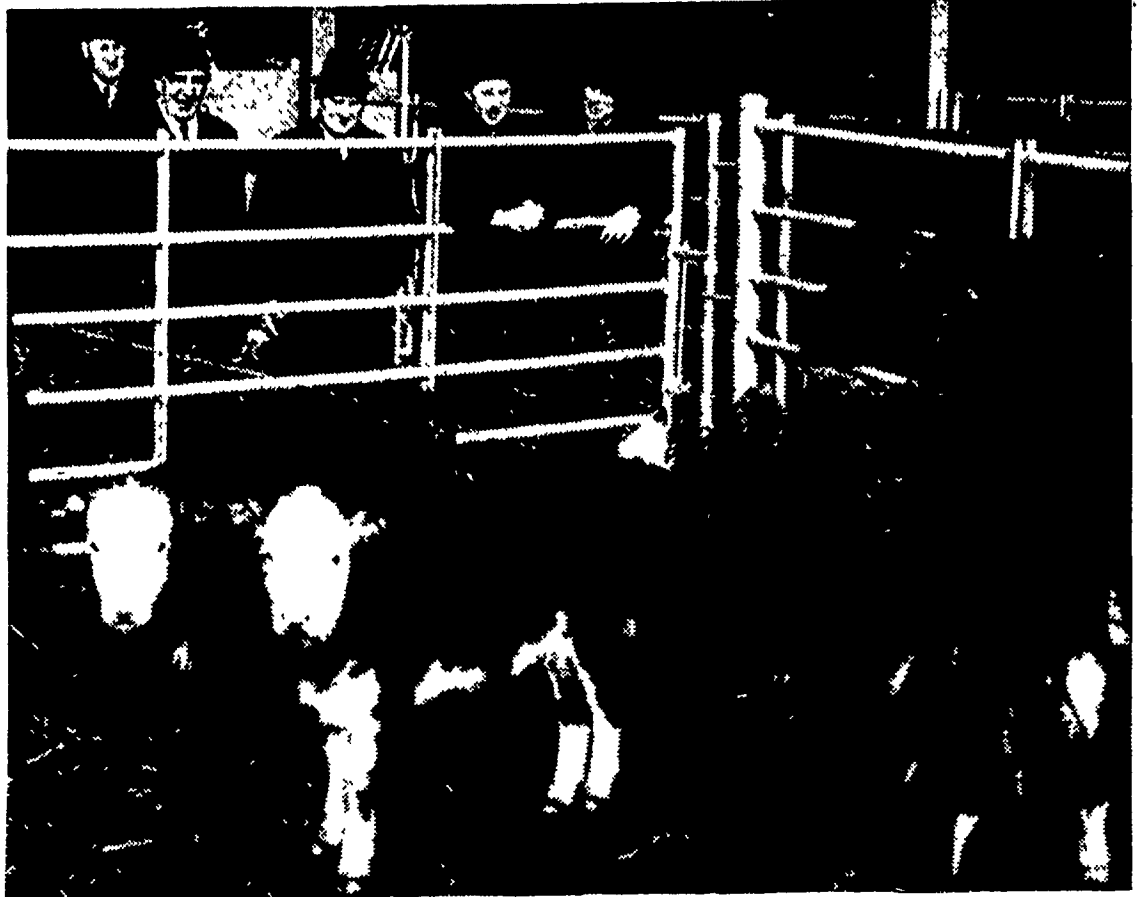
ELM-PENRYN COMMUNITY CLUB REORGANIZES

by Dale Ulrich, reporter

The Elm-Penryn 4-H Club held its reorganizational meeting on Monday evening, March 20, in the Penryn Fire Hall.

The following officers were elected for the coming year: president, Mike Hosler; vice president, Nancy Nestleroth; secretary, Joseph Lefever; treasurer, Jonn Lefever; news reporter, Dale Ulrich; game leaders, Rose Ulrich and Jay Witman; leaders, Carl Nestleroth, Mis Mark Hosler, and Mis Henry Hess.

The next meeting will be held April 17 at 7:30 p.m. in the Penryn Fire Hall.



ANGUS-HOLSTEIN CROSSBRED COWS and their Polled Hereford calves, owned by the State Correctional Institution at Rockview, were the first cattle housed in the new Large Animal Center at Penn State University. The cattle are used for research on feeding systems and milk production as part of the Penn State-Rockview beef breeding and management

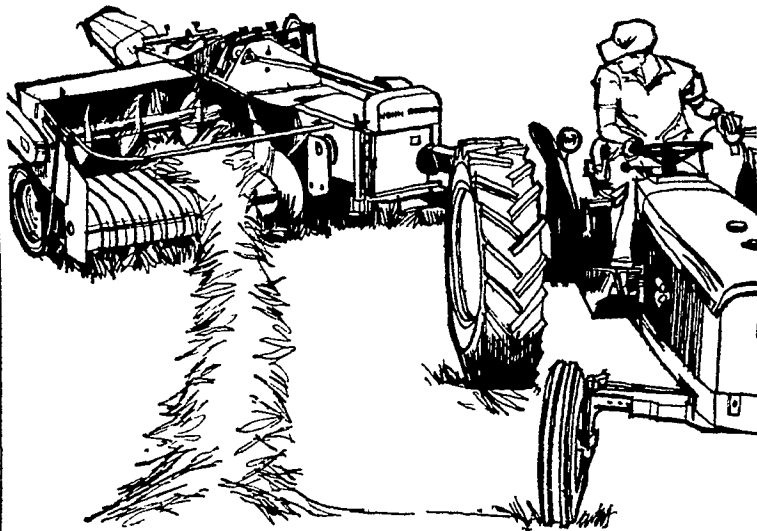
project. Viewing the cattle are, left to right, James Kirk, superintendent of Correctional Industries; Angelo Cavell, superintendent of Rockview; Joseph Musser, assistant superintendent of Correctional Industries; Dr. T. B. King, head of the Department of Animal Science at Penn State; and Dr. Lowell Wilson, beef researcher at Penn State.

Research Expands

(Continued from Page 5)
al breeding values of the bulls. Correlations between different economic characteristics such as gain, conformation, and car-

ness meatiness and quality will also give needed details about how much each of these characteristics should be emphasized in selecting replacement bulls and heifers, he concludes.

Pick a John Deere 38 h.p. 1020 for cultivating, get this bonus...



"Live" PTO power for baling... with low-built stability to hug the slopes

Up to 24 inches of clearance make the "1020" an A-1 choice for 2- and 4-row cultivating. Over and above that clearance, though, the "1020" is a perfectly styled haying tractor—with 4-wheel stability and low center of gravity. Available with exclusive "live" mid-point PTO for mower-power... and dual-speed rear PTO for conditioner or baler. One low step gets you on and off a "1020" easily. Be our guest for a field test of this lowest-priced tractor in The Long Green Line. Credit? Yes.

A. B. C. Groff, Inc.
New Holland 354-8001

Landis Bros. Inc.
Lancaster 393-3906

Wenger Implement Co.
Buck BU 4-4467

M. S. Yearsley & Sons
West Chester 609-2990

Shotzberger's
Elm 665-2141



GUERNSEYS

ROBIN RUN DISPERSAL

Russell and Ben Smith, owners
At the farm, Wycombe, Bucks Co., Pa.
Monday, April 10 — 12:30 P.M. (EST)

79 HEAD

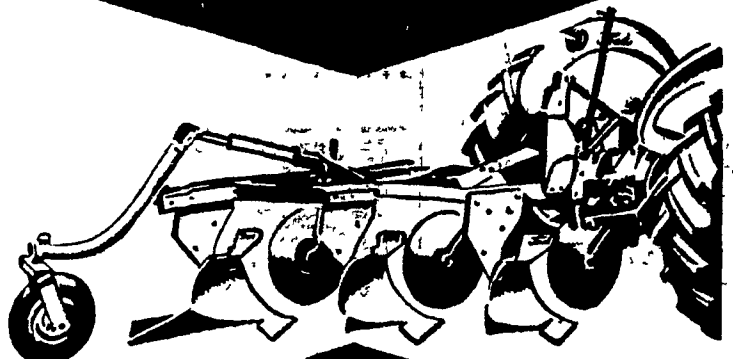
48 Cows — 10 Bred and 21 Open Heifers
A very productive herd of good, solid cattle. Top bulls represented. A good group of heifers in sale. Herd started in 1921. Profitable cattle.

For Catalogs Write:

BUZZ GAREY

100 Walnut Lane, Box B, Morrisville, Pa.
(215) 295-6664

BRAWNY... but never throw their weight around



FORD
SEMI-MOUNTED
MOLDBOARD PLOWS

ALLEN H. MATZ, INC.

Denver — New Holland