

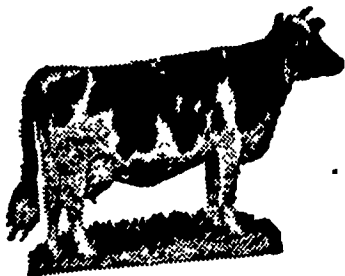
# PUBLIC SALE

3 1/2 miles East of Mt. Joy, 3 1/2 miles West of Manheim, 1 mile West of Sporting Hill, located between East Fairview and Eirsmens Mennonite Churches, Rapho Twp., Lancaster Co., Penna.

**TUESDAY, FEB. 28, 1967**  
12:30 P.M.

## COMPLETE DISPERSAL

— of —  
REGISTERED AND  
GRADE HOLSTEINS



**38 Head 38**

32 milk cows of which 7 are registered. Several nice Sequoia Ideal Jo daughters. Model Ranger daughter milking 75 lb. Cows in this herd have milked up to 90 lb. and first calf heifers up to 60 lb.

4 animals due in February and March.  
10 due in July and August.  
6 grade bred heifers.

Butterfat test from the dairy 3.5 to 3.8 this past year.

12 years of A.B.C. breeding.

Certified and Accredited, Charts furnished day of sale.

Aucts. note — Looking for good cows and good udders with plenty of milk — Don't miss this sale.

Sale held under cover. Terms by  
**ABEL BALMER**

J. Everett Kreider - 284-4517  
Carl Diller - 464-2233  
Auctioneers and Sales Managers

# PUBLIC SALE

OF STOCK,  
IMPLEMENTS & SOME HOUSEHOLD GOODS

To Be Held  
**WEDNESDAY, MARCH 1, 1967**  
At R. D. 1, Mount Joy

Located on road from Mount Joy to Donegal Springs on Carmany Farm. Off Route 230 about 2 miles south of Rheems. From Mt. Joy take Donegal Spring Road and follow to sale. 2 miles from Crossroads Church.

6 head of Mules — acclimated and well broken. 1 pr. 9 yr. old, 1 black, 1 bay, weighing 3200; 1 pr. black mare mules, 7 yrs. old, weighing 3000; 1 pr. black mules 7 & 8 yrs. old, weighing 2700. These are 6 very good mules.

28 milk cows, 1 bull. Some fresh by day of sale, some fall freshening. TB & blood tested. Health charts will be furnished day of sale.

## IMPLEMENTS

Farmall M Tractor with 3 bottom disk plow; AC #45 with cultivator, tobacco hoers & heat hood. Both tractors in good condition. 3 bottom AC plow; AC forage harvester with row crop attachment; 7' V type International Tractor mower; side delivery rake - 4 bar; NH #77 pickup baler with engine; Hershey tobacco planter on rubber; McCormick 28 disk harrow; 4 section Int. spring harrow; 3 section spring harrow; steel land roller; wooden land roller; cultipacker; 2 rubber tired wagons with 16' beds & sideboards; 4 horse wagon with flats; 4 tobacco wagons with ladders, 3-20, 1-22; hobsled with 2 horse wagon bed; New Idea tractor spreader; New Idea horse spreader; 13 disk Ontario fertilizer & grain drill; 3 riding cultivators; 2 wired 3 horse plows; horse cultivator; score; 2 McCormick Deering horse mowers; McCormick Deering double row horse drawn corn planter; corn sheller with motor; hammermill; grindstone; 2 rubber tired feed carts; dump sled; air compressor; Minnick tobacco presses; wheel barrows; log chains; cow chains; forks; shovels; picks; digging irons; sledge hammers; saws; bench vise; single double & triple trees; collars; bridles; fly nets; 2 sets harness; front gears; breast chains & jockey sticks; 16 more or less, ear corn.

10-qt milk cooler; 3 Hinman milking units with motor & vacuum pump; 24h cocks & piping for 25 cows; 28-85 lb. milk cans; milk buckets; strainers; elec. water heater for milk house.

4 Duo Therm Oil Heaters — 1 lrg., 1 small, 2 with elec. fan; 50 gal. elec. water heater; 12x15 rug; lrg. elec. roaster; elec. percolator; steam irons; lrg. extension table with 7 boards; extension table with 2 boards; rocking chairs; end tables; coffee table; washstand tables; table lamps; picture frames; comforts; baby coach; stroller; child's reed rocker; car bed; mattress; bird cage; kinsolium; bottle capper; meat hooks; cutting bench; lrg. iron kettle for furnace; dishes; silverware; lrg. iron skillet; iron pot; ladles, 1 with holes; pots; pans; 1, 4, & 6 gal. crocks; jugs, and a lot of other articles too numerous to mention.

Sale to start at 11 a.m. when conditions will be made known by

**ENOS H. WEIDMAN**

Order of Sale — small tools, household goods, implements, dairy equipment, cows and mules.

Seller will not be responsible for accidents day of Sale.

Refreshments will be served by Friendship Circle of Reich's

E. C. Church  
Dupes & Gerberich, Auctioneers  
S. Kraybill & P. Miller, Clerks

## Have You Heard?

(Continued from Page 15)

using a commercial preparation. Prevent future white spotting by protecting wood surfaces from moisture, alcohol and heat.

Perfect Soft-Cooked Eggs Use enough water to cover the egg and use same amount

each time you soft cook eggs. Be sure water is at same temperature or rate of boil each time.

Keep eggs at constant temperature in the refrigerator. Eggs equal in size should be done at the same time. The larger the egg, the longer it

should be in the water.

Vary the 3 1/2-minute cooking time by 15 to 30 seconds to suit individual preference.

Shop For Community As Well As House

A good place to live means more than a structurally sound house.

Neighborhood should be developed as a complete community offering activity outlets for adults and children.

Community needs adequate and easily accessible schools, libraries, playgrounds, parks, grocery and specialty stores, police and fire protection, and special services for particular family needs.

Quality of the facilities and their ability to serve people's needs is an important factor to consider when deciding on a place to live.

Lightning moves 30,000 times as fast as a bullet.

Among the English language's many puzzling words is "economy"—which means the large size in soap flakes and the small size in automobiles.

## Complete Machinery Dispersal

for King Farms Co.

**Wednesday, March 1st at 9:30 A.M.**

Located in Bucks County, Pa. on Bordentown-Ferry Road opposite Pennsbury Inn, just east of Tullytown Boro.

30 TRACTORS — TRUCK FARMING FIELD EQUIPMENT — PACK HOUSE LINES — LIKENS PRODUCE FIELD LOADER — PLUS CROPLAND MACHINERY, ETC.

Terms: Cash sale day. Immediate possession. No Confirmation. All Sell Without Reserve.

Blizzard postponement date will be Friday, March 3rd. For more detailed listing contact:

**BROWN BROS.**

66 W. State St.  
Doylestown, Pa. 348-4072

MEMBERS AUCTIONEERS' ASSOCIATION

# PUBLIC SALE

— of —  
**Farm Equipment**

**SATURDAY, FEB. 25, 1967**

6 miles south of Lancaster, 2 miles south of New Danville, on Run Valley Road, Lancaster County, Pa.

JOHN DEERE 60 WITH 800 HITCH AND FRONT END WEIGHTS; JOHN DEERE CYCLONE A WITH LIVE HYDRAULIC; COCKSHUTT 30 TRACTOR.

Dumore Manure Loader and Snow Blade; John Deere #813 three bottom plow; John Deere JB 32 Disc Harrow; John Deere 3 section Spring Harrow; Cultipacker; Cultivator (2 row for J.D. A or B tractor); Spike Harrow J.D.; John Deere 246 Corn Planter with Sprayer; John Deere FF Grain Drill, 16 foot with hand seeding attachment; New Idea 101 Fertilizer Distributor; 250 gallon high pressure Field Sprayer with boom; Twindraulic Weed Sprayer; NEW IDEA FLAIL MOWER CONDITIONER; John Deere #5 Mower; New Holland #55 Rake; John Deere #24T Baler with ejector; Hartzell 36 inch Hay Fan; PTO John Deere 12A Combine; 4 sections of Hay Dryer ducts; Fox Forage Harvester with motor (corn and windrow pick-up); 680 New Holland Forage Blower with 33 feet of pipe; Even-Flo Silage Distributor; John Deere Model N Manure Spreader; John Deere 1064 Wagon with bed and sides for Bale Thrower; New Holland Wagon with Pick unloading forage box (high sides); Flat Wagon with rubber tires; Lincoln Weldenpower (200 amp. and 5KW); 16 ft. Dultmeier Grain Auger with 1/2 horse motor; 16 ft. Cardinal Grain Elevator with 1/2 horse motor; 24 ft. Bale Elevator; Wooden Feed Truck; Steel Feed Truck; 11x38 Tractor Tire; Electric Fly sprayer; Tractor Chains for 38 wheel; Iron Wagon Wheels; Platform scales; Bag Wagon; Log Chains; Cow Chains; Barn Desk; Bags; Rope and Pulleys; 3 bale Balei Twine; Cyclone Seeder; Barshear Plow; Shovel Harrow; Wire Fence; Battery-Charger; Air-Congressor; Paint Spray Gun; 250 gal. steel Tank; Plastic Pipe; 3 Cow Mats; Stewart Cow Clippers; 3/4 horse Electric Motor; 2 hole Corn Sheller; Heavy Axle and wheels; Sleigh; Wooden Shaking Fork; Forks; Shovels; Brooms; Tractor Saw buck; Fruit and Extension Ladders; Bags; 2" row marker; International Electric Fence; 1 and 5 Ton hydraulic Jacks; Handy man Jack; Grindstone; Express wagon; Tools and many other articles too numerous to mention.

59 TON FIRST, 32 TON SECOND AND THIRD CUTTING ALFALFA HAY; 25 TON STRAW; 625 BU. BARLEY.

1949 3/4 TON INTERNATIONAL PICK-UP TRUCK  
1961 4 DR. FALCON, 1966 COMET, 4 DR.

## MILK HOUSE EQUIPMENT

300 GAL. DIRECT EXPANSION JAMESWAY MILK TANK with 2 hr. compressor; DeLaval #48 Milker Pump and Line for 36 Head; DeLaval #54 Milker Pump (2 units latest model); 2 DeLaval Milker Units (sate type pail) extra milker pail and cover; Stainless Steel Tank Strainer; other strainer and pails; Hot water Heater; Milk cans; milk Scales.

## POULTRY EQUIPMENT

6 Range Shelters; Electric and Coal Brooders; Poultry Water Pans etc.; chicken crates.

## HOUSEHOLD ITEMS AND ANTIQUES

China Closet; Combination Book Case and Desk; small tables; Rockers; Bench; bureau and bed; Cedar Chest; old Wood Box; Peck measure; dishes; some antiques; tub; cot; arm chair; chair; vanity set; bedside stand; Irons.

Sale at 11:00 a.m.

**LABAN and MIRIAM BYERS**

Auctioneers:  
Carl Diller, 464-2233  
J. EVERETT KREIDER 284-4517

Lunch by New Danville Fire Co.

## Public Auction

COMPLETE DISPERSAL  
OF LIVESTOCK, FARM  
EQUIPMENT & CROPS  
Tues., February 21, 1967  
at 10:30 A.M.

Located on the premises, 3 miles southwest of West Chester off Route #52. (Watch for sale arrows on Route #52).

38 Head of Holstein Dairy Cattle

THREE TRACTORS: Ford Major dsl., Oliver '88' gas, J.D. 'A' tractor. Included in this auction is a full line of modern machinery. Dairying equipment consists of a 300 gal. Esco bulk milk tank, Dr. Walker approved, 2 Jamesway stable cleaners and all other equipment for dairying.

3 Ford trucks. CROPS: 300 bales straw, 10 ton ear corn, 15' corn silage.

Lunch on the grounds  
Full particulars later

**DONALD COLEMAN, Owner**

L. Robert Flame, Auctioneer  
Box 128, Exton, Pa. 19341  
Phone: 215-363-7379

## TWO DAY SALE

Complete Dispersal of  
"Bonnie Blink Farm"

MARCH 14 —

Cattle  
Milking Equipment

MARCH 17 —

Machinery, Crops  
TIME: 11 A.M. SHARP

One mile south of Route 30 on Route 100 at Exton, Chester Co., Pa.

100—Holstein Dairy Cows—100 Registered and grade, high quality cows, young. Cows milking up to 110 lb. per day. Calfhood vaccinated and home raised. One of the finest herds ever to be sold at auction, consisting of Ivanhoe, Cochran General, Sequoia, Admiral Triumph, ABC & Curtiss breeding. All cows tested within 30 days for interstate shipment.

A full line of milking equipment, modern farm machinery and crops. Six tractors, J.D., including "4010"; Esco — 650 gal. bulk milk tank, Dr. Walker app.; and a pipeline dumping station.

Full particulars later  
Write Auctioneer for complete listing.

Lunch on grounds  
**WM. E. PARRY, JR., Owner**  
L. Robert Flame, Auct.  
Box 128, Exton, Pa. 19341  
Phone: 215-363-7379