

4-H NEWS

SOIL STUDY FEATURED AT CONSERVATION CLUB

Talks, a demonstration and a film on soil highlighted a meeting Friday evening of the Northern Lancaster 4-H Soil and Water Conservation Club at the home of Aaron Z Stauffer, Ephrata R1.

The demonstration, by Jeffrey and Ricky Pfautz, Stevens R1, was given in conjunction with a talk by Curtis Horst, New Holland R1, on the

Forcing Bulbs

Bulbs forced in winter in the home are chiefly the hardy, spring-flowering types such as tulip, hyacinth, daffodil, crocus, and snowdrops. All hardy bulbs need a low temperature or cold treatment to induce flowering says Robert Nuss, extension ornamental horticulturist at Penn State University. The cold treatment is necessary to break the dormancy and stimulate the flower bud into growth. Subsequent warm temperature will induce the bulbs to bloom.

The only reason a great many families don't own an elephant is that they have never been offered an elephant for \$1 down and \$1 a week.

Kent R. Ferrell, Jr.
Auctioneers
John H. O'Neill

PUBLIC AUCTION DISPERSAL SALE OF REGISTERED AND GRADE HOLSTEIN DAIRY CATTLE, FARM MACHINERY & FEED

The undersigned, discontinuing the dairy business, will sell the following on the farm located at Crother's Corner at the intersection of Post and Hopewell Roads, 3 mi. south of Rising Sun (via Md. Rte. #276) in Cecil Co., Md., on TUES., FEBRUARY 21, 1967 AT 11:00 A.M. (EST)

25 HOLSTEIN CATTLE: 20 registered, cattle featuring Zeus, Ivanhoe, Pabst Leader, Baron Aim and Una breeding. Five grade artificially bred cows. Several fresh and close springing cows — balance in full flow of lactation. T.B. Accredited, Certified Bangs Free, and tested within 30 days for out of state shipment. This herd, until recently, has been on DHIA and HIR test with dams showing over 16,000 lbs. of milk and over 500 lbs. of fat. Seven Holstein heifers — 3 mos. to one year. Milk base will be sold.

FARM MACHINERY: Farmall H tractor, Oliver 3x14" drag plow on rubber, Int'l. disc harrow, Int'l. corn planter, Oliver disc grain drill, wheel barrow seeder, Int'l. tractor mower 7 ft., cord wood saw, farm wagon with hay rack, New Idea manure spreader, Badger 8 ton forage wagon, J. D. hay fluffer, 14 disc Ontario grain drill, New Holland mower and hay conditioner, Case S.D. rake, J.D. 214T baler with bale thrower, Int'l. 9 ft. cultipacker, Dunham 8 ft. cultimulcher, Int'l. mounted corn planter, electric fence controllers, 3 Surge milkers, dairy strainers and supplies, miscellaneous items.

FEED: approximately 700 bales of clover and alfalfa hay.

TERMS - - - CASH

Lunch rights reserved by owners.

Not responsible for accidents on day of sale.

MR. & MRS.

JOSEPH T. AYERS, Owners

Port Deposit, Md.

Phone: 658-5879

ABERDEEN SALES CO.

Sales Managers

B. B. Preston, Clerk

'Size of Soil Particles.'

Ephrata vocational agriculture teacher, Charles Ackley spoke on Soil Texture. A film, 'to Conserve Our Heritage,' at 7:30 p.m., will be at the home of Dr. Paul Schantz, Ephrata R1.

Named to a fund raising Ephrata R1.

committee to help finance field trips were Melvin Wise, Phillip and Calvin Zimmerman, all of Ephrata R1.

The next club meeting, scheduled for Friday, Feb. 17, at 7:30 p.m., will be at the home of Dr. Paul Schantz, Ephrata R1.

PUBLIC SALE

Located 1 mile west of Route 896, and 1/2 mile west of Georgetown, Bart Twp., Lancaster Co., Penna.

**SATURDAY,
FEB. 18, 1967, 11 A.M.**

700 Case (1150 hrs.) 3-16" triphottom plows (1 yr.). 300 Case with manure loader, Farmall Super A. Cults., tobacco hoers, plow, wood saw and Holland transplanter. New Holland wire tie baler, Case 7 ft. mower, New Idea side rake, Cunningham crimper, Massey Harris 7 ft. combine with motor, AC model 200 wheel disc harrow, Dunham cultipacker, 3 section harrow, Oliver 13 disc drill, weeder, Case cornplanter (eagle hitch), elevator, New Idea No. 8 spreader, 2 rubber tired wagons with flat beds, New Idea iron wheel wagon, 5,000 tobacco lath, air compressor.

**30 TON CORN — 20 TON HAY
10 TON STRAW**

75 bu. wheat, sawmill lumber, tomato baskets, elec. corn sheller, platform scales, feed cart, wheelbarrow, 2 Stewart clippers, emory wheel, tractor chains, clover seed sower, hog troughs and feeders, fly fogger, pot belly stove, bag cart, elec. incubator, tools, many other articles.

HOUSEHOLD GOODS

Living room suite, table lamps, 2 iron beds and mattresses, old beds, dishes, high chair, jugs, crocks, jars, extension table, ice cream freezer.

ANTIQUES

2 dry sinks, full toilet set, pitcher and bowl, old rocker crib, old fashioned bureau and washstand, organ, dough tray, large and small copper kettle, 2 mantle clocks and alarm clock.

3 butchering kettles No. 32 grinder, stuffer & stirrers, 4 ladels and fork, 75 heavy chickens, 7 ewes and 1 buck.

Terms by

JOHN D. ERB

Kreider & Diller, Aucts.

Lunch by the Georgetown Methodist Church.

PUBLIC SALE

1/2 Mile South of The Buck and 1/2 mile west of Route 272, 12 miles south of Lancaster, Drumore Twp., Lancaster Co., Penna.

FRIDAY, FEB. 17, 1967

12 O'CLOCK NOON

FARM EQUIPMENT, TRUCKS, TRAILERS

6 TRACTORS

2 MF85 Diesel Tractors (61 & 62) fully equipped and both high arch — 1 wide front end and 1 row crop, 1 Ferguson 20, 2 AC-WC tractors, 1 AC-B tractor with cults., mower and wood saw. MF-744 bottom 14 inch plow, New Holland 77 Super PTO baler with hyd. bale control, Massey Harris self-propelled corn picker (6 cylinder), Massey Ferguson 3 pt. wheel rake, AC combine with bin (PTO), AC transport 32 Disc harrow, John Deere Kilheffer 26 disc heavy duty offset, 5 rubber tired wagons 3 to seven ton. 2 Little Giant grain boxes, unit type cornplanter on tool bar, JD 3 pt. cultivators, 2 manure loaders, New Idea No. 501 and Dumore with bucket and fork.

1 Oliver manure spreader, 1 Oliver orchard Sprayer, Oliver high clearance tricycle type tobacco sprayer, Holland 2 row transplanter on rubber, 4 sets of double tobacco ladders, 10,000 tobacco lath, 2 Minnich tobacco presses, JD grain drill, Lavelle elevator, New Holland blower & pipe, IHC cornbinder, 20 ft. aluminum elevator (gas or electric motor), 133-Case twine tie PTO baler, 4 bottom 14 inch JD plow on rubber (hyd), JD-40 disc transport, side dresser for 4 row cultivator, New blower and pipe, IHC cornbinder, AC rear mounted deep tiller, spring harrow, 3-16 hole hog feeders, hog troughs, belts, chains, tools, 2,000 tomato baskets, Massey Harris 4 cylinder cornpicker for parts.

50 TONS CORN — HAY AND STRAW

1960 C850 Ford with bubble sleeper and 8 speed Road Ranger fully equipped. 1951 — 450 GMC W tag with 16 ft. flat bed with hyd. dump. 1953 Dodge 1/2 ton pick-up. 1952 Chevrolet 1/2 ton pick-up. 1958 Fruehauf Stainless Steel Refer van with spring suspension, side door & tandem axle. 1956 Trailmobile 33 ft. flat trailer 4 ft. sides, bows, tarp and grain pockets, tandem axle. 1953 Fruehauf single axle van trailer. 18 ft. flat bed with plow and high sides. Tires, wheels, chains, jacks, many other articles too numerous to mention.

Terms by

H. H. MYLIN

Kreider & Diller, Aucts.

Lunch Available.

PUBLIC SALE

3 1/2 miles East of Mt. Joy, 3 1/2 miles West of Manheim, 1 mile West of Sporting Hill, located between East Fairview and Eirsmens Mennonite Churches, Rapho Twp., Lancaster Co., Penna.

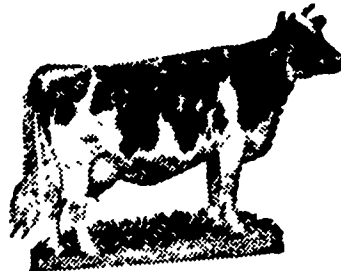
TUESDAY, FEB. 28, 1967

12:30 P.M.

COMPLETE DISPERSAL

— of —

**REGISTERED AND
GRADE HOLSTEINS**



38 Head 38

32 milk cows of which 7 are registered. Several nice Sequoia Ideal Jo daughters. Model Ranger daughter milking 75 lb. Cows in this herd have milked up to 90 lb. and first calf heifers up to 60 lb.

4 animals due in February and March.

10 due in July and August.

6 grade bred heifers.

Butterfat test from the dairy 3.5 to 3.8 this past year.

12 years of A.B.C. breeding.

Certified and Accredited, Charts furnished day of sale.

Aucts. note — Looking for good cows and good udders with plenty of milk — Don't miss this sale.

Sale held under cover.

Terms by

ABEL BALMER

J. Everett Kreider - 284-4517

Carl Diller - 464-2233

Auctioneers and Sales Managers

PUBLIC SALE

SATURDAY, FEB. 18, 1967

Located 12 miles East of Lancaster, 2 miles West of Gap, First farm south of Route 30, from Kinzer, Lanc. Co., Penna.

LIVESTOCK

Complete young stock dispersal featuring GANEWS BLACK TIGER (yearling bull) and his 14 sisters. Tiger's dam is Pataja Dean Sylvia, Very Good with 5-ly 303da., 16,652m 3.7%, 618 fat. Sire is Dibble Ideal Dictator.

Mostly Bred heifers due late summer and fall with dams records to 17,357 pounds of milk and 882 pounds of butterfat.

Milk cows were sold privately but all salable heifers that have never freshened will sell.

FARM EQUIPMENT

Farmall "400" tractor, fast hitch with 3-bottom 14" plow; Farmall "200" tractor fast hitch, with cultivators and manure loader with Shar-Lynn pump. McD corn planter, like new; McD 7' grass mower.

New Holland hopper blower with 50' pipe; New Holland corn drag; Myers sprayer.

McD heavy-duty disc harrow; Hawk-built liquid side spreader; Ontario 13 disc grain drill used 2 years; Dunham cultipacker; ensilage wagon with web; three flat wagons and beds; Smoker 26' elevator.

Minnich tobacco press; Poultry equipment includes, 5 nests and 6 feeders; 12' x 14' brooder house.

500 BUSHEL EAR CORN

ACORN BARN CLEANER with cable for 22 cows

DAIRYING EQUIPMENT — DeLaval 2-unit milk-er; DeLaval pump; DeLaval 60 gallon water heater; Stainless steel wash tubs; etc.

Sale at 12:00 noon

EVERETT R. NEWSWANGER

Lunch Available

Henry Kettering, Pedigrees

Abe Diffenbach, Auctioneer