

## Drought Blamed For Severe 1966 Pa. Crop Drop

**HARRISBURG** — Production of all crops in the state — with the notable exception of wheat, barley and rye — was sharply curtailed by this year's drought, according to the Pennsylvania Crop Reporting Service.

Adequate moisture in the spring and hot, dry weather for ripening and harvest were ideal for winter grains. Wheat had a record yield of 36 bushels per acre, one bushel more than the previous high. The barley yield of 58 bushels per acre was another record, topping the previous high by seven bushels. Rye produced 29 bushels per acre, just one bushel short of the record.

Production of all three were up from the previous year, with the wheat crop totaling 14,400,000 bushels, barley 9,048,000 bushels and rye 551,000 bushels.

From there on production of the state's other crops dropped in 1966.

The corn yield was 49 bushels per acre, 19 bushels less than in 1965 while total production of 32,928,000 bushels was the smallest since 1930.

### Mail Box Market

(Continued from Page 15)

For Sale—32 hay racks, will fit any comfort stalls. Call 733-8297 Ephrata, Pa.

Wanted — Grade Angus baby calves, male. Ph 569-1787

For Sale—Pups—Labrador & Border Collie Cross. Good all purpose farm dog. Easy to train. \$10 for males, \$5 for females. Elwood Bucknell, Box 133, R3, Oxford, Pa.

## Robert K. Rohrer

**Bulldozing - Grading  
Patz Sales & Service**

**Barn Cleaners - Silo  
Unloaders - Cattle Feeders**

Quarryville, R. D. 1  
Hensel 548-2559

**The Money  
Crop**

**HAYMOR  
ALFALFA**

Fresh seed mixed and  
Inoculated (FREE)

Save with REIST'S Seeds

**Reist Seed Co.**

Mount Joy, Pa. Ph. 653-4121

Finest Quality Seeds

(Since 1925)

## New Orchard Spray Film Released By Esso

A new sound-and-color film on the use of spray oils to control insect damage to fruit

weight was 16 percent less than a year earlier, with yield averaging 162 cwt. per acre, compared to 198 cwt. in 1965. Stocks of Pennsylvania potatoes in the hands of growers, dealers and chippers on Dec. 1 totaled 4,000,000 cwt., 11 percent less than on the same date last year.

The tobacco crop totaled 41,875,000 pounds, 18 percent less than in 1965. Yield per acre was 1,675 pounds compared to 1,900 pounds a year ago.

Corn cut for silage yielded only eight tons per acre, three tons less than last year.

Hay production totaled 3,426,000 tons, down 4 percent from last year, with yields averaging 1.65 tons per acre compared to 1.71 tons in 1965.

Oats yielded 34 bushels per acre compared to 47 bushels last year, with total production of 17,000,000 bushels, 7,487,000 bushels less than a year earlier.

Production of vegetables for fresh markets and for processing, including strawberries, was down 20 percent from a year earlier. Potato production of 6,316,000 hundred-

trees has been prepared for Towson, Maryland, 21203. orchard owners and their organizations by Humble Oil & Refining Company, largest domestic oil refiner and marketer. Several of the country's leading entomologists cooperated with Humble and its principal scientific affiliate in making the 16-mm. motion picture. In the Middle Atlantic states, it will be available on a free loan basis from the Industrial Business Department of Humble's Eastern Esso Region headquarters, 7720 York Road,

Humble's new motion picture explains when and how spray oils are applied, the insects that can be controlled through use of the company's line of Orchex products, advantages and quality characteristics of spray oils, and the fruits for which their use is recommended.

## ATTENTION!

**Reserve Tuesday, January 17 and Wednesday, January 18 for Brewer's Dairy Complete 2-day Dispersal at Coudersport, Pa., Potter County.**

Tuesday, January 17 — selling 142 Head Registered and High-grade Holsteins — 1966 official D.H.I.A. records 15,067 milk 539 fat — individual records to 23,057 milk, 844 fat — blood and T.B. tested, charts furnished — catalogues — immediate interstate testing done.

Wednesday, January 18 — selling most new and complete line of up-to-date machinery often sold at auction — 4 tractors — self-propelled windrower — self-propelled combine — self-unloading wagon — trucks and numerous other nearly new items not mentioned. Produce — 300 tons good mixed hay — 2 silos corn silage.

**Owners: Edgar and Pat Brewer**

Coudersport, Pa.  
Potter County

For complete information write or phone:  
Sale Mgr.: D. O. Rockwell, Troy, Pa. 16947, Ph. 717-297-3460

Carl Diller and Everett Kreider, Aucts., Lancaster, Pa.

## FARM FOR SALE

550 acres — New Dairy Barn — 84 tie stalls — pipeline milker — 2 bulk tanks — boxstalls — new loose housing shed — newly remodeled 10 room home, tenant house — natural gas heat — real good water supply — cannot be appreciated until seen.

Sale of Real Estate — Contact owners  
(Farm shown by appointment only)

## Complete Dispersal

— of —

**REGISTERED AND GRADE  
HOLSTEINS**

Located 6 miles South of Lancaster along Rt. 272

**FRIDAY, JANUARY 20, 1967**

Certified, accredited, vaccinated (30 day tested for out-of-state) D.H.I.A. records.

**65 HEAD 65**

48 cows, 1st and 2nd calf heifers of which 25 are registered. 6 bred heifers, 11 younger heifers. Fresh and close springers, 8 due in the spring, 16 due for summer, 12 bred back for fall.

Included in this sale: KENEVELYN SILVER ROCKET DTR. — 3 yr. 9 mo., 348d., 18,000M. 612F.; ERNSDALE R.A. WAYNE DTR. — 5 yr. 5 mo., 363d., 17,258M. 664F.; RIVER ROAD TIDY SEGIS DTR. — 3 yrs. 3 mo., 343d., 13,828M. 597F.; MAPLE BEND DEAN KING POSCH DTR. — 8 yr., 363d., 15,222M. 573F.; WINTERTHUR IDOL FLARE LEANDER DTR. — 2 yr. 2 mo., 353d., 13,077M. 456F.

Selling in this dispersal are some well bred grade cows with records up to 19,135 lbs. of milk. A high percentage of young cows here with the dams records as high as 21,000M. and 800F. MANY OF THE 2 YEAR OLDS HAVE MILKED 45 TO 70 LBS. DAY. SIRES REPRESENTED IN THIS DISPERSAL ARE FROM ATLANTIC BREEDERS COOP., A.B.S. and N.E.B.A.

Be sure to attend as they must be seen to be appreciated. Dairy equipment including S.P. 11 Surge milker pump, (1) 50 lb. pail, (2) 45 lb. pails, (1) 16 qt. S.S. bucket with cover.

For catalog write: Carl Diller, 1101 Beaver Valley Pike, Lancaster, Pa. Sale under cover.

Sale at 12:30 Sharp

by **PAUL CAMPBELL**

Diller and Kreider, Aucts. & Sale Mgrs.

464-2233 — 284-4517

**FULL LINE OF FARM EQUIPMENT SELLING  
FEBRUARY 11, 1967**

## BUY NOW AND SAVE Take Advantage of OUR WINTER DISCOUNTS

WINTER FERTILIZERS

NEED NOT BE TAKEN BEFORE FEBRUARY

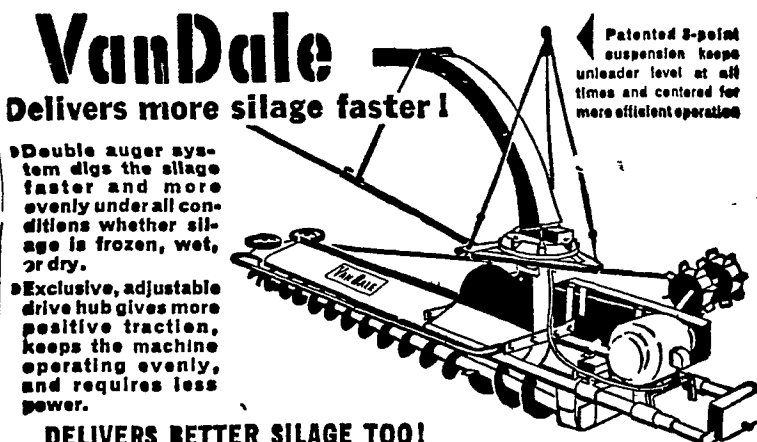
Early Payment will SAVE on Spring Delivered Goods

Call 392-4963 or 392-0374 for More Information

**ORGANIC PLANT FOOD CO.**

MFRS OF COMMERCIAL FERTILIZERS  
GROFFTOWN RD. Next to Waterworks

## Get the BIG silo unloader value!



**DELIVERS BETTER SILAGE TOO!**

The double augers, operating in conjunction with the patented V-paddle impellers, dig the silage, mixes it thoroughly, and then throws it down the chute. Your cows and cattle get good, palatable silage... not a powdered mash as often happens with unloaders using blowers.

**TWO SIZES:**

Standard—for silos 16' to 18'  
Heavy Duty—for silos 18' to 24'

**CALEB M. WENGER**

R. D. 1, QUARRYVILLE, PA.  
Drumore Center KI 8-2116

WRITE OR PHONE US  
FOR COMPLETE INFORMATION AND PRICES.

## PUBLIC SALE

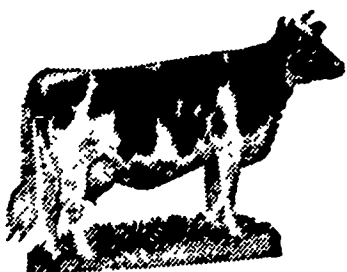
**BLACK AND WHITE  
HOLSTEIN FARM**

**DAIRY COW SALE PAVILION**

along Rt. 230 Bypass directly across from the  
Comet Outdoor Theatre, just west of Lancaster.

**FRIDAY, JAN. 20, 1967**

7:30 P.M.



**40 Canadian Cows.**

**Some with official  
ROP records.**

Fresh Day of Sale or  
right ready to fresh

2 years credit terms. Credit can be arranged prior to sale.

**CHARLES C. MYERS, Owner**