

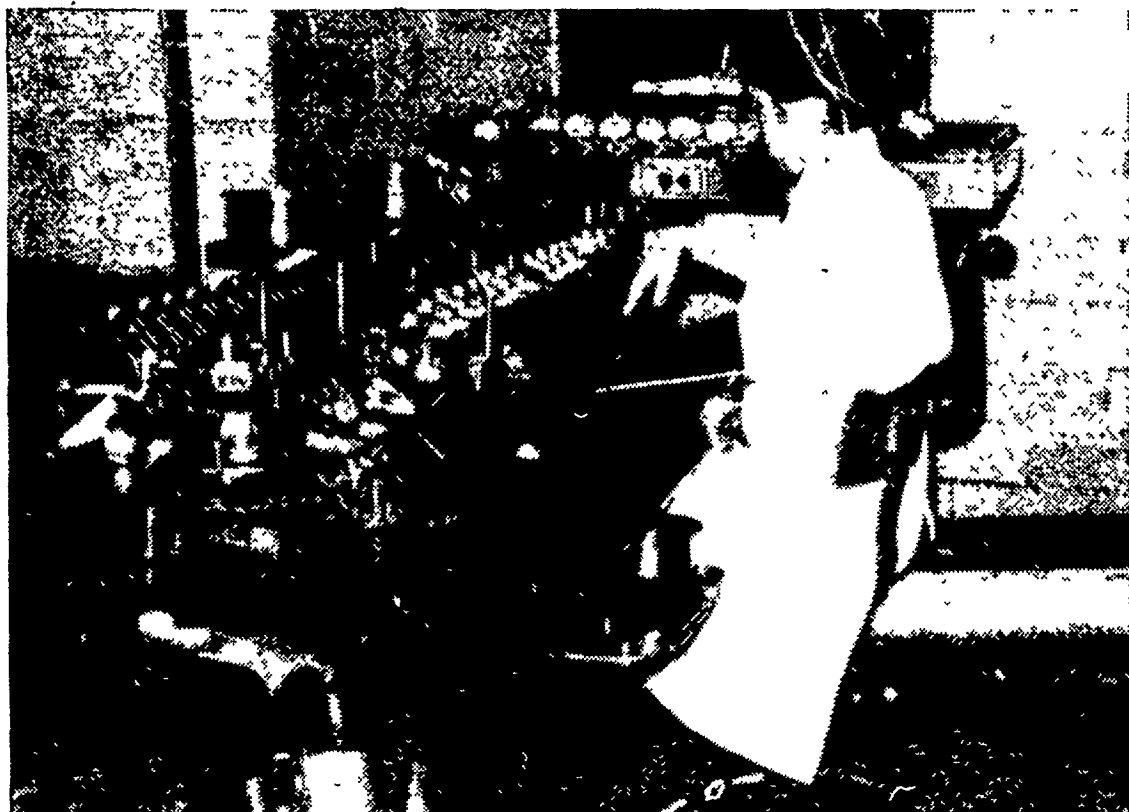
DEC 21 1966

Lancaster Farming

VOL. 12 NO. 3

Lancaster Farming, Saturday, December 17, 1966

\$2 Per Year



FIRST STOP FOR EGGS ON THE LIQUID ROUTE is at this 20-case-per-hour capacity egg breaking machine. Weaver employee Martha Rieff, shown operating the machine, checks the eggs as they pass by on an endless belt. If she spots one of undesirable quality, she trips that particular cup and rejects the contents. The other cups continue to a pre-determined tripping point and the eggs collected in a container.

L. F. Photo

Local Egg & Poultry Firm Operates Liquid Egg Plant

by Don Timmons

Frozen liquid eggs will have a definite place in egg marketing in the near future. That's the opinion of the management at Victor F. Weaver, Inc., New Holland egg and poultry firm.

In talking recently with Ben Burkholder, plant manager, and John Kennel, manager of company services, we learned that, although a breaking operation fits well into the total egg handling and marketing program at Weaver's, it must be managed very differently than other phases of the business.

In addition to the investment in special breaking and pasteurizing equipment, the operation required building a separate room, 30'x50', adjacent to the shell egg facilities. A positive pressure is maintained in the breaking room to help keep foreign material from entering as company personnel enter and leave the room.

An egg packing firm such as Weaver's can use this liquid egg outlet to upgrade the quality of its shell egg packs. Burkholder said he explained that while the quality demanded

for cartoned eggs limits the use of eggs with poor shell quality and eggs from older hens, a breaking plant can absorb eggs of this nature profitably. Ninety percent of Weaver's (Continued on Page 8)

17 County Herds Exceed 600 Lbs. Butterfat

Lancaster County dairy herds enrolled in the Red Rose Dairy Herd Improvement Association program completed another good testing year, association adviser Victor Plastow announced recently.

Seventeen herds have completed butterfat production records exceeding 600 pounds, Plastow said, adding that no specific figures would be released until the association's annual banquet meeting. That affair is planned for noon, January 17, at the Dutch Town & Country Inn, Vintage.

This year's number of high-fat producers beats last year's total by one. But the county herd average of 485 pounds was one pound below last year's average.

County Poultry Association Names John H. Hess President For 1967

At a recent meeting of the board of directors of the Lancaster County Poultry Association, held in the Lancaster Farm Credit Building, John H. Hess of New Holland R2 was elected to head the association in the coming year. He succeeds Paul Heistand, Marietta R1.

Hess, a relative new-comer to the association, is well-known to most county poultrymen. He was elected to the board of directors at the poultry association's annual banquet in November. He has been associated with the New Holland Supply Company, New Holland, continuously since 1953, except for a brief period spent with the Eastern States store at New Holland. Hess is presently treasurer of New Holland Supply, and manages the company's sales.

Born and raised in Millersville, he has resided in New

Holland for the past 26 years. The Hess' have three children, one taking graduate work at West Virginia University, Morgantown, W. Va., a daughter at Eastern Mennonite College at Harrisonburg, Virginia, and a second son a student at Garden Spot Junior High School.

Other officers elected by the directors were secretary, John

(Continued on Page 9)

4-H Veal Production Program Is Launched

Members of 4-H dairy clubs in Lancaster County were informed last week that a new 4-H veal production program would be offered if enough youngsters in the county indicated interest. According to associate county agent Victor Plastow, this new club would not be limited to dairy club members, anyone between the ages of nine and nineteen will be eligible.

The only nearby county that now has such a program in operation is Lebanon, but it is hoped that, as the program develops, other counties will get interested and district roundups will be held.

"Veal production has a good profit potential, and is a practical youth project on many (Continued on Page 4)

Producers Co-Op Earnings Up 4.9%

Somewhat less than 20 percent of a planned attendance of 160 stockholders of the Producers Cooperative Exchange braved the county's first major snowfall Tuesday night to attend the Co-op's annual meeting, held at Hostetter's in Mount Joy.

General manager K. M. Souder reported the Exchange's dollar volume at \$4,692,438, up 4.9 percent over last year. Although the actual quantity of eggs handled was down 16 percent, at 92 million dozen, Souder said that for each dollar of sales, egg producers received 83.6 cents. This represented an increase of more than 2 1/2 cents over last year's returns to the producer, he added. Producers averaged 37.01 cents per dozen, an increase of eight cents over last year's average.

In discussing the loss of egg volume, Souder pointed out that this followed two years of steady gain in eggs handled — 16 percent in (Continued on Page 4)

SWCD To Study Long Range Plan

The Lancaster County Soil & Water Conservation District directors and cooperating agencies, received copies of county resource data assembled by Soil Conservation Service. In distributing this material, work unit conservationist Oival Bass told the directors they would find it useful in developing long range conservation goals for Lancaster County. He showed them examples of such goals that had been published by other Districts.

Bass also suggested to the directors that an effective method of keeping their list of landowners up-to-date would be to get regular reports on all county land (Continued on Page 9)

T. M. Malin, Lancaster-York Area Vo-Ag Director To Retire Dec. 31

December 31st will mark the end of the year 1966. It will also mark the end of a career in agriculture and education that spanned 41 years, when Lancaster-York area vocational agriculture director Thomas M. Malin retires.

Malin, a native of Medina, Delaware County, came to York County in 1934 as a vocational agriculture teacher at the old Dillsburg High School. Three years later he was appointed county director for agricultural education.

It was not until 1942 that the Lancaster and York areas were combined under Malin's direction. Before that, Lancaster County vocational agriculture activities had been associated with those of Chester County.

Since Malin's administration began in 1937, schools

under his supervision have turned out what may be twice as many recognized outstanding boys as any comparable area in the state. Since 1937, these include: 35 American Farmer Degree recipients; 588 Keystone Degree winners; 31 state and two national FFA officers; 23 State or Regional Star Farmers; and 20 boys who competed in national FFA contests.

Malin is quick to add that this impressive record is due to the fine efforts of the voca- (Continued on Page 13)

Farm Calendar

December 20 — 2 p.m. & 7 p.m., Tobacco Meeting at Agway Warehouse, New Holland; subject, "Discussion of Handling 1966 Crop".

—7:30 p.m., Garden Spot Young-Adult Farmer Class—"Farm Engines—Part I". Principles of operation, maintenance, economics, at Garden Spot High School.

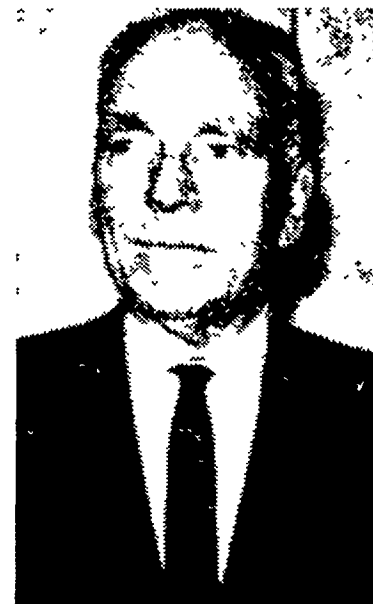
December 21 — 10 a.m. to 3 p.m., Penn State University Farm Income Tax program, at Met-Edison Bldg, Reading.

December 22 — 7:30 p.m., Ephrata Adult Farmer Class, "Irrigation—Water Laws", at Ephrata High School.



Temperatures for the five-day period, Saturday through Wednesday, are expected to average below the normal range of 39 to 25 degrees. Little day-to-day change is expected.

Precipitation is not expected to exceed 1/4-inch, occurring as showers about Monday or Tuesday.



Thomas M. Malin