

## Prevent Plant Winter Injury

Every winter many ornamental plants are damaged and sometimes completely killed by winter injury. If gardeners protect their plants much of this damage can be prevented, according to Robert F. Stevens, extension horticulturist at the University of Delaware.

Winter injury may be caused by excess loss of moisture, alternate freezing and thawing of the soil, stem girdling by animals, frost cracking and snow, sleet and hail.

Excess loss of moisture mainly damages broadleaf evergreen shrubs such as rhododendron, boxwood, Oregon holly, grape and Chinese holly. Sweeping winds and direct sunlight make the leaves lose water faster than the roots can take it up. The problem is particularly bad when the ground is frozen more than a few inches deep.

Gardeners can prevent excess moisture loss by planting susceptible broadleaf evergreens only in protected locations, Stevens points out. If the plants are already in an unprotected spot, put up a wind and sun screen of lath, snow fence, burlap or similar material, he advises. The screen need not extend entirely around the plants, but it should keep the sun and strong winds off. A mulch will also help prevent moisture loss damage.

Alternate freezing and thawing will heave plants out of the ground and often kill them. Heaving is usually a problem with shallow-rooted plants, perennial flowers or small shrubs and ground covers planted late in the fall with limited root growth. Mulching with leaf mold, pine needles, peat moss or similar materials will help keep the soil temperature more uniform and may prevent heaving damage.

Burlap protection will help prevent damage from snow and sleet. Stevens also advises tying up those plants that tend to bend open in the middle. For instance, Hicks yew and Greek juniper are often injured by heavy snow and sleet.

Meadow mice and rabbits frequently eat the bark from trees and shrubs causing considerable damage. A wire barrier of galvanized fine mesh hardware cloth installed around the trunk from about two feet high to just below the ground level effectively prevents animal damage.

This year the soil moisture

## Control Chickweed in Alfalfa and Clovers with Chloro IPC

Spray when temperatures range from 40 to 60 degrees.

Contact us for more information

**P. L. ROHRER & BRO., INC.**

SMOKETOWN  
Ph. 397-3539

is good and late watering will not be necessary except for plants under the eaves or in planters where rain does not reach. Plants in these locations need watering all winter, according to Stevens.

### ● Vintage

(Continued from Page 2)  
25-22.25.

CALVES 491 — Vealers mostly steady, some sales Cull and Utility steady to \$1 lower.

VEALERS — Choice 39-41.50, few 42-44, Good 34.50-38, Standard 32-35, Utility 28-32, Cull 23-27, 70-90 lbs. 18.50-24.50.

HOGS 181 — Barrows and Standard 33-35, Utility 27-32, Cull 22-28.

BARROWS AND GILTS — US 1-2 195-225 lbs. 22-22.60, US 1-3 180-245 lbs. 21.25-21.85, 2-3 240-260 lbs. 20-21.

SHEEP 50 — Woolled slaughter lambs steady to \$1 Higher.

WOOLED SLAUGHTER LAMBS — Choice 75-105 lbs. 25-27.50, Good 22-25.

SLAUGHTER EWES — Utility and Good 5.50-10.

### ● Lancaster

(Continued from Page 2)

CALVES 525 — Vealers mostly steady, Instances \$1 Lower.

VEALERS — Choice 40-42, Few 42.50-44, Good 37.50-40.50.

## COMPLETE DISPERSAL SALE

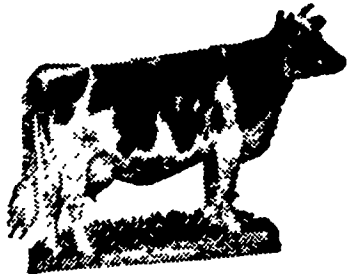
LOCATION ON THE JOHN ERB FARM

1/2 mile west of Georgetown (Rt. 896), 15 miles southeast of Lancaster, Pa.

SATURDAY, DEC. 10, 1966

34

Registered Holsteins



23 milking age,

1 bred heifer,

10 younger heifers

HEALTH — 30 day Bangs and T.B. tested, Vacc. (ready for out of state) inoculated against shipping fever.

D.H.I.A. Average 14,958m. 590f. 3.9%  
Classified in 1966

Most of the herd was originally from Christian K. Lapp, Gap, Pa.

Fountain Hill Regal Arleen and 6 offspring selling!

Fountain Hill Regal Arleen - Cl. "Good" 356d. 6y. 6m. 15,147m. 779f. 5.2% 7 lact. total 80,675m. 3,859f. 4.7%

"Nora" her G.P. Ivanhoe Dtr. 4y. 11m. 365d. 25,754m. 1,062f. 4.1% 3y. 8m. 369d. 24,113m. 943f. 3.8% 2y. 4m. 305d. 15,145m. 626f. 4.1%. Her Reflector Model calf sells.

"Lilac" G.P. 82 full sister to Nora - 4y. 5m. 315d. 16,692m. 685f. 4.1% 3y. 4m. 314d. 14,737m. 672f. 4.6% 2y. 3m. 335d. 11,676m. 534f. 4.5%

"Patsy" G.P. Master Cross dtr. of Arleen 5y. 11m. 336d. 19,479m. 825f. 4.2% Patsy's "Good" Triumph dtr. 2y. 3m. 349d. 15,227m. 643f. 4.2%, her April 1966 Milk and Honey Ivanhoe dtr. sells.

More Top Ivanhoes:

"Rose" V.G. 86 3y. 5m. 264d. 12,786m. 571f. 4.4% inc.

"Nell" G.P. 83 2y. 305d. 12,668m. 557f. 4.4%, her dam made 858f. 4.3%

"Flossy Fobes" G.P. 81 3y. 7m. 19,026m. 692f. 3.6%, will be fresh.

"Echo Nina" Good 3y. 305d. 15,518m. 629f. 4.1%

V.G. Sequoia Ideal Jo Dtr. 2y. 305d. 12,406m. 513f. 4.1%

8 sell from 700 to over 1,000 lbs. of fat.

9 sell from 500 to over 600 lbs. of fat.

9 cows have already milked from 80 to 103 lbs. a day. 9 dtrs. of Ivanhoe, others by Misty, Triumph, Sequoia, Lad, Master Cross, Regal Lucifer, etc.

This dispersal made necessary due to sale of the farm. Several additional top cows and heifers will be consigned to the sale including Springing daughter of Milk & Honey Ivanhoe from a dam whose first 3 records average 620 fat. 4.0% — "Reflector" daughter with over 14,000 at 1 year 11 months of age.

For catalogs write to Carl Diller, 1101 Beaver Valley Pike, Lanc., Pa.

Milking equipment, including Sputnick "Milk Porter", DeLaval Milkers, S.S. strainers.

SALE AT 12:30 P.M.

Sale by, HAROLD S. PROBST, Bart, Pa.

Diller, Kreider and Stoltzfus, Aucts. and Sale Mgrs.

### LEVEL VALLEY FARM COMPLETE DISPERSAL

CLARENCE L. KEENER  
FRIDAY, DECEMBER 9  
MANHEIM, PA.

At the farm located one mile from Manheim, Pa. Turn East off Rte. 72 at third traffic light south of Square at Manheim. Third farm on left behind asbestos plant. Watch for arrows.

#### 85 REGISTERED HOLSTEINS

12 Heifer calves — 5 Bred Heifers — 19 Open Heifers — 12 Heifer calves — 1 Herd sire). Bang's Certified, T.B. Accred. Calf Vacc., Eligible for immediate shipment anywhere.

1966 DHIR AVERAGE — 32 L. 17,337 M. 3.7% 639 FAT! THESE HIGH RECORD COWS ALL SELL!! 4 from 807 to 893 fat. 4 from 713 to 752 fat. 16 from 602 to 689 fat. 6 from 534 to 574 fat. 8 from 448 to 490 fat (Mostly as 2 yr. olds).

OUTSTANDING TYPE SELLING!! 11 "VG" cows sell 1 at 89; 1 at 88; 2 at 87; 1 at 86 pts. 18 "GP" cows sell — 2 at 84; 5 at 83; 5 at 82 pts. Many more would classify well now.

POPULAR BREEDING SELLS!! 6 by OSBORNDALE

IVANHOE — 4 by Hardon Farms Duke Aaggie — 3 by "Marquis" — 2 by Pride Admiral — 2 by Mooseheart Pioneer — 2 by Cochran General — 2 by Penstate Marksman Ref. and others.

TOP SERVICE SIRE REPRESENTED!! 9 bred to "Marquis" — 2 by Pride Admiral — 2 by Mooseheart Pioneer — 2 bred to "Star Man" 3 to Milk & Honey Ivanhoe — 3 to Howacres Ref. Model and others.

SEE THE PENNA. NEWS AND HOL. WORLD FOR COMPLETE DETAILS AND PICTURES.

THIS IS A TOP HERD WITH HIGH CLASSIFICATION, TERRIFIC PRODUCTION AND POPULAR BLOODLINES!!

MAKE YOUR PLANS NOW TO ATTEND!

Sale starts 11:30 A.M.

Lunch Available

Catalogs

Under Cover

Farm has been sold — Everything must go!

R. AUSTIN BACKUS INC.  
Sale Mgrs. & Auctioneers  
Mexico, N. Y.

CLARENCE L. KEENER  
Owner,  
Manheim, Penna.

PENNA. HOL. ASSOC.  
839 Benner Pike  
State College, Pa.

\*\*\*\*\*

## PUBLIC SALE

— of —

### LIVESTOCK, IMPLEMENTS AND HOUSEHOLD GOODS

To be held

SATURDAY, DEC. 10, 1966

R. D. 2 Palmyra, 1 1/2 miles east of Bachmansville, 1 1/2 miles southeast of Campbelltown.

30 Head of acclimated Feeder Steers around 800 lbs.; 50 Shoats 75-125 lbs.; 10 Brood Sows some with pigs by their side; 1 purebred Yorkshire Boar.

3/4 ton 56 Int. Truck & Rack; 1953 Chrysler Station Wagon with factory built motor, extra wheels & snow tires; 10-20 John Deere Tractor; John Deere A; S.C. Case Tractor & manure loader; John Deere plow 16" trip bottom; Oliver trailer plow; J.D. 3-section spring harrow; J.D. disc harrow; 2-10' cultipackers; Ford cornplanter 3 pt. - used 2 yrs.; 3 pt. Cultivator; Oliver grain & fert. drill; lime drill; #8 J.D. 7' mower; J.D. crimper; New Holland 66 baler; Smoker elevator 24'; 3 wagons w/16" beds; grain wagon; 2 New Idea Manure spreaders; New Idea corn picker; Case Harvester; Case silo blower w/pipe; unloader unit; grain elevator; auger; silage carts; hay rakes; hog feeders; hog troughs; chicken crates; feeders; nests; range shelters; 2 gas, 3 elec. brooder stoves; egg grader; egg washer; 300 gal. tank; milk house hot water heater; double wash tank; Marlow milker & pump; cattle clipper; cattle scratcher; hay; 20 ton straw; 25 tons corn; 400 bu. barley; some silage; 3' snow scraper; air compressor; Lombard chain saw; log chains; sub soiler; electric fences; locust posts; fireplace wood; emery grinder; 2 shot guns, 1 double bar. 12 gauge, 1 - 410 gauge; 18" Gil-Bilt Band Saw; 1 1/2 h.p. elec. induction motor-single phase; lot #60 honey cans.

Amara upright freezer - like new; Kelvinator 4 burner stove; Majestic cook stove; 2 burner Pre-way camp stove; Quaker oil heater; 2 Space Coal Heaters; dining room chairs; buffet; old desk; davenport & chair; reproduction Colonial footstools; Philco table radio; Victrola; record cabinet; records; piano; clocks; double beds w/springs & mattresses; washstand; old bureaus; chest of drawers; chiffonier; wardrobe; wood chests; whitewash bowl & pitcher; ironstone soap dish; butter churn; Enterprise 32 meat grinder; sausage stuffer; lard press; butcher knives; elec. fry pan; elec. fryer-cooker; iron skillets; dishes; jars; crocks; jugs; and a lot of articles too numerous to mention.

Sale to commence at 11 a.m. when conditions will be made known by

EARL G. ESHLEMAN

Dupes & Gerberich, Auctioneers  
Kaylor & Young, Clerks

The Bachmansville Church of the Brethren.  
Refreshments to be served by Women of