

MARKET NEWS REPORT

At Lancaster Yards

Weekly Review

November 10, 1966

CATTLE 3500 — Slaughter steers steady to 25c Lower, after being 25-50c Lower on Monday Cows 50-75c Higher than last week's close Bulls steady to 50c Higher, with advance mainly on Utility and Commercial Feeder steers over 800 lbs. steady to 50c Lower, with weights under 800 lbs. Mostly steady. Supply included an estimated 30 percent Slaughter steers, 15 percent Cows and Bulls with the balance mainly Feeder steers

SLAUGHTER STEERS — Choice 950-1200 lbs 25.25-26.25, Load Mixed Choice and Prime 1085 lbs \$26.00, on Monday-Choice 1200-1300 lbs \$25.00-25.85, Load Mostly Choice 1350 lbs \$24.50 on Monday, High Good to Low Choice 950-1350 lbs 24.25-25.60, Good 23.50-25.25, Standard to Low Good 22.50-24.00

SLAUGHTER HEIFERS — Choice 850-950 lbs \$23.00-25.00 Good \$22.00-23.25, Standard 20.25-21.75

COWS — Utility and High Yielding Cutter Closed at \$17.50-19.00 few 19-20-35, Cutter 16.25-18.25, Canner and Low Cutter 15.00-16.75

BULLS — Choice 24.50-25.50, (Continued on Page 3)

Auction Only

November 9, 1966

CATTLE 521 — Slaughter steers steady to 50c Higher with mostly early sales Good and Choice 950-1200 lbs. 25-50c Higher. Cows 50-75c Higher. Bulls steady to 50c Higher, advances on Utility and Commercial.

SLAUGHTER STEERS — Choice 950-1200 lbs. 25.50-26.25, 1200-1300 lbs. 25.25-25.85, High Good to Low-Choice 950-1200 lbs 24.75-25.60, 1200-1350 lbs. 24.25-25.00, Good 950-1175 lbs. 24.00-25.25, 1200-1450 lbs. \$23.00-24.50, Standard to Low-Good 22.50-24.00

SLAUGHTER HEIFERS — Choice 850-950 lbs 23.00-25.00, Good 22.00-23.25, Standard 20.25-21.75

COWS — Utility and High Yielding Cutter 17.50-19.00 few 19-20-35, Cutter 16.25-18.25, Canner and Low Cutter 15.00-16.75

BULLS — Good 23.60-24.00, Utility and Commercial 22.50-24.85, Cutter 19.35-21.60

CALVES 202 — Good and Choice Vealers weak to fully \$1.00 Lower, other grades steady to weak

VEALERS — Choice 39.00-41.50, few 42.00-42.50, Good 37.50-40.00, Standard 34.00-37.50, Utility 29.00-34.00, Cull 22.50-26.50

HOGS 121 — Barrows and gilts steady to weak Sows mostly steady (Continued on Page 3)

Vintage Auction

November 8, 1966

CATTLE 445 — Slaughter steers uneven, mostly steady to strong, some sales on weights over 1200 lbs. and early sales Good steady to 25c Lower. Cows 50-75c Higher, Some Sales Canner only steady Bulls fully steady.

SLAUGHTER STEERS — High Choice and Prime 1000-1250 lbs. 25.60-26.85, Choice 1000-1250 lbs 25.10-26.35, Several 26.35-27, Good and Choice 1250-1425 lbs. 24-26, High Good to Low Choice 950-1250 lbs 24.50-25.75, Good 950-1300 lbs 23.50-25, Standard to Low-Good 22.25-23.85, Utility 21.10-21.85

SLAUGHTER HEIFERS — Few Good and Choice 850-1000 lbs \$21.75-24.50

COWS — Utility and High Yielding Cutter 17.50-19.35, Couple 19.85-20.35, Cutter 16.25-18.00, Canner and Low Cutter 14.50-16.25

BULLS — Good and Choice 23.85-25.35, Utility and Commercial 21.85-24.35, Couple 25.10-25.75

CALVES 518 — Vealers mostly steady Choice 39-42, Good 37.50-40, Standard 34-37.50, Utility 28.50-34, Cull 26.50-30.50, 70-90 lbs 24.50-28

HOGS 135 — Barrows and gilts mostly \$1 Lower

BARROWS & GILTS — US 1-2 180-235 lbs 22.10-22.85, Three head \$23-24.50, US 1-3 180-235 lbs 21.50-22, US 2-3 (Continued on Page 3)

New Holland Auction

November 10, 1966

CATTLE 908 — Slaughter steers uneven mostly steady after some early strength on 1000-1200 lb. High Good and Choice; Some weakness noted on Choice and Prime over 1200 lb. Cows 50-75 higher, bulls fully steady. Feeder steers mostly steady, Supply included 23 percent cows.

SLAUGHTER STEERS — Choice 950-1200 lb. \$25.50-26.50, few Choice and Prime \$26.27-10 Choice and Prime 1200-1480 lb. \$24-26.10 Mixed Good and Choice 1000-1175 lb \$25.25-25.85, Good 850-1325 lb. \$23.50-25.50, Standard to Low Good 900-1200 lb. \$22-24.60.

SLAUGHTER HEIFERS — Good and Choice 750-1000 lb \$22.50-24.35, Standard 650-800 lb. \$19.50-21.75

COWS — Utility and High yielding Cutter \$17.50-19.60, few \$19.85-20 Cutter \$16.50-18, Canner and Low Cutter \$15-16.75.

BULLS — Good \$22.85-24.85, couple Choice \$25.75-26.10

Utility and Commercial \$22.50-24.85, Cutter and Low Utility \$20-22.85.

FEEDER STEERS — Good and Choice 680-920 lb. \$24.10-25, Standard and Good 480-920 lb. \$22.75-24.

CALVES 355 — Vealers uneven, Good and Choice steady to \$1 lower, Utility and Standard (Continued on Page 6)

Chicago Cattle

Weekly Review

CATTLE — Local receipts 20,700 compared with 22,000 last week and 25,300 a year ago. Twelve market supply 166,900 compared with 177,000 last week and 201,000 same period a year ago. Slaughter steers sold strong to 25 higher. Heifers steady to 25 higher. Cows 50-75 higher. Bulls steady to 25 higher. In the carlot dressed beef trade at Chicago, steer beef Good and Choice steady to 50 higher with Standard (Continued on Page 3)

SALES EVERY TUESDAY



Staunton Livestock Market, Inc.
Staunton, Va.

For Nationally Known SIREs

Carnation Farms Breeding Service
Piper Division

An Outstanding Rag Apple Sire



052 DEE ANN
RAG APPLE MAPLE
121 A.I. daus. ave.
15,401M 3.7% 571F
Herdmates ave.
14,339M 522F

Pred. Diff. +1,021M +46F
He has 82 AI classified daughters which average 814 to 103.0% BAA

JOSEPH P. TRAINOR
Honey Brook, Pa.
Ph: Honey Brook 215-273-3847
215-273-3032
Intercourse 717-768-3431

Agway IS THE WAY!

COOPERATION — PROGRESS

Garden Spot Zone — 2nd Annual Meeting

TUESDAY, NOVEMBER 22 — 7:30 P.M.

Manheim Central High School, Manheim, Pa.

Agenda: Important Business, including election of Committeemen.

Guest Speaker: Nate White, Syracuse, N. Y.

Comments from County Agent, M. M. Smith
Bring Your Family — Refreshments

PUBLIC SALE

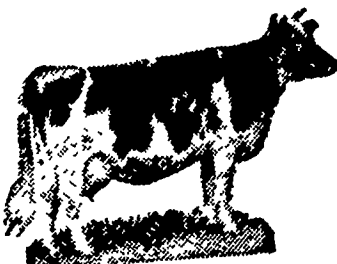
BLACK AND WHITE
HOLSTEIN FARM

DAIRY COW SALE PAVILION

along Rt. 230 Bypass directly across from the Comet Outdoor Theatre, just west of Lancaster.

FRIDAY, NOV. 18, 1966

7:30 P.M.



2 years credit terms. Credit can be arranged prior to sale.

40 Canadian Purebred Cows with official records

1 Citation "R" cow
10 hand picked grade cows

Fresh Day of Sale or right ready to fresh

CHARLES C. MYERS, Owner

New Holland Sales Stables, Inc.

Sale Schedule

Monday: Horse Sale .. 10:00 A.M.
Tack Sale to Follow Horse Sale
Monday: Hog Sale .. 11:30 A.M.
Monday: Beef Cattle .. 2:00 P.M.
Sale Order — Bulls, Steers, Cows, Calves
Wednesday: Sale of Dairy Cattle .. 12:30 P.M.
Thursday: Sale of Beef Cattle .. 12:30 P.M.
Sale Order — Bulls, Steers, Cows, Calves

JOHN H. GINGRICH, Mgr.

Ph. New Holland 354-2194

New Holland, Pa.

Vintage Sales Stables, Inc.

PARADISE, PENNA.

Bulls, steers, butcher cows, Hogs, lambs and veal calves
Sold on Commission

Sale every Tuesday 1:30 P.M.

Fat hogs and Feeder pigs sale
Every Saturday at 10 A.M.

For marketing information
Phone Area Code 717-442-4181

Box 100 Paradise, Pa.

10 mi. East of Lancaster on Rt. 30

Kenneth E. Hershey, Sales Manager

VINTAGE SALES STABLES, INC.

In the heart of Pa. Steer feeding country

Special Fall Feeder Sale

FRIDAY, NOVEMBER 18, 7:00 P.M.

Approximately 400 head each sale,
all weights and breeds.

VINTAGE SALES STABLES, INC.

Box 100, Paradise, Pa.

Phone (717) 442-4181

Kenneth E. Hershey, Manager