

Today's factory worker earns the cost of his monthly grocery basket in less than 37 hours, the smallest number of hours in history. Fifteen years ago, it took him 60 hours.

WOULD YOU BELIEVE...

THE NEW BRADY GRINDER-MIXER WILL EQUAL OR OUTPERFORM ANY OTHER MILL ON THE MARKET?

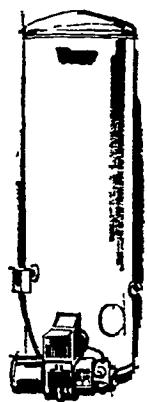
Big claim? You bet it is! And we're prepared to back it up with proof. Why not let us show you what makes the BRADY the finest in the field... at any price. Just ask us for a FREE demonstration on your farm. No obligation. It's all the proof you'll need!

BRADY FARM GRINDER-MIXER

Hay and ear corn are no problem for a BRADY! Grinds and mixes to your own feed specifications. Precision engineered and time-tested to blend concentrates, grains and roughage—use in filling silos. Will deliver high moisture ground ear corn and ground shelled corn into silos up to 50' high.

ALLEN H. MATZ
New Holland
Denver

Hot water... plenty of it!



With a Texaco Fuel Chief Water Heater!

These handsome, glass-lined heaters are fully automatic and occupy a minimum of floor space. They produce hot water faster than it is normally used for shaving, bathing, dishwashing, and laundering—and at a fraction of the cost of old-fashioned water heaters.

Come in and see them. We also carry the complete line of Texaco Fuel Chief furnaces, boilers, oil burners, and Texaco Fuel Chief Heating Oil—the best your money can buy.



We Give S & H Green Stamps

Garber Oil Co.

Texaco Fuel Chief Heating Oil
105 Fairview St.
MOUNT JOY, PA.
Ph. 653-2021

Vintage

(Continued from Page 2)
BARROWS AND GILTS —
US 1-2 190-215 lbs. 25.00-25.35,
US 1-3 175-240 lbs. 24.50-24.85,
1-2 90-170 lbs. 23.00-24.00, Few
2-3 200-240 lbs. 23.25-24.00.

SHEEP 42—Wooled Slaughter lambs \$1.00-2.00 Higher.

WOOLED LAMBS — Choice 60-90 lbs. 25.50-29.00, few 29.00-30.50, Good 22.50-25.00.

HOGS

October 1, 1966

Receipts totaling 266 head were sold. Lightweights, 22.35-22.85; 180-200 lbs., 23.60-25.50; 200-220 lbs., 24.25-25.75; 220-240 lbs., 24.10-25.25; 240 lbs. and up, 22.10-23.85. Sows, 20.60-21.50.

New Holland

(Continued from Page 2)

HOGS

October 3, 1966

Hogs averaged 50 cents lower as 723 head sold. Retail, 24-25.50; wholesale (U.S. 1-3),

23.50-24. heavyweights, 26-24. The 65 shoats offered ranged from \$15 to \$20 each.

CALVES

October 3, 1966

Calves sold steady with 127 head offered. Choice and Prime, 36-40; Good and Low Choice, 32-35.50; Standard, 30-31.50; Common, 22-29.50.

Lancaster Auction

(Continued from Page 2)

180-260 lbs. 24.25-24.75, US 1-2 155-175 lbs. 22.50-23.10.

SHEEP 37 — Few Sales wooded Slaughter Lambs strong to \$1 Higher.

WOOLED LAMBS — Choice 85-90 lbs. 25-27.

Chicago

(Continued from Page 2)

steady to 50 lower, while cow beef decline 50.

SLAUGHTER STEERS — Prime 1150-1450 lbs. 26.75-27.00, nine loads at the latter price, the lowest weekly top since mid July. High Choice and

Prime 1150-1425 lbs. 26.25-26.25.50; 75, Choice 900-1400 lbs. 25.25-

28.50, Mixed Good and Choice price and load mostly Prime 24.75-25.75, Good 23.75-25.25, 842 lbs. at 25.25, Choice 900-1050 lbs. 24.00-25.00; Choice 750-900 lbs. 23.25-24.25, Mixed Good and Choice 775-1000 lbs. 22.75-23.75, mostly 23.00-23.50, and Good 21.00-22.75.

SLAUGHTER HEIFERS

High Choice and Prime 900-1000 lbs. 24.75-25.50, three loads and a package at the latter

COBEY

ATTENTION FARMERS!

You can now buy direct from Cobey Warehouse

- Wagons
- Packers
- Disc Harrows, etc.
- Spreaders
- Mulchers

Also New Idea and Badger Equipment

HEISEY FARM SERVICE

Shirksville, Pa. Ph. 865-4526
Lebanon County just off Rt. 343

7TH ANNUAL

FALL FEEDER CATTLE SALE

SATURDAY, OCTOBER 22, 1966

1:00 P.M.

ABERDEEN SALES COMPANY,
LIVESTOCK AUCTION MARKET

P. O. Box 371
Aberdeen, Md. 21001

Located on Md. Rt. 22, 6 mi. east of Bel Air, Md., 6 mi. west of Aberdeen, Md., in Churchville, Harford County, Md.

500 — HEAD — 500

ALL STEER CALVES GRADING "FANCY" WILL BE SOLD INDIVIDUALLY.

CATTLE WILL BE SORTED, GRADED AND SOLD ON OUT WEIGHTS.

CONSIGNMENTS WILL BE ACCEPTED 24 HOURS PRIOR TO SALE TIME.

For further information and consignments, contact the following.

ABERDEEN SALES COMPANY

Phone: 734-6050 (Night) 734-7105

PUBLIC SALE

— of —

VALUABLE FERTILE
LIMESTONE SOIL FARM
Approx. 103 Acres
FRIDAY, OCTOBER 14, 1966

2:00 P.M.

Located in Warwick Twp., Lancaster Co., Pa., 2 miles east of Lititz Borough by way of East Main St., Lititz, Pa.

Farm consists of Approximately 103 Acres Fertile Limestone Soil. Erected thereon a Stone House with 8 rooms and tenant house attached with 5 rooms and Bath. Also extra storage areas. Large Barn with stanchions and feeding stables, large tobacco shed and other buildings.

Ground is suitable for commercial or building purposes with some railroad frontage, also approximately 2500 ft. road frontage, including East Main St. road and Newport Road.

Sale By Owners

CHRISTIAN W. GROFF and
ELLA J. GROFF

Elmer M. Murry - Auctioneer - 626-5244

Owen Hershey - Attorney

Auctioneers Note: You will want to see this farm. A farm of this size and quality are rarely offered for sale. Farm can be inspected any time. For information contact auctioneer or owner.

CUT FEED COSTS!

Plant Certified

Pennrad Barley Now

- High Yielding
- Beardless
- Stiff Medium Height Straw
- Much More Winter Hardy Than Wong
- Resisted to Powdery Mildew and Scald

In the past two years many farmers have reported yields from 80 to 100 and more bushels per acre.

Also available

- Redcoat Wheat
- Tetra Petkus Rye
- Balboa Rye
- Cert. Norline Winter Oats

We are now booking orders for DeKalb Corn

P. L. ROHRER & BRO., INC.

Smoketown, Pa.

Ph. 397-3539

Kent R. Ferrell, Jr. Auctioneers John H. O'Neill

Public Auction

REGISTERED AND GRADE
HOLSTEIN DAIRY CATTLE

70 - HEAD - 70

FRIDAY, OCTOBER 14, 1966

Night Sale 8:00 P.M.

CONSIGNMENTS:

James Cartor of Brampton, Ontario, Canada, will sell one load of fresh and close springing cows and heifers.

Mommouth Farm of Bel Air, Md., will sell 20 fresh and springing cows.

Leroy Crowl of Fawn Grove, Pa., will sell a load of fresh cows.

J. Deran Webb of Street, Md., will sell his complete herd in all stages of lactation.

Charles Dixon of Stewartstown, Pa., will sell several fresh cows.

Ralph Walker of Havre de Grace, Md., will sell one load of fresh cows.

There will be other consignments of good young cows and heifers.

All cattle are T.B. Accredited and Certified Bangs Free, Calhoun Vaccinated and tested within 30 days of sale for out of state shipment.

MANAGERS' NOTE: We are selling a top group of cattle at this sale. The consignments are from herds that are selling out. The owners will sell their cattle in our monthly sales as they freshen. All of these cattle are young and show good conformation and production. If you are looking for additional cattle or replacements, plan to attend this sale.

ABERDEEN SALES COMPANY

Sale Managers
Phone: 734-6050
Phone: 734-7105 (night)

Dairy sale held 2nd Friday each month.