

Tractor Pulling Power Increased By Weights

The pulling ability of a tractor partly depends on its weight. To increase that ability through improved traction and reduced tire slippage, weight is usually added to the wheels, says Ed Constien, extension agricultural engineer from Missouri University. In answer to the question about which is best, cast iron wheel weights, or weight inside the tire, the answer is that both are equally effective, according to Constien. However, there are some

differences between the two to be considered. Cast iron wheel weights are usually higher in cost than weight placed in the tires. From a practical standpoint there is a limit to the number of weights that can be added per wheel. Wheel weights can be taken off when not needed.

There are two kinds of weight which can be placed in tires. One is dry powder. The other is calcium chloride and water. The latter seems to be preferred, says Constien.

Calcium chloride and water, according to the agricultural engineer, is the least expensive

USDA To Terminate Cholera Agreement

The U. S. Department of Agriculture proposed to terminate on December 31, 1966, the marketing agreement and order regulating handling of anti-hog cholera serum and hog cholera virus.

The main purpose of the marketing agreement and order initiated in 1935, was to

provide a substantial reserve of serum to protect U. S. swine against serious outbreaks of hog cholera. Progress made in eradicating hog cholera has diminished the need for anti-hog cholera serum, and the required serum reserves, so that the marketing agreement and order are no longer necessary in the public interest, USDA said.

Hog cholera incidence has been drastically reduced by control measures used in the national eradication campaign, which was started in December 1962. During the fiscal year ending July 1, confirmed outbreaks of hog cholera throughout the U. S. numbered only 583, compared with 1,110 during fiscal 1965 and 1,118 in fiscal 1964. All states are now engaged in the eradication campaign, and the bulk of the nation's swine population—over 97 percent—are in states which have advanced to Phase II or

method of adding weight. Maximum amount that can be added is limited by tire size. The tire is normally filled only 75 to 90 percent full. The calcium chloride adds extra weight to the water and keeps it from freezing. Adding 100 pounds of weight to a tractor (50 pounds on each wheel) will increase its pulling ability 50 pounds on sandy loam, and 36 pounds on dry sand.

Tests show the average tractor can pull 937 pounds per rated plow bottom in its usual plowing gear. Adding 600 pounds to a three-plow tractor would increase its pulling ability about 10 percent if more traction is needed. In field operation, slippage should not exceed 16 percent. Exact slippage can be found by marking a spot on a rear tire and running the tractor without load a distance of 30 turns of the rear wheels. Then put the tractor under load and count the revolutions required to travel the same distance. The added number of turns times 100, divided by the total turns gives the slippage in percent.

If, for example, the wheel of a tractor under load made 34 revolutions, subtract 30 from 34. Multiply the difference, 4, by 100. Then divide by 34. The slippage is 11.8 percent.

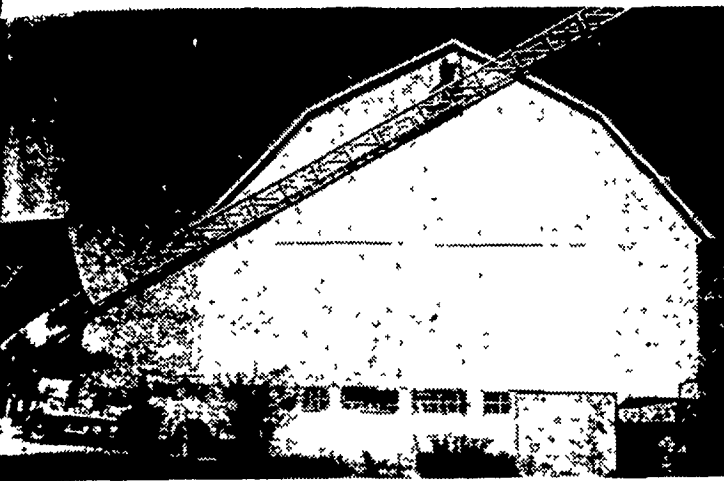
Manor FFA Member To National Dairy Meet

Richard Thomas, a member of the Manor Future Farmers of America Chapter, left Friday to take part in the National FFA Dairy Cattle Judging Contest at Waterloo, Iowa, on Monday.

Thomas will be accompanied by Garland E. Gingerich, Penn Manor vo-ag teacher and coach for the team. Other members of the State team are Roy Jacobs, Indiana R4, and Thomas McConn, West Alexander. Thomas placed first in FFA judging at Penn State in June.

The team will stop at farms in Ohio, Indiana and Illinois for practice judging en route to Waterloo. They will judge for type, production records, and pedigrees.

WE USE QUALITY PAINT AND IT DOES STAY ON!!!



Aerial Ladder Equipment Used To Paint Your Farm Buildings For Prices Contact

C. RALPH MILLER
Spray-on and Brush-in Painter

R. D. 4, Manheim, Pa. Ph. 665-3388

ATTENTION CATTLEMEN & DAIRYMEN of Lancaster & Chester Counties

PRO-LIX LIQUID CATTLE FEED

Now Available — Delivered To Your Farm

PRO-LIX is a unique blend of--

- Fish Solubles 30% Protein
- Distiller Solubles
- Urea
- Molasses 38% Sugars
- Brewers Yeast B Vitamins
- Vitamins 12500 A. U. S. P.
- Minerals Contains No Salt

A 4 - In - One Product

1. Proteins
2. Vitamins
3. Minerals
4. Molasses

The only Liquid Feed containing **VEGETABLE** and **ANIMAL PROTEINS**

PRO-LIX may be control fed or free-choice fed to cattle with no labor involved.

America's Only Fermented Supplement!

The most nearly perfect supplement yet developed for cattle, containing 98% digestible proteins.

A PRODUCT WITH UNEQUALED SALES GROWTH

LAN-CHESCO COMPANY

1016 Grand View Blvd., Lancaster, Pa. — 17601 PH. 717-394-0645

...pick with a **FORD MOUNTED CORN PICKER!**

They're loaded with features for getting more of the ears, cleaner husking and less shelling.

1-ROW

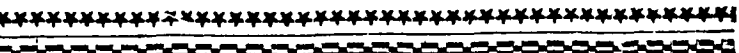
Only a few minutes are required to mount this picker on Ford Tricycle or 4-Wheel Tractors.



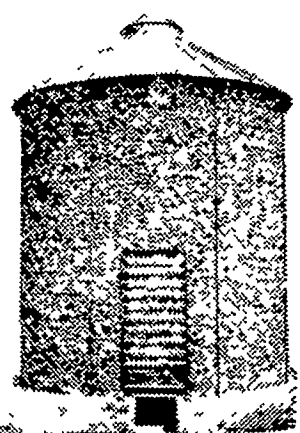
Come in and see how Ford's exclusive "Corn Saver" design can help you profit more!



Allen H. Matz
505 E. Main St.
New Holland Denver



Still your best crib buy
LOW PRICE
Over 1200 bu capacity—means 1st year storage at less than 25¢ per bu.



EXCLUSIVE SPEEDY ROOF RAFTERS MAKE SPEEDY CORN CRIBS

Twice as Fast Twice as easy to erect

Speedy roof rafters guarantee easy, proper placement of roof panels the first time. Rafters add great strength to the roof. Panels need only to be bolted together in three places. It's another big time-saving feature you get only in Speedy Bar-Lok corn cribs.

Stands up best—lasts longer
Wire mesh panels are 5-gauge wire—thick as a 1/4" bolt! No

bulge or sag. Sturdy 26-gauge galvanized roof is securely anchored to 9 steel roof rafters and side panels. Can't blow off!

Come in today and see the Speedy Bar-Lok corn crib. Let us prove to you that Speedy is twice as fast—twice as easy to erect. Let us show you all the other features that make Speedy Bar-Lok your best corn crib buy.

LANDIS BROTHERS, INC.

1305 Manheim Pike, Lancaster, Pa. Phone 393-3906