

District Hay Show Winners Announced

Several farmers from Lancaster County were among the winners at the eleventh annual district hay show Sept. 12 at Harrisburg, according to associate county agent Arnold G. Lueck.

The show was in two sections, one of field cured hay and the other of hay that had been partially field cured and finished with heat. A grand

champion and reserve champion were named.

The grand championship was won by Russell F. Heilman and son of Lebanon county. He showed heat-cured, late-cutting alfalfa. Reserve champion honors were taken by M. Dice Statler of Franklin county with a sample of field-cured late-cutting alfalfa. Heilman will receive special recognition at the annual Grassland Conference to be held at Penn State University on November 21-22.

George Berggren, extension agronomist, at Penn State was judge. The show, one of a

series of five, was conducted by the University's Extension Service with the cooperation of the Pennsylvania Grassland Council. Dr. John E. Baylor, extension agronomist, was director of the show.

All first, second, and third place winners will be entitled to a free chemical feed analysis of the hay exhibited. The analyses are made at Penn State.

The first three places in each class will compete at the 1967 Pennsylvania Farm Show next January at Harrisburg with similar samples from the other district shows. All awards at the state-wide show will be

made on the basis of both visual and chemical evaluations.

Local winners included:
 Section 1, Field Cured
 Class 2 (Alfalfa—later cuttings) 2 — Richard Harnish, Pequea R1; 5 — Queameade Farms, Narvon R2.
 Class 4 (Alfalfa Grass Mixed—later cuttings) 5 — Richard Thomas, Millersville R1.
 Class 5 (Clover) 4 — Dave Hoover, Millersville R1; 5 — Gary Tomlinson, Pequea R1.
 Class 12 (Mixed Hay—over half grass) 1 — Queameade Farms; 2—Donald Nissley, Holtwood R1; 5 — Paul Nissley, Holtwood R1.

Class 13 (Annual Grasses) 1—Galen Crouse, Stevens R1.
 Class 22 (Alfalfa—late cuttings) 2—Crouse.
 Class 30 (Grass—second cuttings) 1—Crouse.
 Class 31 (Mixed Hay—over half legume) 1—Crouse.
 Class 33 (Annual Grasses) 1—Crouse.

**Some Gave Up and Cried,
 Others Tried A
 Classified
 In Lancaster Farming**

Need . . .

HAY — STRAW — EAR CORN

Buy Now and Save!

More and more farmers are buying from us for better value and all around satisfaction.

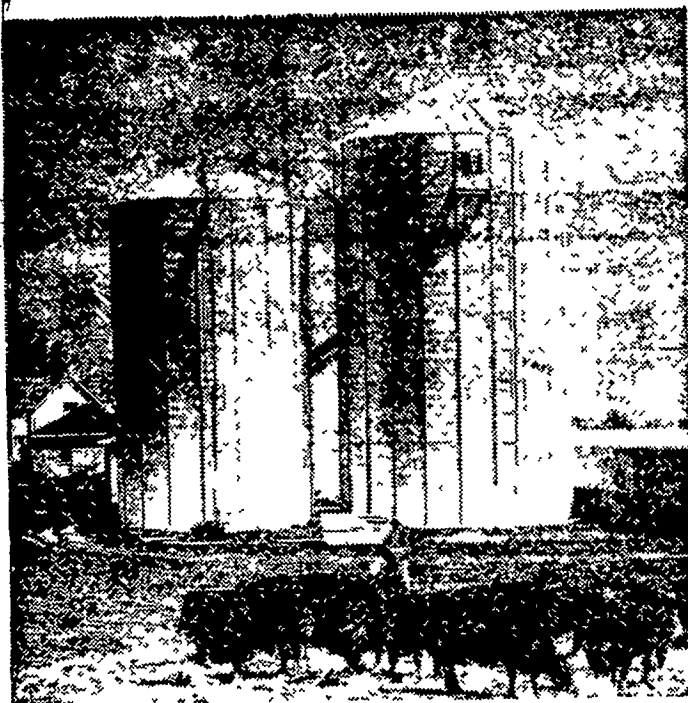
Delivered — any quantity

Phone Area Code 717 687-7631

Esbenshade Turkey Farm

Since 1890
 PARADISE, PA.

Reduce Crop Losses!



Feeders, Dairymen! Sealed Storage Can Help You Do It!

Don't let hot, dry weather cut you completely out of your corn crop profits! An investment in Butler sealed storage can save the day!

If you normally expect a yield of 100 bushels per acre—and dry weather cuts this yield in half—your 50-bushel crop, cut as silage and stored in a Butler Stor-N-Feed unit, will produce as many pounds of beef or pounds of milk as your 100-bushel yield, when harvested as grain. It also will pay you to investigate late forage crops such as sudan hybrids. Put up as low moisture silage, the nutrient yield per acre is very attractive.

See us today for details on a proven Butler Stor-N-Feed system . . . big capacities, fast discharge rate, mechanically reliable—and priced thousands of dollars less than some systems. Low-cost "Pay-As-You-Grow" financing readily available!



ADDISON H. MARTIN, INC.

Builders of Farm Systems

R. D. 2, Ephrata

717-354-5374

What's New in Feeding Cattle?

Ful-O-Pep Cattle-izer Beef Supplement

An entirely new concept in cattle nutrition opens up new profit possibilities for cattlemen everywhere. Based on a whole new principle in feeding, Ful-O-Pep Cattle-izer Beef Supplement changes the proportions of organic acids produced in the rumen. As a result, up to 20% more energy is available to the animal, as compared to the same amount of regular feed without the new concept.

This extra energy means faster gains, less feeding time to market, and considerable lower feeding costs. For thousands of cattlemen, it means extra profits.

Try the new concept soon.

Ful-O-Pep **Cattle-izer** Beef Supplement

Harold H. Good
 Terre Hill

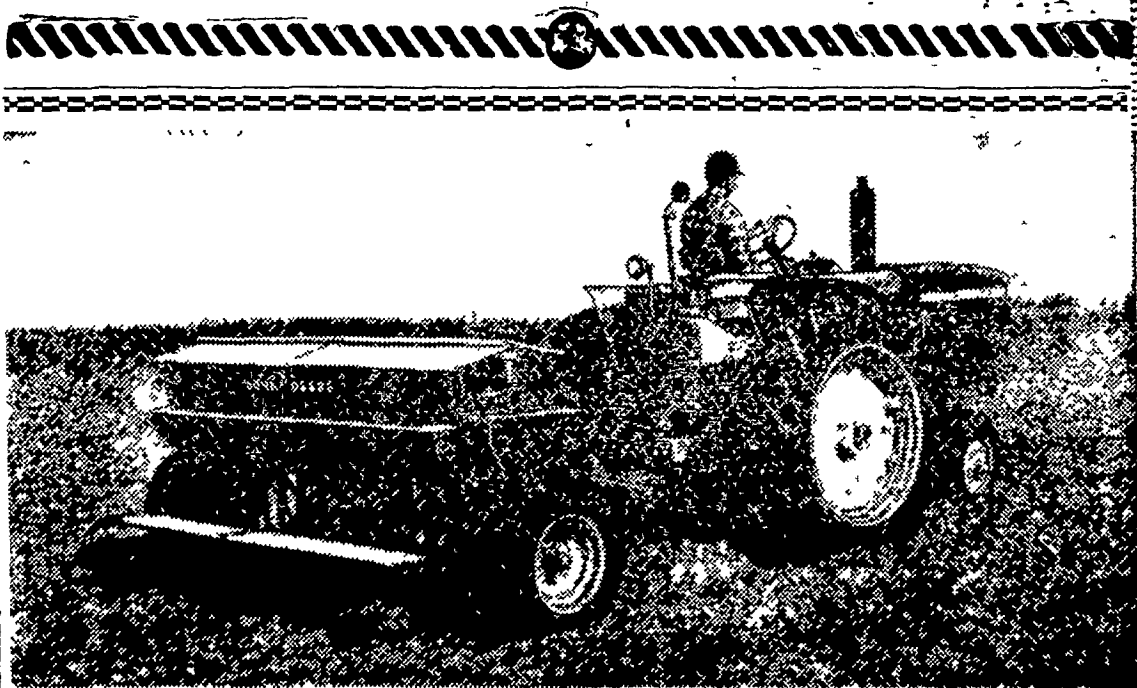
S. H. Hiestand & Co., Inc.
 Salunga

H. M. Stauffer & Sons, Inc.
 Witmer

Grubb Supply Co.

Stevens Feed Mill, Inc.
 Stevens, Penna.

Elizabethtown



Big capacity with accuracy

John Deere

FB-B. Grain Drill

Each line, each curve, each dimension of a John Deere FB-B Drill means higher yields, faster planting, and lower costs to you.

Grain and fertilizer boxes are contoured to assure a steady, even flow of materials to the feeds. Every inch of space is "planting" capacity . . . no false bottoms or sides.

See the FB-B—the drill you should own. Stop in soon for complete information.

Landis Bros. Inc.
 Lancaster 393-3906

A. B. C. Groff, Inc.
 New Holland 354-8001

Wenger Implement Co.
 Buck BU 4-4467

M. S. Yearsley & Sons
 West Chester 696-2990

Alan Beyer
 Christiana LY 3-5687

Shotzberger's
 Elm 665-2141

