

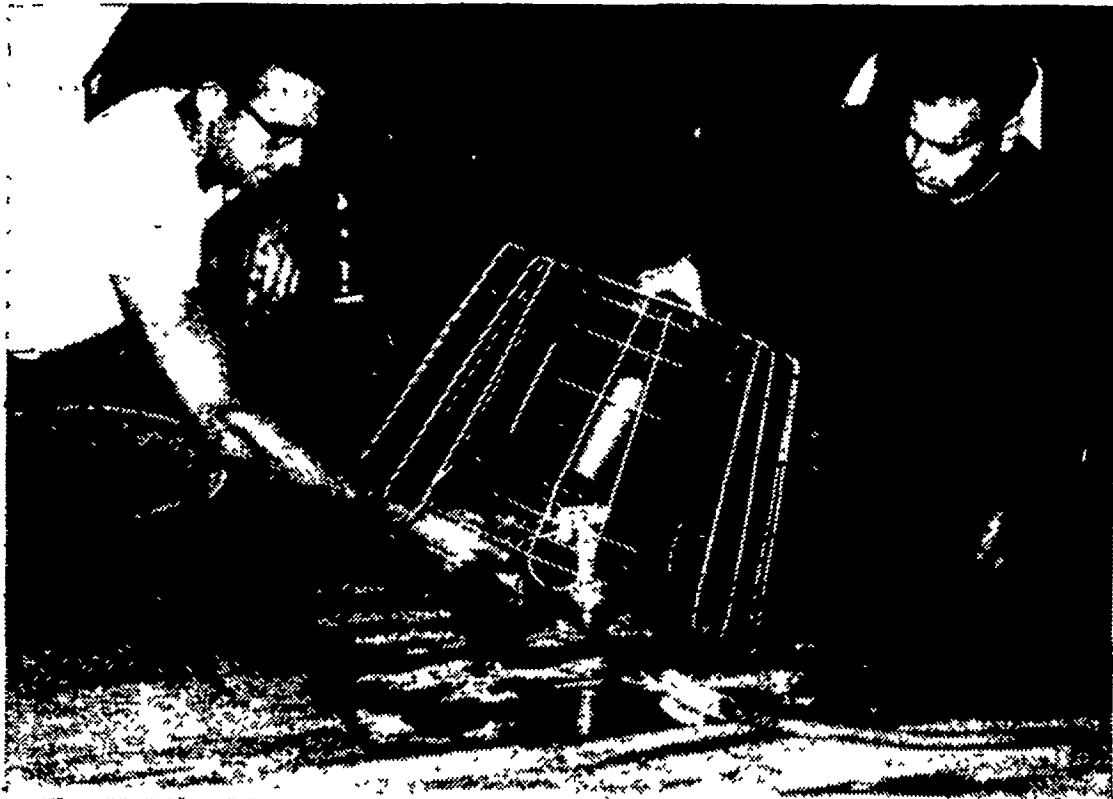
SEP 15 1966

Lancaster Farming

VOL. 11 NO. 41

Lancaster Farming, Saturday, September 10, 1966

\$2 Per Year



LET'S GET A LITTLE HEAT IN HERE — Jay Rohrer, left, and John Yocum demonstrate the use of the Gastobac Co. equipment set up on the floor of Rohrer's tobacco shed. The experiment being carried out by PSU Field Research Laboratory is designed to eliminate, or reduce, shed burn of tobacco by adding heat during the curing stage.
L. F. Photo

Project Tests Effects Of Heat On Tobacco Curing

by Don Timmons
Lancaster County tobacco farmers, recalling last year's poor shed curing conditions, may be wondering what, if anything, can be done to avoid such a blow to the quality of their product in the future. At the Penn State University Southeastern Field Research Laboratory they think supplemental heat in the sheds may be the answer, and the staff is gathering data on the subject right now.

However, based on the data available from that limited experiment, Henry B. Engle, research agronomist, was able to estimate that for every dollar the project spent on heating the tobacco shed, a three-dollar return was realized. He figured a depreciation schedule of ten years on the equipment, and a total investment of \$270 for the two and one-half acres of tobacco treated.

(Continued on Page 6)

According to John Yocum, superintendent of the research station, practically no year is completely free of shed burn or rotting. "Sometimes you can't even see the damage, but micro-organisms working on the leaf will, at the very least, cause weight loss," Yocum explained.

Frey & Greiner Pace July DHIA

A registered Holstein cow owned by J. Mowery Frey Jr., 401 Beaver Valley Pike, Lancaster, completed the highest lactation Hertz produced 20,061 lbs. of milk, 860 lbs. of butterfat with a 4.3% test in 287 days. Second high lactation was completed by a registered Holstein cow owned by Charles Tindall, Peach Bottom R1. Lady produced 19,461 lbs. of milk, 857 lbs. of butterfat with a 4.4% test in 305 days.

The herd of Stanley G. Greiner, Manheim R4, had the highest monthly butterfat average. This herd of 188 registered.

(Continued on Page 7)

Eight Lancaster County Townships Apply For Drought Emergency Aid

Names of eight northern Lancaster County townships were submitted this week to the State Disaster Committee with the request that they receive assistance under the federal emergency livestock feed program, according to Miss Dorothy Neel, manager of the county Agricultural Stabilization & Conservation office.

Aid to individual townships has never been granted in the state, although Miss Neel said there is apparently nothing in the regulations to make such a request prohibitive. The last time ASCS requested drought emergency aid for less than

the entire county was in 1963. Although that request was denied at the state level, the county was later approved for aid.

The local committee determining the townships' need for assistance was composed of Fred Seldomridge, ASCS, chairman, M. M. Smith, county agent, extension service, and Frank Ackerman, Farmers Home Administration.

Townships requesting assistance were Penn, Conoy, Mount Joy, West Donegal, East Donegal, Rapho, Warwick, and Elizabeth.

Under the livestock emergency feed plan, Miss Neel said, farmers in those townships who could prove they have suffered financial loss because of drought, and need

(Continued on Page 10)

Soil Testing Reports To Be Streamlined, Vo-Ag Teachers Told

Soil test reports will be coming back to farmers with a brand new look one of these days, a vocational agriculture teacher told his fellow county association members Wednesday.

Lancaster County agriculture teachers heard Richard Hackenberger of Penn Manor High School agriculture department report on a Soils Workshop he attended this summer at Penn State University.

According to Hackenberger, fertilizer recommendations by Penn State's soil testing service will be specific for each of five soil types in Pennsylvania. The best soils will be grouped as Group I, and all others will be graded in groups II through V, depending upon their natural ability to grow

(Continued on Page 7)

Farm Calendar

September 12 — 12th - 16th, All-American Dairy Show, Farm Show Bldg., Harrisburg — 8 a.m., State Junior Dairy Show, Harrisburg — 6 p.m., State Black & White Sale, Harrisburg.

— 7 p.m., 4-H Photography Club meets at home of Dale Shenk, Litz R3; will visit Grant Heilman studio.

September 13 — 13th - 17th, York Interstate Fair, York Fairgrounds

— 8 a.m., State Black & White Show, Harrisburg.

— 8 a.m., Brown Swiss breed show, Harrisburg.

— 7:30 p.m., Lancaster Land Owners Assn., at American Legion Hall, Honey Brook

— 7:30 p.m., Manor Young

All-American Dairy Show To Host Nation's Most Outstanding Cattle

The Farm Show Building in Harrisburg next week will be All American and All Dairy.

The third Pennsylvania All-American Dairy Show promises to be the biggest yet, with entries totaling 2358 head. Some of the top cattle which will compete are fresh from wins at the New York State Exposition at Syracuse, and the Maryland State Fair at Timonium. There will also be champions from other state fairs and from the first two All-American shows.

The six principal breeds to be represented in this year's show are: Ayrshire, Brown

Swiss, Guernsey, Holstein, Jersey, and Milking Shorthorn. They will come from fifteen states and Canada.

The week's events will open Monday with a junior dairy show for Pennsylvania 4-H and FFA youths. Entries will consist of 500 "blue ribbon" calves, heifers, and cows which earned their right to compete by being top animals selected at preliminary district shows. Many youngsters will also be competing in the open classes of the various breed shows.

Monday night, at 6 o'clock, 45 females and three bulls will be offered in the annual

(Continued on Page 5)



HUMIDITY RISING? — Jay Rohrer checks relative humidity gauge in his tobacco shed. The device is rigged on a rope and pulley so it may be pulled down from near the top of the shed for a reading, and then hoisted up again. When the humidity reading gets above 70 percent, the gas burners are turned on.

L. F. Photo