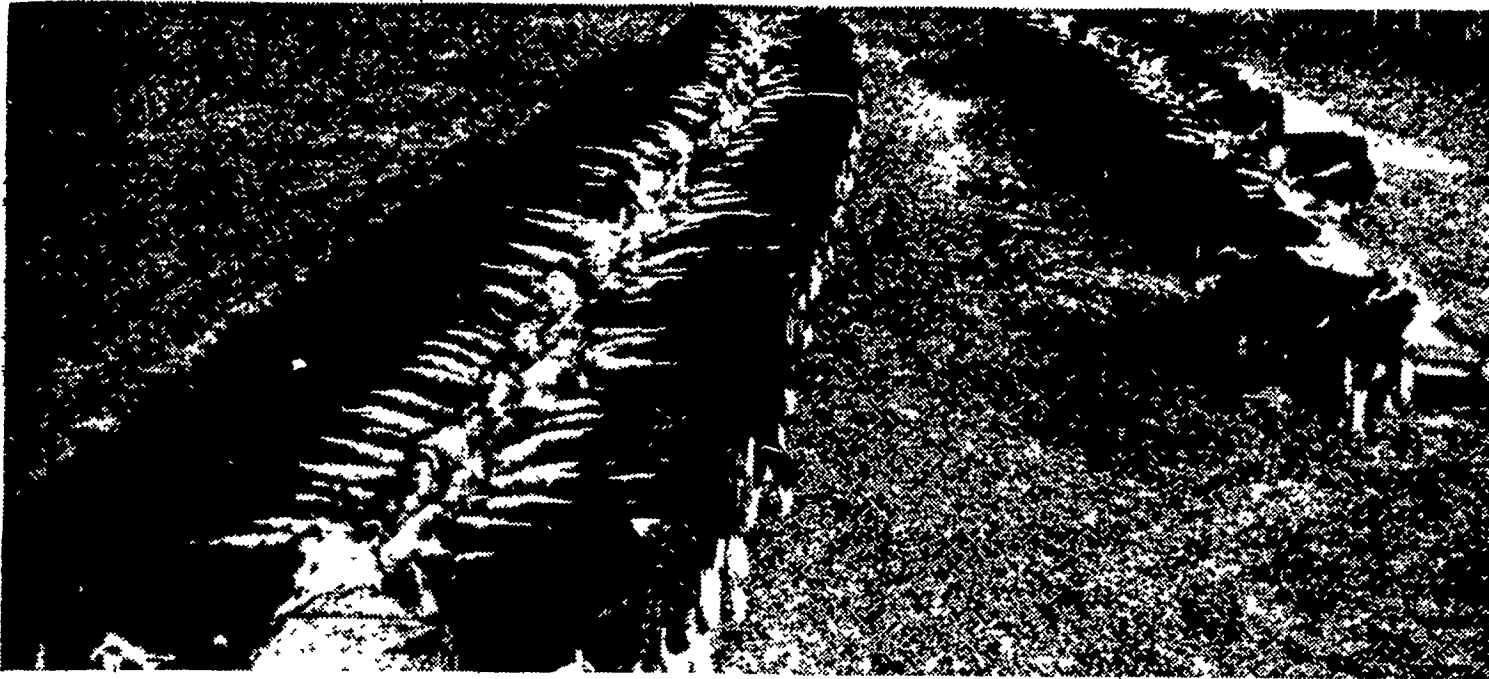


Are you ready to contract your cattle feeds?



✓ **CHECK** *these feeds before you buy!*

The secret of cattle raising is in your feed lot. That's where you will make your profit! Naturally, you'll need a large amount of feed for your steers—and that's why you want to be sure you have an economical and complete supplement to mix with your home grains. Here's where Red Rose Cattle Supplements can help you.

Red Rose

32 BEEF CATTLE SUPPLEMENT

This is the supplement you will want to use as a mixing ration for your home-grown grains, or you can use it as a protein supplement to balance the feeding of low protein roughages.

Red Rose

50 BEEF CATTLE SUPPLEMENT

This supplement is in mash form. Feed 50 Beef Cattle Supplement (the nutrient fortifications are double the levels of 32 Beef Cattle Supplement) at the rate of one pound per head per day.

Available with or without Diethylstilbestrol - or Antibiotics

BALANCED, HIGH PRODUCTION RATIONS will be yours when you use Red Rose Beef Cattle Supplements—and you'll get your beef animals to reach market weights faster. So, plan to stop at your Red Rose dealer soon and place your orders.

Stop Losing Cattle Profits to Internal Parasites

Red Rose CATTLE WORMER
with THIBENZOLE

AN EFFECTIVE, SAFE AND CONVENIENT
WAY TO KILL WORMS IN CATTLE

THESE RED ROSE DEALERS ARE READY TO SERVE YOU

Walter Binkley & Son
Lititz

Brown & Rea
Atglen

Elverson Supply Co.
Elverson

L. T. Geib Estate
Manheim

I. B. Graybill & Son
Refton Strasburg

E. M. Heisey
Mt. Joy

Heistand Bros.
Elizabethtown

A. L. Herr & Bro.
Quarryville

David B. Hurst
Bowmansville

Mountville Feed Service
Mountville

Musser Farms, Inc.
Columbia

Musser's Mill
The Buck

Chas. E. Sauder & Sons
Terre Hill

Ammon E. Shelly
Lititz

L. M. Snavely
Lititz

E. P. Spotts, Inc.
Honey Brook

H. M. Stauffer & Sons, Inc.
Witmer

Crop Roundup

FALL PLOWING IS MAJOR FARM ACTIVITY

Scattered showers in many sections of the State in the past week improved conditions for fall plowing, according to the Pennsylvania Crop Reporting Service. Although soil moisture is still very short throughout the State, plowing is now possible in most areas. The effects of earlier showers are becoming more noticeable in pastures and hay fields, which have made considerable growth during the last couple weeks. Besides plowing, the principle farm activities during the week consisted of filling silos, picking tomatoes, digging potatoes, picking fruit, hay making and topping and cutting tobacco.

GRAINS

Plowing and fitting of seed beds for fall grains is progressing rapidly in the south, and is making some progress in northern counties. Oat harvest still continues in a few localized northern areas, but is practically completed State-wide. Buckwheat: The limited acreage in buckwheat is making good growth.

CORN

Although the corn picture is somewhat improved, much of the State's crop normally harvested for grain will be put in silos. Ear development has been better since recent rains, but the ears will be short and yields low. Corn is just reaching the dent stage in the south and the dough stage in the north.

HAY AND PASTURE

Although the amount of feed being obtained from pasture is still below normal throughout the State, pastures are now providing some feed. Recent rains improved prospects for a late cutting of hay, but stands are still quite short in most areas.

FRUIT

Recent rains helped fruit prospects, primarily in areas where irrigation had kept the crop growing. Reports from fruit areas indicate that some trees on poor soils have died as a result of the hot dry weather. Peach harvest continues with small size, but excellent quality. Picking of Sun Highs and Hale Havens is nearly completed in the Adams-Franklin-York area where picking of Elbertas is just getting started. Although some apples are being picked, harvest is being delayed as long as possible to get further sizing of the fruit. Some picking of Rambos continues. Harvest of Yellow Transparents is over in most sections. Irrigation continues where facilities are available. Picking of Bartlett pears is just beginning in the southern area.

TOBACCO

Topping of tobacco continues in the Lancaster County area, with cutting just getting started. Quality has improved recently, but growth has been very irregular. Digging of Cobbler potatoes is nearly completed. The tubers were small and yields light. The fall crop in the north looks good to excellent, with prospects improving daily. Tomato harvest continues with later pickings producing larger fruit.

Our advertisers will be glad to have you mention Lancaster Farming when answering their advertisements.