

**Egg Ranch**

(Continued from Page 9)  
 "Eggs will be under refrigeration from collection to delivery," said Paul Hess. Shipping will be done largely in the company's own refrigerat-

ed truck. Some eggs may also be picked up by buyers at the farm.

**OWN AIRFIELD**

The firm has plans to construct its own airplane land-

ing strip right on the farm. The future field is now being used for tobacco, but will be readied once that crop has been harvested. Claude Hess is a licensed commercial pilot, and will use his private plane in the administration and promotion of the Plain & Fancy Egg Ranch Inc.

A solid fence offers wind shelter for a distance only equal to its height.

**2-County Land Owners Assn. To Fight Pipeline**

Some fifty persons, one-third of whom were reportedly from Lancaster County, turned out for a meeting of the Lancaster Land Owners Association

Wednesday night at Honey Brook, Chester County.

The group assembled to register a protest against the proposed natural gas pipeline to be constructed between Marietta and Eagle in the two-county area. Objections to the taking of land for this purpose by the Manufacturers Light and Heat Co. of Pittsburgh are now being organized by the land owners association. Reportedly, the group is represented by counsel and plans to make a test case of pipeline trespassing.

A second meeting has been set for Tuesday, September 6, at 7:30 p.m., at Paul Z Martin Sales Stables on Route 23 between New Holland and Blue Ball. The association spokesman said all concerned farmers and land owners are invited to attend this meeting protesting acquisition of their land for pipeline use.

**Plowing Contest**

(Continued from Page 1)  
 held at the John Rodgers farm, Mifflin County.

Donald B Peterson, Honey Grove R1, Juniata County, was named state champion plowman for 1966.

Zimmerman, shown here following his winning permanent possession of the County Plowing Contest trophy in July, won the county title in 1965 and 1966 and finished fifth in last year's state contest.

Milk and other dairy products are established favorite foods in America. This national preference for milk has helped to stabilize the dairy industry's per capita product sales and consumption.

**STOP SUCKERS COLD WITH MH-30<sup>R</sup>**



R - MH30 is the U.S. Rubber reg trademark for its growth regulant. U.S. Rubber Co., Chemical Division, Naugatuck, Conn 06771

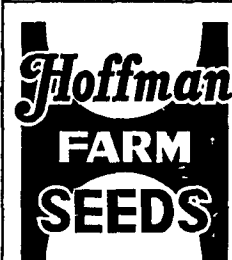
— DISTRIBUTED BY —

**P. L. ROHRER & BRO., INC.**

SMOKETOWN, PA.

Phone 397-3539

For The Man Who Wants **BIGGER YIELDS**



Settling for average grain yields is like putting an automatic half-hitch on crop profits. Look at Pennsylvania's record for 1965. The average wheat yield was a record 34 bu. per acre, but good management and today's good varieties can produce 45 to 50 bu. Barley averaged 48 bu. per acre (also a record high) but some farmers are now growing 75 to 80 bu. on good soils. Oats averaged 46 bu. Good growers are harvesting 70 to 75 bu. Ohio studies show that when wheat yields rise from 30 to 45 bu. per acre, cost per bushel drops about 24 cents simply because total crop expenses do not increase in the same proportion as yields. Yes, there's plenty of room for yield improvement that can come from Hoffman proven varieties. Hoffman quality seed . . . plus good farm practices. Set your sights on grain yields that are considerably above average!

A. H. HOFFMAN SEEDS, INC. • Landisville (Lancaster County), Pa.



**Another First From Frey Bros.**



**"LIFETIME STALL"**

The sturdiest, most economical free stall on the market.

Made of extra strong 10 ga. 2 1/2" O.D. tubing.

A new design or placement of the resting bar for greater cow comfort, plus elimination of the so-called bedding board.

Painted both inside and out.

One piece construction — No sharp edges.

— Compare our prices —

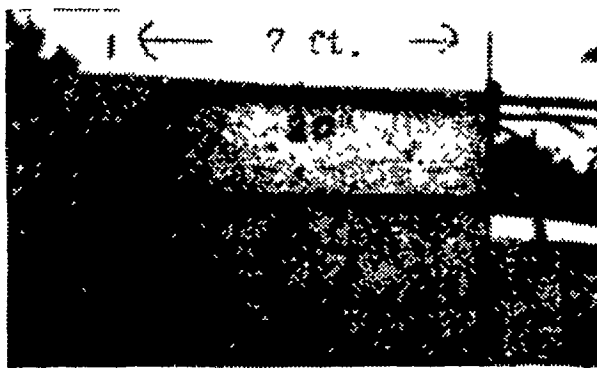
\$14.50 each, \$13.75 each in lots of 50

\$13.25 each in lots of 100 or more.

**THE FREE STALL**

Free stall housing offers a combination of both loose housing and the stanchion barn, but eliminates the disadvantages of both. The stalls placed on 4' centers keep the cows separated, thus minimizing teat injury. There are smaller bedding requirements and bedding is changed less often.

Users report cows are more content, produce more, and easier to care for, and require less hand labor and above all, are cleaner than the same cows in stanchion barns.



— We Also Manufacture —

FREY ECONOMY GATES

HEAD GATES ( 2 models)

ALL WEATHER SALT AND MINERAL FEEDERS

ALL METAL FEED TROUGH AND HAY BUNKS

A PATENTED FREY-O-MATIC LATCH

ALL METAL STOCK RACK

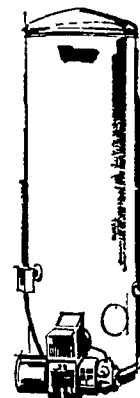
R. D. 2

QUARRYVILLE, PENNSYLVANIA

Phone: (717) 786-2235

**Frey Bros.**

**Hot water... plenty of it!**



With a Texaco Fuel Chief Water Heater!

These handsome, glass-lined heaters are fully automatic and occupy a minimum of floor space. They produce hot water faster than it is normally used for shaving, bathing, dish washing, and laundering—and at a fraction of the cost of old-fashioned water heaters.

Come in and see them! We also carry the complete line of Texaco Fuel Chief furnaces, boilers, oil burners, and Texaco Fuel Chief Heating Oil—the best your money can buy.



We Give S & H Green Stamps

**Garber Oil Co.**

Texaco Fuel Chief Heating Oil

105 Fairview St.

MOUNT JOY, PA.

Ph. 653-2021