

P. Thomas Top Scorer In State Yorkshire Show

Park Thomas, Park Farm, Beavertown, topped a field of 47 contestants in the live evaluation contest at the two-day state Yorkshire Show and Sale here last Thursday and Friday, according to tabulations announced Wednesday by John Henkel, vice president of the state association. Junior winner was Jeff Paine, Lebanon R4.

After being evaluated on the hoof, the eight pairs of littermates were cut out and their meat characteristics determined by actual measurement. The top pair was entered by Reno Thomas, Brooks End Farm, Beavertown. Second place went to Curtis Roth, Kempton, and third place to Phyllis Paine, Lebanon R4. Carcass evaluation was judged by Dwight Younkin and Lester Burdette, Penn State livestock extension specialists.

In the Bred Gilt judging competition Reno Thomas had the champion which later sold for \$215 to Steven Martin, Maryland Reserve honors went to Carl Harrison, Bedford, and his Yorkshire gilt was bought by Congdon Bros. of Gorton, N.Y. for \$185.

The 45 bred gilts sold for an average of \$154 at Friday's Yorkshire Sale at the Guernsey Sales Pavilion.

In the Open Gilt class, 12 littermate pairs were shown. The champion pair was entered by Leon Arnold, Lebanon; they were later purchased by Omar Beam, Elverson, for \$200. Beam also bought the reserve pair of open gilts shown by Donald Aunand, Lewistown. These brought \$190.

The average sale price for the 12 pairs was \$158.40, Henkel said.

Twelve boars competed in the show with the championship going to an animal shown by Curtis Roth, Kempton. The champ was bought by William Seaman of Pavilion, N.Y. for \$190.

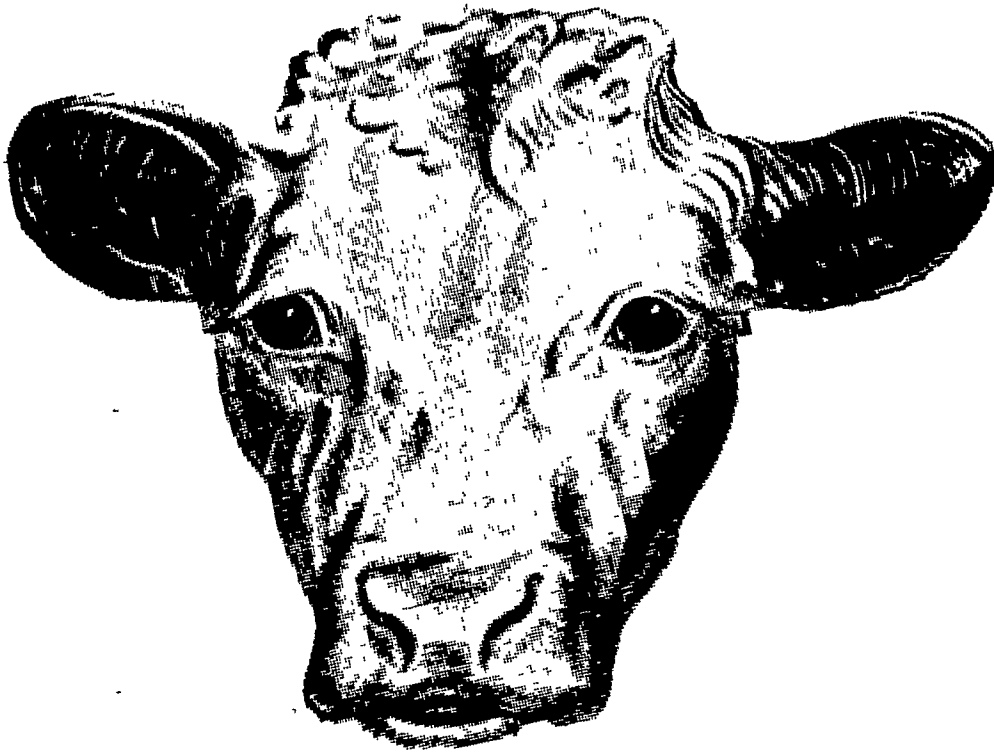
Reserve champion boar shown by Phyllis Paine, was sold to Shisler Farms, Sewell, N.J. for \$145.

Henkel, who is also president of the county swine association, said that approximately 250 people had been served at the barbecue put on by the Lancaster swinemens. Henkel reminded anyone interested in entering the county swine carcass show, to be held in conjunction with the Lampeter Fair on September 29, to contact association secretary James Z. Martin, Christiansburg R1 in advance of that date.

Evaluation Contest Results—
Seniors 1, Park Thomas 2, John Henkel, Willow Glen Farm, Strasburg R1. 3, George E. Cogley, Ronks R1. 4, John H. Burkholder, Ephrata R3; 5, Carol Henkel, Willow Glen Farm, Strasburg R1. 6, Melvin Huber, Lititz R1. 7, Robert W. Paine, Lebanon R4. 8, Wellington A. Hiester, Fleetwood R3. 9, Joe Little, Willow Glen Farm, Strasburg R1; and 10, Leon Arnold, Lebanon.
Junior Division 1, Jeff Paine; 2, Francis S. Arnold, Lebanon R1; 3, Terry Haitman, Kutztown R2. 4, Jeffrey Flinchbaugh, Felton R1; 5, Joel Arnold, Lebanon R1; 6, Edwin G. Wessner, Kutztown R2; and 7, Larry Arnold, Lebanon R1.

There were 31 contestants in the senior division and 15 juniors.

EARN MORE MONEY FROM YOUR STEERS THIS YEAR!



Here is the way you can do it —

Place Red Rose 32 Beef Cattle Supplement or Red Rose 50 Beef Cattle Supplement in your feed troughs! These supplements are concentrated sources of essential ingredients which provide nutrients in proper levels and in correct ratio to overcome grain and roughage deficiencies. Combined with your grains and roughages these supplements make **balanced, high-production rations** for your steers. You'll be pleased with the efficiency and economy of your mixes when you use Red Rose Supplements, and you'll be assured quick gains, too.



This is a complete supplement containing urea as a protein extender — fortified with high levels of vitamins A and D, trace minerals, and an adequate level of phosphorus. You can use 32 Beef Cattle Supplement as a mixing ration for your home grains, or as a protein supplement to balance the feeding of low protein roughages.



Use this supplement (meal form) as a mixing supplement or as top feeding on corn and cob chop. Feed it at the rate of one pound per head per day.

You'll make high production rations for your steers when you use Red Rose Supplements. Your steers will reach market weights faster — and you'll be pleased with the fine condition of your herd, too. Don't wait — start using these supplements now. See your dealer.



S-O-S

This feed is the answer to burned out or failing pastures due to drought conditions. Eshelman S-O-S (Sack-of-Silage) is a big bag of feed — containing 170 to 180 quarts. It's a succulent, bulky, palatable ration — preferable to citrus or beet pulp. Make S-O-S a part of your feeding program . . . now.

FOR ALL OF YOUR FEED NEEDS CALL
THESE RED ROSE DEALERS:

Walter Binkley & Son
Lititz

Brown & Rea
Atglen

Elverson Supply Co.
Elverson

L. T. Geib Estate
Manheim

I. B. Graybill & Son
Refton Strasburg

E. M. Heisey
Mt. Joy

Heistand Bros.
Elizabethtown

A. L. Herr & Bro.
Quarryville

David B. Hurst
Bowmansville

Mountville Feed Service
Mountville

Musser Farms, Inc.
Columbia

Musser's Mill
The Buck

Chas. E. Sauder & Sons
Terre Hill

Ammon E. Shelly
Lititz

L. M. Snively
Lititz

E. P. Spotts, Inc.
Honey Brook

H. M. Stauffer & Sons, Inc.
Witmer