

## Gingrich Named As Hay Matures Its Digestibility Declines

John H. Gingrich, manager of New Holland Sales Stables, Inc., New Holland, was recently named President of the Pennsylvania Livestock Markets Association at the annual meeting of that group in Harrisburg.

The newly elected president who has had more than 30 years experience in the livestock market business, said that the Pennsylvania Certified Livestock Markets making up the state organization completed plans at the annual meeting for state-wide promotion and advertising of their business and services.

Gingrich will attend a meeting of over 40 state livestock marketing association presidents in Kansas City, Missouri, in September.

## Agway Committee To Pick Board Candidate

Agway member-committee men for the Lancaster area will be among farmers from southern Pennsylvania and Maryland who will meet August 10 in Boiling Springs, Pa., to select a district nominee for election to the Agway Inc. board of directors.

Designated to attend from this area are Charles L. Groff, Roy B. Stoner, Willis Z. Esbenshade, Paul G. Hershey, John W. Melhorn, Jr., J. Robert Musser, Amos H. Funk, Mark W. Hosler, Warren K. Witmer, Graybill Gible, Paul G. Ruhl, Melvin Stoltzfus, Fred Bieneman, Lloyd Keller, Samuel Dum, Carl B. Herr, James W. Martin and Henry E. Shenk.

The meeting will be held in Allenberry Inn according to Charles C. Burkens, unit

The amount of hay eaten by sheep and cattle, and the digestibility of the hay, varies with the hay's maturity, according to results of a two-year study at the University of Delaware Agricultural Experiment Station. A publication describing these results has recently been released.

The three orchardgrass hay varieties studied were Latar, which is slow maturing, S-37, intermediate, and Common, fast maturing. Each variety was harvested on May 9, 22 and June 8 or 9 during both years of the study and was fed to 70 sheep and rabbits. The findings also apply to cattle, the authors point out.

Latar was the most digestible variety, with S-37 ranking second and Common third. The date of cut was responsible for the difference in digestibility, which decreased with the advancing maturity of the hays.

Crude fiber and gross energy composition were equal among the varieties, but Latar contained the most protein, S-37 was second and Common had the least protein. The study suggests that among grass hays with an equal fiber content, the one with the highest protein content is the one eaten in the largest daily amount.

However, the amount consumed by the sheep was affected more by the date of cut than by the variety of hay, since the crude fiber content depends more upon the maturity of the hay. The research indicates that a general date

manager

The candidate named at Boiling Springs will stand for election to a three-year term on the Agway board. Election will take place at the stockholders annual meeting, Oct. 20-21, in Syracuse, N.Y.

of cut could be applied within a geographical area with regard to the grass variety. The name, United States of America, originated when it was written into the Declaration of Independence.



MANHEIM YOUNG FARMERS recently toured the Agrico fertilizer plant in Baltimore as guests of Roy Zimmerman of Agrico. Forty chapter members and their friends were shown some of the techniques the company uses in processing fertilizer. Following the tour, the company took the farmers to dinner.



## FARM LOANS

Many local farmers borrow at our Bank. If you need cash to run your farm — see us soon.

**BANK HOURS:** Main Office, Millersville and Manheim Twp. Branch:  
Mon. thru Thurs. 9 a.m. to 3 p.m.; Fri. 9 a.m. to 6 p.m.  
Lititz Branch: Mon. thru Fri. — 8 a.m. to 2 p.m.; Fri. 5 p.m. to 7:30 p.m.

All Drive In Windows and Walk Up Window Open Until 6 P.M. Monday through Friday except Manheim Twp. Branch open 'til 8 p.m. Fri.

FREE PARKING at places listed below. Bring parking ticket to Bank for validation. Any Buhrman Parking Lot

Grant Street Parking Lot — 48 W. Grant St.

Kendig Parking Lot — 36 S. Queen St.

Hager's

Watt & Shand Parking Garage

Swan Parking Lot — Vine & Queen Sts.

Stoner Parking Lot — Corner Vine & Queen Sts.



LANCASTER, PENNSYLVANIA

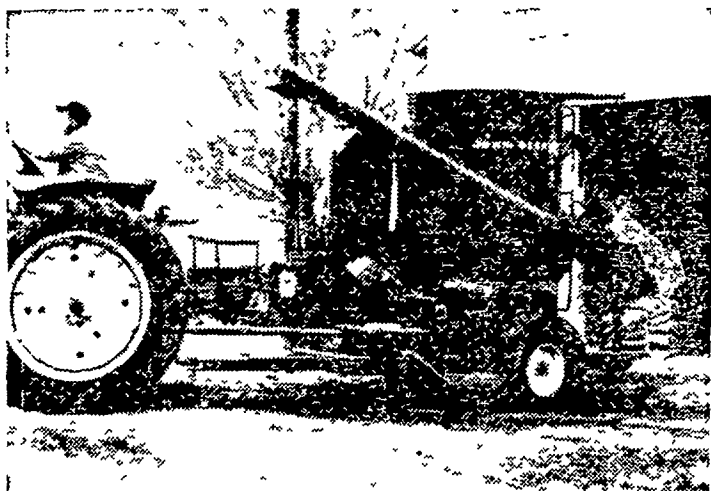
"Serving Lancaster from Center Square since 1889"

MILLERSVILLE BRANCH 302 N. George St.

LITITZ SPRINGS BRANCH Broad and Main Sts., Lititz

MANHEIM TWP. BRANCH 1415 Lititz Pike, Lanc.

Maximum Insurance \$10,000 per depositor  
A Trustee for the Lanc. Co. Foundation  
Member Federal Deposit Insurance Corporation



## New John Deere Grinder-Mixer Processes 82 Bushels in Minutes

Grind an 82-bushel tankful of your mix in 10 to 20 minutes . . . add concentrates or hay as you grind . . . mix on the way to the feedlot and unload in 5 minutes or less. That's the kind of time- and labor-saving performance you can expect from the new 400 Grinder-Mixer. Stop in soon and see this convenient and durable outfit.



Use our convenient, confidential Credit Plan

Alan Beyer

Christiana LY 3-5687

M. S. Yearsley & Sons

West Chester 696-2990

Wenger Implement Co.

Buck BU 4-4467

Shotzberger's

Elm 665-2141

A. B. C. Groff, Inc.

New Holland 354-8001

Landis Bros. Inc.

Lancaster 393-3906