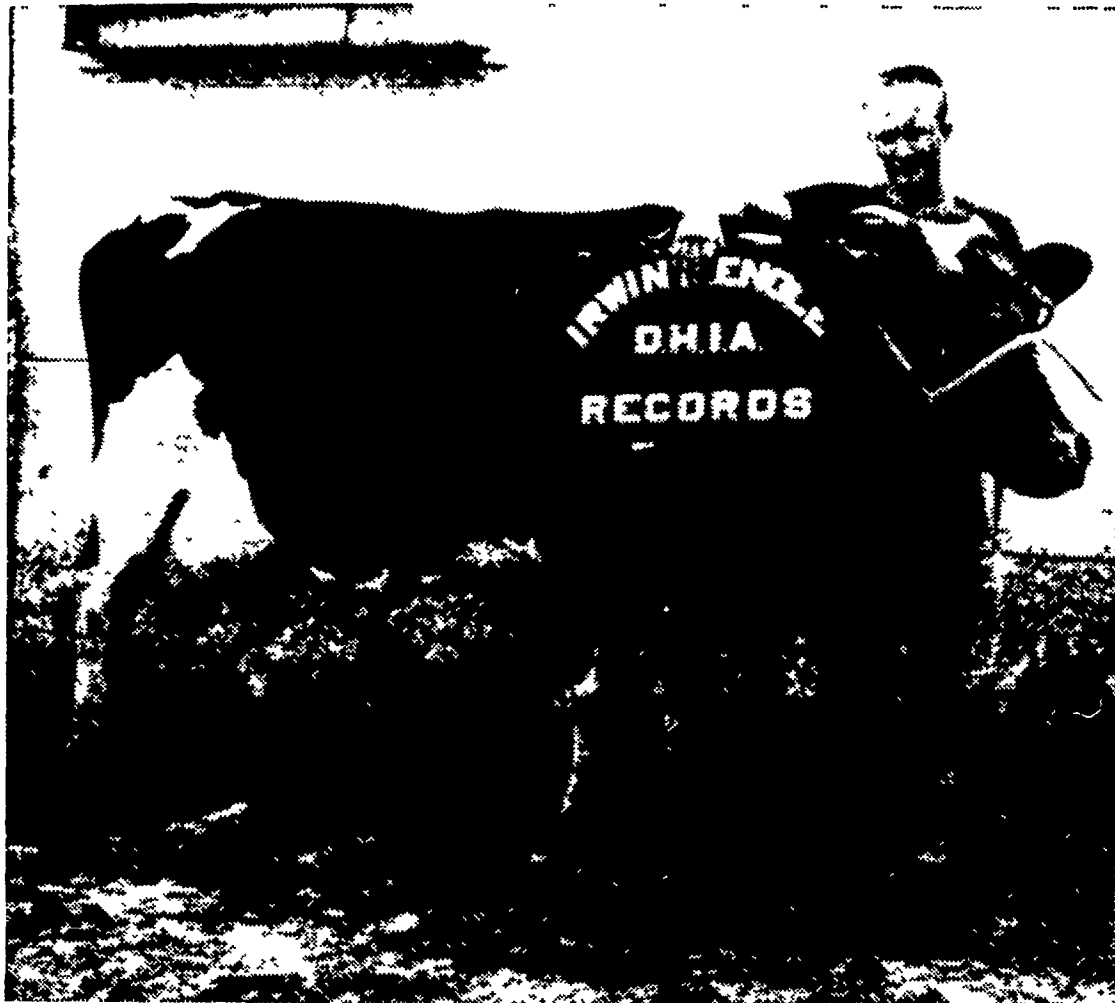


IRWIN ENGLE ATTRIBUTES DAIRY HERD SUCCESS TO FEED PROGRAM



Irwin Engle, R. D. 1, Marietta, with "Betsy".

Irwin Engle's excellent herd management and feed program have produced these results:

- 1965 Herd Average for 41 cows —
14,051 lbs. of milk; 519 lbs. of fat
- "Betsy" — a six year old tested in 130 days this year —
12,877 lbs. of milk; 447 lbs. of butterfat
- "Lynett" — current record of 247 days —
18,671 lbs. of milk; 644 lbs. of fat

Last Year — 16,321 lbs. of milk; 621 lbs. of butterfat

Mr. Engle's feed program consists of FLORIN 16% DAIRY — a highly palatable, coarse textured, high energy feed.

Mr. Engle stated, "My milk production has been increasing every year."

We would be pleased to assist you in developing a profitable dairy feeding program for your herd.



Wolgemuth Bros., Inc.

MOUNT JOY, PENNA.

Ph. 653-1451

Saturday, July 30, 1966—7
Lancaster Farming,

● New Holland

(Continued from Page 2)

FEEDER STEERS — Standard and Good 600-910 lbs 21-85-24.00, Standard 19 00-21 00
CALVES 338 — Good and Choice Vealers steady, Cull to Standard 1 00-2.00 Lower. Choice 33 50-37 00, Good 31 50-34 00, Standard 29 00-32 00, Utility 26 50-28 00, Cull 24 00-26 50, 70-90 lbs 19 50-25 00

COWS

July 27, 1966

Fresh cows sold steady with 61 head offered, but backward springers were slow this week. Fresh Holsteins, 300 450 other breeds, 175 250 No bulls offered The 17 heifers sold for 200 300

HORSES

July 25, 1966

Receipts totaling 336 head sold slow and averaged \$15 per head lower Riding horses, 100-300, driving horses, 125-250, killers, 5 5/2 cents per lb A few pairs of mules brought 240 300 Pony mares, 20 80, geldings, 15 80

HOGS

July 25, 1966

Hogs averaged 35c to \$1 higher as 560 head sold Retail, 27-27 75, wholesale (U.S. 1-3), 26 75-27 25, heavyweights, 25 26 No sows or shoats listed

CALVES

July 25, 1966

\$1-\$2 higher was the calf trend this week with 127 head on the block Choice and Prime, 32-36 50, Good and Low Choice, 30 31 50, Standard, 28-29 50, Common, 20-27

● Lancaster

(Continued from Page 2)

lbs 23 75-25 50, Load Standard 900 lbs. \$22 00.

CALVES 525 — Vealers fully steady with some strength on Good and Choice Choice 34 00-37 00, Few head 37.50-39.00, Good 31.00-34 50, Standard 27.00-31 00, Utility 26 00-29.00, Cull 21 00-26 00

HOGS 1000 — Barrows and gilts 50-75c Higher with Small supply Sows mostly 50c Higher.

BARROWS AND GILTS

US 1-2 190-240 lbs 27 00-27 25, US 1, 200-235 lbs 27 50-27 75, US 1-3 190-250 lbs 26 25-26 75, One Lot US 1-2 180 lbs 26 10, 2-3 230-260 lbs 25 00-26 00, 260-285 lbs 24 50-25 50

SOWS

US 1-2 300-375 lbs. 20 50-21 50, few \$22 00, 2-3 400-600 lbs 18 50-19 50

SHEEP 350

Spring lambs 50-1 00 Higher Ewes scarce. Choice 75-100 lb Spring Lambs \$23 50-25 00, Good 60-95 lbs. 21 50-23 50, Utility 60-90 lbs. 18 00-21 00, Few 40-70 lbs 15-00-18 00

● Vintage

(Continued from Page 2)

CALVES 595 — Vealers fully \$2 00 Higher, some sales \$3.00 Higher Choice 32 00-34-50, Good 30.50-32 00, Standard 28.00-30 50, Utility 25 50-28 00, Cull 22 00-25 00, 70-90 lbs 18-00-23.00, 50-65 lbs 14 00-19 00.

HOGS 197 — Barrows and gilts steady to 25c Higher, with an increased showing of US 1-2

BARROWS AND GILTS

US 1-2 200-230 lbs 27 00-27 25, US 1-3 190-245 lbs 26 50-26 85, US 2-3 235-255 lbs 26 10-26 50, US 1-2 177-198 lbs 25 00-25 75.

SHEEP 110

Spring Slaughter lambs fully steady Choice 70-95 lbs. 22 50-25 50, Good 21.00-23 00, Utility 17 50-21 00.

HOGS

July 23, 1966

Hogs averaged \$1 higher as 179 head sold Lightweights, 25-60-26 10; 180-200 lbs 26-27.35, 200-220 lbs, 26 35-27 50; 220-240 lbs, 26 10-26 60 Sows brought 17-18 25.