

4-H Citizenship
(Continued from Page 1)
part from Lancaster County are Dennis Allen, Quarryville R2; Judy Buckwalter, Lititz R3; Averil Royer, 2025 Oregon Pike, Lancaster; and Nancy Risser, Leola R1.

During the week the group will have a chance to visit with their District Congressman at his Washington office in the House Office Building. The entire program will originate from the National 4-H Club Center in Washington. Members will be housed in the dormitory there and will receive their meals in the cafeteria.

The week's program will consist of many outstanding speakers and discussion groups concerning various phases of Citizenship responsibility. These usually are conducted in the morning and field trips to points of educational interest in the Washington area are conducted during the afternoon of each day.

The four delegates from Lancaster County will be reporting to their local clubs and also will be utilized in County-wide 4-H programs concerning their Citizenship experience, when they return.

County FFA
(Continued from Page 1)
have their animals there on the 21st, between 3 and 8 p.m. The show will start at 1 p.m.

Applications for the dairy calves, given annually by each of three county breed associations, are due September 4th, at the monthly meeting of county vo-ag teachers, it was announced. Individual interviews for the awards will be held at the time of the county FFA meeting, September 26.

All FFA and FHA chapters in the county are invited to enter the window exhibits to be held in conjunction with the Manheim Fair, October 5-7. Red Rose Chapter president Robert Weaver reported on the State FFA Week held recently at Penn State University.

Plowing Contest
(Continued from Page 1)
Holland, Ivan Yost, Narvon R2; Ronald Kline, Lititz R3; Everett Kreider, Quarryville R1; and Jay Rohrer, Manheim R2.

Entries will close today, still room for two more plowers before the desired limit of ten entries is reached. Contact Aaron Z. Stauffer at Ephrata R1, or Forney Longenecker.

For those who are not interested in the plowing contest, the Field Day which begins at 9:30 a.m. and runs until about 3 p.m., promises many demonstrations and activities to interest young and old. There will be wagon tours, archery and fishing demonstrations, and many exhibits by the District's cooperating agencies. These events will be held on the next farm to Gerbs, the Homer Graybill farm, also at Manheim R3. If it rains Tuesday, the contest will be held on Thursday.

Pig Chase
(Continued from Page 1)
critter somewhat more running room than last year's loser enjoyed. It was decided by the SWCD directors that any boy who wins a pig chase can not enter the following year's event. If he is not too old by the third year, he may reenter. This means that last year's

pig catcher, Eugene Bollinger of Denver R2, will be ineligible to compete. Bollinger probably set some kind of record last year when he had the shoat hog-tied and back to the finish line within 1 1/2 minutes!

Anybody want to break that record? Even if he doesn't break it, the winner still gets a good, 50-pound gilt, and the losers have some fun competing for this choice prize. The pig will be donated by Eby's Feed Mill, Lititz, again this year. Remember the time—right after the plowing contest, which starts at 1 p.m. The place will be the Homer Graybill farm at Manheim R3. In case of heavy rain on Tuesday, come by Thursday.

ABC Meeting
(Continued from Page 1)

that "there is an extraordinary correlation between the height and weight of these animals". For example, if his height is so much, his weight can be predicted closely, and vice versa.

The ladies guessed the

while cow beef sold 1.00-2.00 lower.

SLAUGHTER STEERS — Prime 1120-1375 lbs. 26.75-27.00, with two loads at the latter price. High Choice and Prime 1150-1430 lbs. 25.75-26.50. Choice 900-1300 lbs. 25.00-26.25, largely 25.25-26.00 at mid-week. Mixed Good and Choice 24.25-25.25, Good 23.00-24.50. Standard and low Good 22.00-23.25.

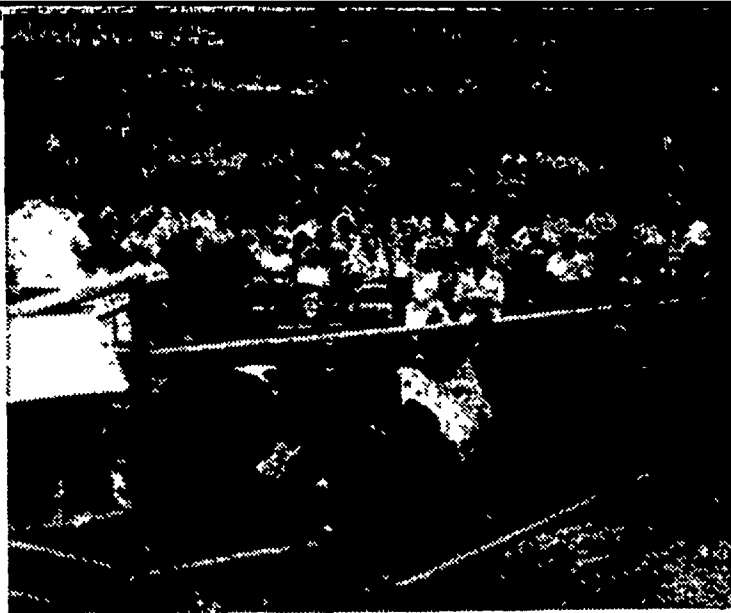
Death travels swiftly, but most speeders can catch it.

height and weight of a Jersey bull, and the men guessed on a Holstein. There were three winners in each case.

Winning in the women's division were: Mrs. Mark Mumma, Elizabethtown R3; Barbara Nolt, Ephrata R1; and Mrs. Sonya Ream, Masonic Homes, Elizabethtown.

Men winners were: Irvin W. Nolt, Ephrata R3; E. Richard Burkhart, Manheim R4, and Richard K. Metzler, Manheim R1.

All the winners but one selected cow models from the display of prizes.



ROMANDALE DIVIDEND PERFORMER stands patiently in the foreground while sire analyst Harry Roth describes this ABC bull's attributes to the crowd of close to 400 dairymen and their families, a few of which may be seen here. Performer's maternal brother, Roth told visitors at the ABC meeting, has sired some of the outstanding cattle in Canada. ABC Photo

WE USE QUALITY PAINT AND IT DOES STAY ON!!!



Aerial Ladder Equipment Used To Paint Your Farm Buildings For Prices Contact

C. RALPH MILLER
Spray-on and Brush-in Painter

R. D. 4, Manheim, Pa. Ph. 665-3388

For The Man Who Wants BIGGER YIELDS

These Alfalfa Varieties Available Now For Fall Seeding

- | | |
|------------------|------------------------|
| Haymor | Certified Buffalo |
| DuPuits | Certified Narragansett |
| 919 Brand | Certified Cayuga |
| 10-19 Brand | Certified Saranac |
| Certified Vernal | Certified Ranger |

See Your Hoffman Seed Man or call

A. H. HOFFMAN SEEDS, INC.
LANDISVILLE, PA. 898-2261

CONSISTENT QUALITY means more milk profits

Consistent quality in Mueller bulk tank manufacturing assures you a high quality performance in the milk house where it pays off in profits. Economical direct-expansion refrigeration in both "atmospheric" and "vacuum" models . . . sizes from 90 to 2000 gallons . . . built-in controls and either remote or self-contained condensing units. CIP cleaning is an optional choice. Whatever features you prefer, they may be found in one of the varied Mueller models . . . come in and let us give you the complete story. Ask about our economy model "R" series

MUELLER bulk milk tanks

L. H. BRUBAKER
R. D. 3, Lititz, Pa.
350 Strasburg Pike, Lancaster
Phone: Lanc. 397-5179 — Strasburg 687-6002 — Lititz 626-7766

DAIRYMEN-CATTLEMEN

Here's the answer to your MANURE PROBLEMS

EASY WAY MANURE DISPOSAL SYSTEM

Saves Time—Saves Fertility

Just scrape or wash manure, bedding waste and feed into Easy Way holding tank. When you're ready, the powerful agitator and self-priming chopper impeller pump will put the homogenized mixture into Easy Way Round field spreader. No clog—no mess—no stink.

For complete information on the **EASY WAY DISPOSAL SYSTEM** write to:

CALEB M. WENGER
R. D. 1, Drumore Center KI8-2116, QUARRYVILLE, PA.