

# Weekly Poultry Report

## Eastern Pennsylvania And New Jersey WEEKLY SUMMARY

### LIVE HENS

Prices on light hens declined ½c. Supplies limited and short of full requirements. Occasional processors not running hens due to the active interest for broilers and fryers. Offerings ample on heavy hens. Buying interest light. A few bids were noted at 16c. Prices paid at farms: Light hens 9-10½c; Heavy hens too few sales to report.

### Fogelsville

July 5, 1966

Hens, Light 9½-11½; Hens, Heavy 8-23½, mostly 15-22; Pullets 20-30, mostly 24-27½; Roasters 15-28; Turkeys, Hens 24-28½; Rabbits 10-30, mostly 22-28 Pigeons (per pair) 57½-100, mostly 62½-70; Jumbo Squabs 77½.

Total Coops Sold: 308.

## Eastern Shore Exchange WEEKLY SUMMARY

Lot average broiler and fryer prices for the three-day week, Tuesday through Thursday, declined more than ¼

cent to a level of 14.80 cents per lb.

Prices paid during the week ranged from a low of 13.9 cents on Tuesday to a high of 15.8 cents per lb. on Wednesday.

Sales for the week held strong at 1.3 million head, down only slightly from the preceding week.

### Delmarva

July 8, 1966

Delmarva broiler and fryer lot average prices advanced nearly ½-cent today to a level of 15.08 cents per lb. Demand good for moderate auction offerings. Live supplies adequate for needs, though sizes often lighter than desired as result of hot weather.

Estimated slaughter for Friday and Saturday, 1,075,000 head, practically unchanged from the preceding week.

In the 24 hours preceding market close today, prices paid at farms for broilers and fryers ranged 14.2-15.7 cents per lb. on reported sales totaling 12 million head.

### Chicago

(Continued from Page 2)

26 25 Choice 900-1400 lbs 24-75-26 25, mostly 24 75-25.75, on Wednesday, Mixed Good and Choice 900-1350 lbs 24 25-25-25, Good 23.00-24.75, Standard and Low Good 22 00-23 75

SLAUGHTER HEIFERS — High Choice and Prime 850-1090 lbs. 24.75-25.50, with four loads at latter price Tuesday, Choice 800-1075 lbs. 23.50-25. Mixed Good and Choice 23.00-24.25, Good 21.25-23 25, Standard and Low Good 20.00-21.50.

### New Holland

(Continued from Page 2)

75; geldings, 15-75. No mules were offered.

### HOGS

July 4, 1966

Hogs averaged 50 cents lower as 680 head sold. Retail, 26.75-27 75, wholesale (U.S. 1-3), 26-26.75; heavyweights, 25-26 The 14 shoats offered brought \$17.

### CALVES

July 4, 1966

Eighty head averaged \$1.50 lower this week with Choice bringing 32-34; Good and Low Choice, 30-31.50; Standard, 28-30. Common, 18-26 50.

### Lancaster Auction

(Continued from Page 2)

US 1-2 215-240 lbs 26.25-26.50, One Lot 26.75, 2-3 240-250 lbs 25-25.50. US 1-3 350-500 lbs. Sows 18.50-19.50.

SHEEP 101 — Spring Lambs steady to 50c Lower.

SPRING LAMBS — Utility 65-100 lbs 20-21 50, One Lot Good 98 lbs \$22 50, and One Lot 111 lbs. 19.50

SLAUGHTER EWES — Utility and Good 4 50-7.

# Weekly New York Egg Mkt.

From Monday, July 4th to Friday, July 8th

	Mon.	Tues.	Wed.	Thurs.	Fri.
<b>WHITE</b>					
Ex. Fcy. Hywts.	37	37	37	37	38
Fcy Hywts.	35	35	35	35	36½
Fcy. Med.	27	27	27	27	27½
No. 1 Med.	27	27	27	27	27
Pullets	23½	23½	23	23	21½-22
Peeweese	16½	16½	16½	16½	16½
<b>BROWN</b>					
Ex. Fcy. Hywts.	37½	37½	37½	37½	38
Fcy. Hywts.	37	37	37	37	37½
Fcy. Med.	28	28	28	28	28
Pullets	24	24	24	23	21½-22
Peeweese	17	17	17	17	17
<b>MIXED</b>					
Fcy. Hywts.	35	35	35	35	36½
Standards	32	32	32	32	33
Checks	26½	26½	26½	26½	26½

TREND: Market showing a better movement on Large; small sizes still a bit irregular; Extra Large and Jumbo acutely short.

Copyright 1966 by Urner Barry Publications

### Lancaster

(Continued from Page 2)

most advance on Utility to Good. Good and Choice Vealers 32-36 50, Standard 30 50-32, Utility 29-31.50, Cull 21-27 50, few 65-85 lbs 20-22

HOGS 1050 — Barrows and gilts steady to 25c Lower than last weeks close. Sows fully steady

BARROWS AND GILTS — US 1-2 190-240 lbs. 26 25-27 25, late sales mainly 26 25-26 50, few US 1, on Tuesday 27 50-

28, US 1-3 185-245 lbs. closed the week at 25.50-26, 2-3 230-250 lbs. 25-25 50, few 250-270 lbs 24-25.

SOWS — US 1-3 350-500 lbs. 18 50-19 50

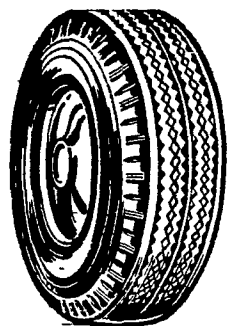
SHEEP 200 — Spring lambs steady to 50c Lower. Ewes steady to weak. Choice 60-90 lb Spring lambs 25-25 50, Good 60-100 lbs. 22 50-25, One Lot 111 lbs 19 50, Utility 65-100 lbs 20-21 50

SLAUGHTER EWES — Utility and Good 4 50-7.



# Last Call!!

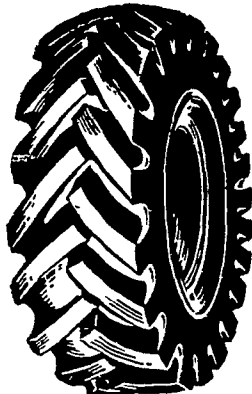
## Co-op and Unico



## Quality Tires

## MUST GO!

CLEAR THE DECKS!



## TIRE SALE FOR QUALITY

AT PRICES YOU CAN'T AFFORD  
TO PASS UP!

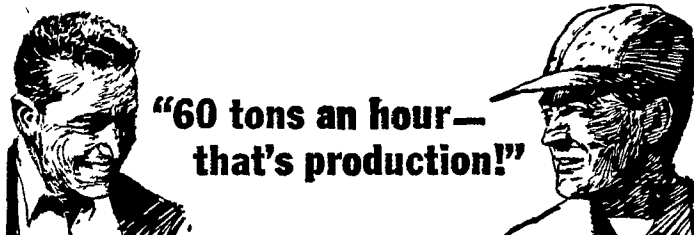
## SALE ENDS JULY 15

This sale is at the right time for your vacation trip  
ASK ABOUT ADDITIONAL DISCOUNT FOR  
QUANTITY PURCHASES

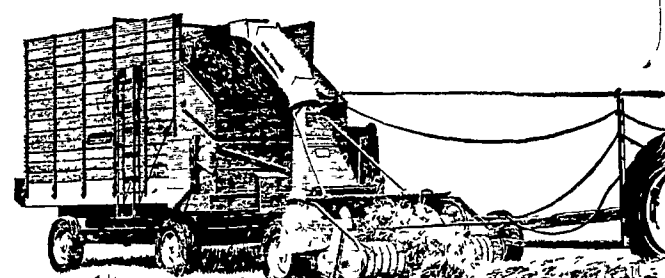
CALL YOUR NEAREST STORE TODAY!

Lancaster New Holland Quarryville Honey Brook

**Agway Agway Inc. Agway**



"60 tons an hour—  
that's production!"



**Big capacity, uniform cut, with  
Allis-Chalmers 780 Forage Harvester!**

The 780 with pick-up head uses 64 fingers to comb the windrows and feed a steady stream to the six 36" Cut-and-Throw knives. Knives adjust to the shear bar for clean cut... 7/32" to 2¼". Direct-cut head takes 6½-foot swath. Or switch to 1 or 2-row corn head in season. Chop fine forage fast with a 780!

L. H. Brubaker  
Lititz, Pa.

N. G. Myers & Son  
Rheems, Pa.

Chet Long  
Akron, Pa.

Nissley Farm Service  
Washington Boro, Pa.

Grumelli Farm Service  
Quarryville, Pa.

L. H. Brubaker  
Lancaster, Pa.

Allen H. Matz Farm Equipment  
New Holland