

JUN 28 1966

Lancaster Farming

VOL. 11 NO. 30

Lancaster Farming, Saturday, June 25, 1966

\$2 Per Year



EVEN THE SHADOWS ARE SHRIVELED on this picture of some thirsty corn seen in the Lititz area this week. Although crop conditions seem to vary from section to section, and even from farm to farm, there is some general curling of corn leaves beginning in most northern areas of the county. L. F. Photo

First Summer Job Brings Questions On Taxes For Working Teenagers

Many Delaware teenagers will take jobs for the first time during this summer vacation, according to W. T. McAllister, extension farm management specialist at the University of Delaware. Some teenagers will be working for their parents on the farm while others will work for outside employers. Whatever the job, going on a payroll for the first time often raises questions about the income tax and social security tax for part-time and summer employees.

In most instances an employer will require the employee to apply for a social

security number when he begins the job. Social security tax will be deducted from the employee's social security account. As a general rule, McAllister points out, a teenager working for his parents does not qualify for social security. No payment is withheld from

(Continued on Page 5)

FFA Activities Will Be Week's Feature At PSU

Next Wednesday some 1200 Future Farmers from all over Pennsylvania will be gathering at Penn State University for the annual FFA Activities Week.

This annual event features contests and educational demonstrations and the yearly business meeting of the association. Fifteen judging contests are scheduled for the first day, to be followed by educational tours and demonstrations on Thursday. The program will conclude on Friday, July 1.

The annual combined meeting of the FFA and the Future Homemakers of America (FHA) will be held the night of June 29. This event will feature an FFA band and chorus, and an FHA chorus. Speaking briefly will be the State FFA president, Dennis Gumbine of Myerstown R2, the State FHA president, Mary Margaret Mc-

(Continued on Page 6)

'New Farm' Wheat Allotment Applications Due By July 1st

Any Lancaster County farm which did not have a 1966 wheat allotment, and wishes to be considered for a 1967 allotment for winter wheat, must contact the Agricultural Stabilization and Conservation Service office by July 1. Applications can not be accepted after that date, ASCS reports.

A producer eligible to file such an application is one with a farm for which no wheat allotment has been established, and for which neither the owner nor the operator has an interest in the wheat allotment on any other farm and who has available land

(Continued on Page 12)

Construction To Begin On Farm And Home Center By Late This Summer

Construction of the Lancaster County Farm & Home Center is scheduled to begin later this summer, according to an announcement this week by B. Snavely Garber, president of the board of directors of the Farm & Home Foundation.

Bids on the construction job will be let July 15th, Garber said, adding that about three weeks after that date the contractor should have been selected and building plans can proceed.

Although the original fund drive goal of \$375,000 has not been met at this time, a total of \$226,000 in cash and pledges has been collected. This will be sufficient to get started, Garber said, and a continuing fund raising campaign will be relied upon to complete the building as shown in the architect's sketch below.

In considering the immediate construction with limited funds, the board decided to concentrate on the office section of the building. When fully rented, the offices will have an income potential of \$26,000 a year, Garber explained.

This one story masonry building will serve as headquarters for the farmers of Lancaster County and will house the offices of the Agricultural Extension Service, the County ASCS, Soil Conservation Service, Farmers Home Administration, and the Lancaster County Superintendent of Schools.

These facilities will include a large conference room for the use of the office holders, a general meeting room, and a demonstration kitchen for the extension training program.

The multi-purpose room, shown at the left side of the sketch, will accommodate 600 people, and will have a serving kitchen in conjunction. That

(Continued on Page 5)

Pioneer Poultry Laboratory Will Be Rebuilt

The U. S. Department of Agriculture's Regional Poultry Research Laboratory at East Lansing, Mich. — a leading center in poultry disease studies since 1938 — will be rebuilt and enlarged under an agreement with Michigan State University.

The laboratory, part of USDA's Agricultural Research Service, conducts investigations to isolate and control the agents causing avian leukosis. This disease caused more than 8 million condemnations at boiler processing

(Continued on Page 6)

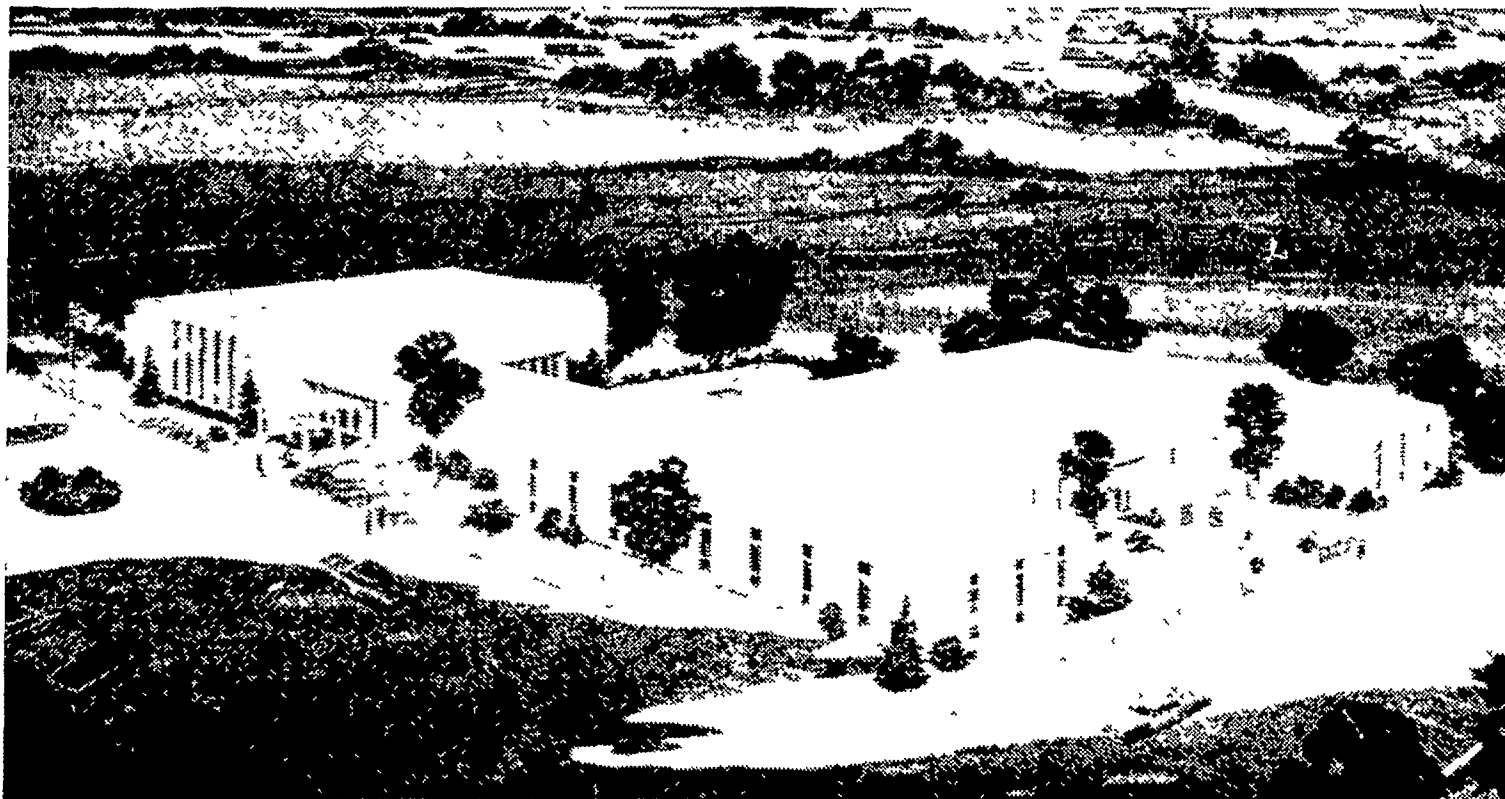
Improved Process For Producing Dry Whole Milk Patented By PSU

An improved process for producing dry whole milk, patented by The Pennsylvania State University, may help solve the problem of the world's milk supply.

The process will produce dry whole milk with significantly improved taste and odor qualities compared with products from conventional processing.

(Continued on Page 8)

ARTIST'S SKETCH OF THE PROPOSED LANCASTER COUNTY FARM & HOME CENTER



Farm Calendar

- June 27 — 9 a.m., FFA daily judging workshop at Ephrata High School
- June 28 — 7:45 p.m., 4-H County Council meeting at Lititz Recreation Center to finalize Field Day plans
- June 29 — 29, 30, and July 1, FFA Week at Penn State University
 - 12 noon, Penn Manor 4-H Cooking Club at Penn Manor High School
 - Special trip by Red Rose 4-H Baby Beef & Lamb Club members to Adams County
- June 30 — 7 p.m., Area Dairy Princess Pageant at Host Motel, Lancaster.