

# Weekly Poultry Report

## Eastern Pennsylvania And New Jersey WEEKLY SUMMARY

### LIVE HENS

Prices unchanged for light hens. Demand fair. Offerings less freely available due in part to heavy movement in recent weeks & advancing shell egg market prices. Trading limited on heavy hens. Offerings light. Demand limited. Prices paid at farms: Light hens 10-11, mostly 10½-11c; Heavy hens too few to report.

### Fogelsville

June 14, 1966

Hens, Light 9½-11½, mostly 10-10½, Heavy 10-26, mostly 16-21; Pullets 15½-32½, mostly 22-30, Roasters 11-32½, mostly 20-28, Ducks 26½-35½; Turkeys, Hens 21-31, mostly 26-30; Rabbits 26-49, mostly 45-49, Guineas 75-100, mostly 95-100; Pigeons (per pair) 60-92½, mostly 70-80, Jumbo Squabs 75-92½, mostly 75-80.

Total Coops Sold. 803

## Robert K. Rohrer

**Bulldozing - Grading  
Patz Sales & Service**

**Barn Cleaners - Silo  
Unloaders - Cattle Feeders**

**Quarryville, R. D. 1  
Hensel 548-2559**

## Eastern Shore Exchange WEEKLY SUMMARY

Lot average broiler and light prices on the Eastern Shore Exchange declined 1 cent this week to a level of 15.15 cents per lb.

Prices paid during the week ranged from a low of 13.8 cents on Tuesday to a high of 16.6 cents per lb on Thursday.

Sales for the week totaled 1.6 million head, an increase of 200,000 head over last week's total.

## Chicago

(Continued from Page 2)

Bulls steady to strong. In the carlot dressed meat trade, steer and heifer beef 50-100 lower, cow beef steady to 50 lower.

**SLAUGHTER STEERS** — Prime 1175-1400 lbs 27.00-27.50, High Choice and Prime 1150-1425 lbs. 25.50-27.25, closing 25.50-26.75, Choice 900-1450 lbs 24.75-26.50, Mixed Good and Choice 900-1350 lbs 24.25-25.50, Good 23.00-24.75, Standard and Low Good 22.00-23.75.

**SLAUGHTER HEIFERS** — High Choice and Prime 850-1150 lbs 25.00-25.50, two lots mostly Prime 1000-1100 lbs. 25.75-26.00, Choice 750-1100 lbs. 23.50-25.25, Mixed Good and Choice 23.00-24.25, Good 21.00-23.75, Standard and Low Good 20.00-21.75.

**COWS** — Utility and Commercial 18.25-19.50, High Yielding Commercial and Standard 19.50-20.25, Canner and Cutter 16.50-18.75.

## Lancaster

(Continued from Page 2)  
Several 1400-1900 lbs 25.15-26.50, Few Individual 27.00-27.60

**FEEDER STEERS** — Good and Choice 550-650 lbs 23.00-30.50, Few lots Good 400-450 lbs 27.00-23.00, Choice 600-650 lbs 27.50-29.50, Choice and Prime 927-1090 lbs 26.50-27.00, Good and Choice 550-650 lbs 24.75-27.00

**CALVES** 749 — Vealers mostly \$3.00 lower, Choice 37.00-42.00, few head \$43.00 early, Good 34.00-39.00, Standard 32.00-38.00, Utility \$30.00-35.00, Cull 24.00-32.00.

**HOGS 1112** — Barrows and gilts 25-50c lower

**Barrows and Gilts** — US 1, 200-230 lbs \$27.00-27.50, US 1-2 190-230 lbs 26.25-26.75, few \$27.00, US 1-3 190-230 lbs \$25.75-26.25, US 2-3 240-260 lbs. 24.75-25.75.

**SHEEP 401** — Spring Lambs \$1.00-2.00 lower, Ewes mostly steady.

**SPRING LAMBS** — Choice 60-90 lbs 26.00-28.00, Good 60-90 lbs. 24.00-27.00, Utility to Low Good \$22.00-25.00

**SHORN EWES** Utility and Good with No 1 and 2 pelts \$6.00-10.00, Good 71 lb feeding lambs \$20.00, Choice 67 lb Feeding lambs \$22.00.

## Lancaster Auction

(Continued from Page 2)  
32.00-35.50, Utility 30.00-33.50, Cull 24.00-30.00.

**HOGS 176** — Barrows and gilts about steady. US 1-2 190-230 lbs. 26.25-26.75, Lot 213

**WORST ADVICE EVER**  
"If it hadn't been for your confounded advice I wouldn't have lost every dollar I had"

"You can't say that," returned his broker "I told you to use your own judgment."  
"Well, that's what I did!"

# Weekly New York Egg Mkt.

From Monday, June 13th to Friday, June 17th

	Mon.	Tues.	Wed.	Thurs.	Fri.
<b>WHITE</b>					
EX Fcy Hywts	35½	36½	37½	38	38½
Fcy Hywts	35	36	37	37½	38
Fcy Med	28	28	28	28	30
No 1 Med.	27½	27	27½	27½	29
Pullets	21	22	23	24	24½
Peewees	15-16	16	17	17	17
<b>BROWN</b>					
EX Fcy. Hywts	35½	36½	37½	38	38½
Fcy Hywts.	35	36	37	37½	38
Fcy Med.	27	27	27	27	29
Pullets	21	22	23	24	24½
Peewees	15-16	16	17	17	17
<b>MIXED</b>					
Fcy. Hywts.	35	36	37	37½	38
Standards	32-33	34	34-35	35	36
Checks	26	26	26-27	27	28

**TREND:** Supplies cleared; short on large sizes, closely balanced on others

Copyright 1966 by Urner Barry Publications

lbs \$27.00, US 1-3 190-230 lbs \$25.75-26.25, US 2-3 240-260 lbs 24.75-25.10.

**SPRING LAMBS** — Choice 60-90 lbs 26.00-27.00, Good 60-90 lbs 24.00-26.00, Utility \$22.00-24.00

**SHEEP 86** — Spring Slaughter lambs 50c to Mostly \$1.00 Lower

**FEEDER LAMBS** — Good 71 lbs \$20.00

## CUSTOM SPRAYING

HIGH PRESSURE WASHING

and

DISINFECTING

in all types of poultry houses.

**MAYNARD L. BEITZEL**

Witmer, Pa.

Phone 392-7227

# AGWAY IS ROLLING ---

on a

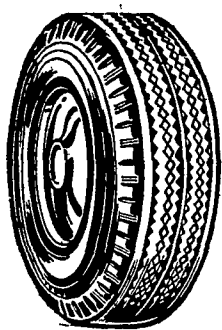
# INVENTORY CLEARANCE TIRE SALE

## LIMITED SUPPLY UNICO MARK II

W-Wall - 775 x 14 tubeless \$18.90\*

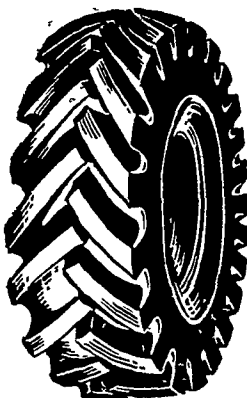
W-Wall - 670 x 15 tube type \$17.78\*

\*State tax to be added



COME IN AND SELECT  
OTHER TYPES AND SIZES  
PRICED TO SELL

PASSENGER CAR — TRUCK  
IMPLEMENT  
TRACTOR TIRES



Additional Discounts For Volume Purchases Over \$250.

SALE PERIOD DURING JUNE

Contact Any of Following Stores

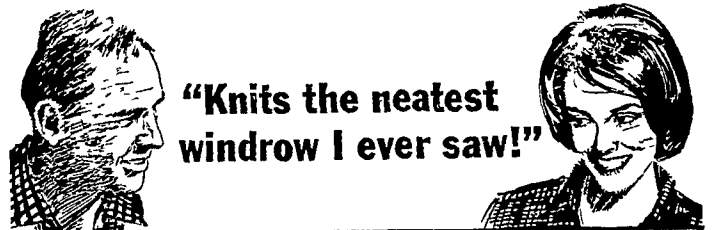
New Holland

Lancaster

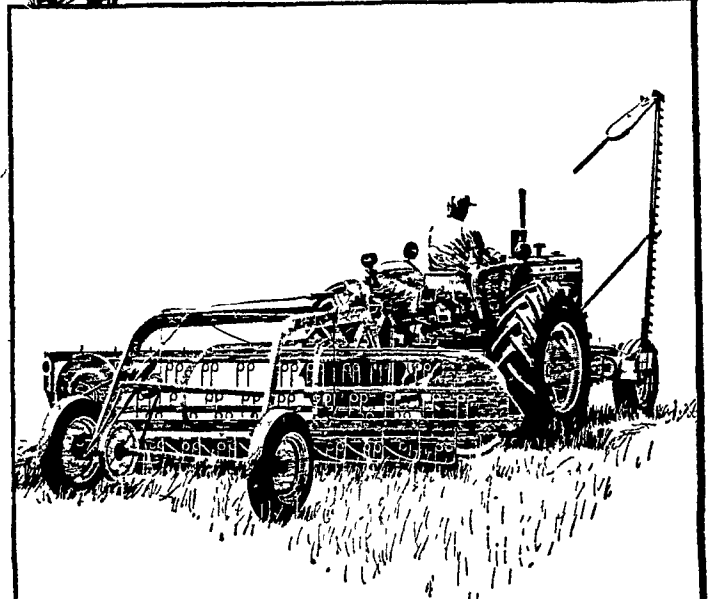
Honey Brook

Quarryville

**Agway Agway Inc. Agway**



"Knits the neatest  
windrow I ever saw!"



Key tool for quality haymaking—  
the Allis-Chalmers Model 77-G Rake!

Here are the three things you want most in a rake!  
Gentle, leaf-saving action... straight, fluffy, fast-curing windrows... and clean work in heavy or light crops. Get these benefits in the Allis-Chalmers 77-G rake. It's fast, quiet and smooth-running. See it now!

**L. H. Brubaker**  
Lititz, Pa.

**N. G. Myers & Son**  
Rheems, Pa.

**Grumelli Farm Service**  
Quarryville, Pa.

**Chet Long**  
Akron, Pa.

**L. H. Brubaker**  
Lancaster, Pa.

**Nissley Farm Service**  
Washington Boro, Pa.

**Allen H. Matz Farm Equipment**  
New Holland