

Vo.-Ag. Teachers

(Continued from Page 1)
On June 17, FFA boys participating in livestock judging will work out at the Lancaster Stock Yards. A practice session, judging dressed poultry only, will be held on June 23 at Victor Weaver's poultry processing plant at New Holland. Dairy judges will work out on June 27 at Ephrata High School. Livestock, poultry and dairy sessions will begin at 9 a.m.

The annual FFA County Hog Show will be held this

year on July 26, the teachers announced. It will be at the Lancaster Stock Yards, and Henry Gruber of the A & B Packing Co. will be the judge. In addition to the main judging contest, Eby's Feed Mill, Lititz, will award trophies for fitting and showmanship performances.

It was announced that applications for County Star Farmer will be due at the teachers' meeting in early August. A limit of one applicant per school has been set this year.

Entries for the Lampeter

Fair calf awards will be due no later than September 7 this year, the teachers stated. This will allow time to interview all applicants and reach decisions on these awards.

The county contour plowing contest is slated for late July. Forney Longenecker, SWCD associate director, announced. He urged all teachers with young and adult farmer classes to encourage their students to enter. "We should have at least one entry from each chapter," Longenecker said.

The July 29 agriculture teachers' meeting will be the

annual picnic, held this year at William Fredd's farm near Quarryville.

FFA Scholarship

(Continued from Page 1)
to attend the College of Agriculture at Penn State University.

He was presented with a \$500 scholarship grant-in-aid at an awards assembly at Solanco High School, as recipient of the fifth annual Kunzler & Company scholarship.

Kunzler's, a Lancaster based packing company which has long been a supporter of farm youth activities, makes this grant available specifically to a student entering the College of Agriculture at Penn State.

Smith has been an outstanding member of the Solanco Future Farmers of America Chapter for four years, and earned the highly-regarded Keystone Farmer Degree in January.

He is president of the Solanco FFA Chapter, has served as chapter delegate to the county chapter, and is a member of the area championship Parliamentary Procedure team. Dick placed second in last year's Lancaster-York area land judging contest, and finished fourth in the state contest. He placed second in that category in the 4-H-FFA contest in the state during the National Grassland Field Days at Hershey.

Dick is currently vice president of the senior class at Solanco High School, and is a member of the varsity cross-country team.

Did you know that one quart of milk weighs 2.15 pounds?

Weather Forecast

Temperatures for the five-day period, Saturday through Wednesday, are expected to average near, or slightly above, the normal range of 80 to 58 degrees. The weatherman expects little day-to-day variation, but says it may be cooler toward mid-week.

Precipitation may total 1-1/2 inch, occurring as showers in our area about Tuesday or Wednesday.

Hershey Cow & Fisher Herd Top April DHIA

The highest single 305 day lactation completed in April under the Red Rose Dairy Herd Improvement Association was by a registered Holstein owned by Earl L. HERSHEY, Quarryville R2. She made 18,254 pounds of milk and 776 of butterfat.

Second high lactation was scored by a registered Holstein owned by Herbert and Rhelda ROYER, 2025 Oregon Pike, Lancaster. Jewel produced 19,885 pounds of milk and 767 pounds of fat.

High herd average for April went to Bennie L. FISHER of Ronks R1. Fisher's 18 registered and grade Holsteins averaged 66 pounds of butterfat and 1786 pounds of milk.

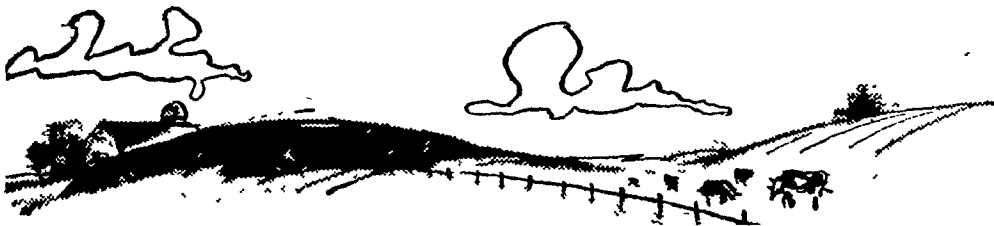
A close second on herd average butterfat for April was Mervin NEFF, Mount Joy R2, whose herd of 312 registered and grade Holsteins averaged 64 pounds of fat and 1630 pounds of milk.

Some Thoughts For...



Dairy

Farmers!



JUNE IS DAIRY MONTH

- Did you do all you could to help promote your industry in the past year?
- Do you talk milk to consumers?
- Do you explain its many nutritional advantages?
- Do you set the example when you take your family out for a meal and order milk as the beverage?
- Do you have the feeding program which gives you the best return per dollar spent?

If you are in doubt about this last item talk to our Nutrition Department or our Dairy Specialist.

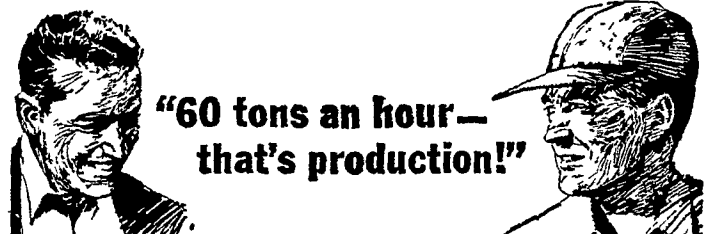
What else can we do to help you?

Just call

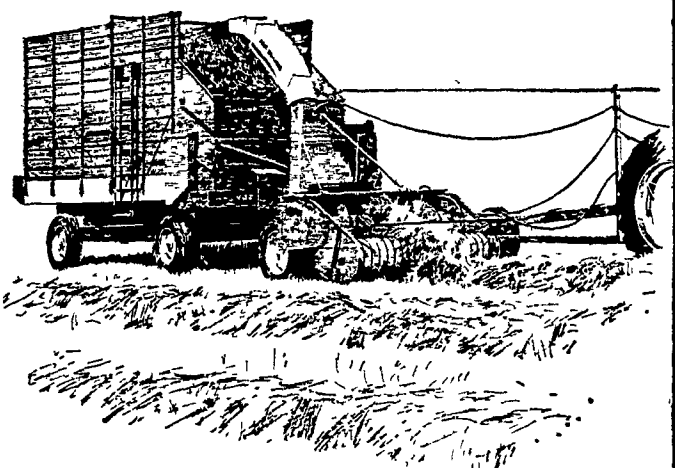


Miller & Bushong, Inc.

Ph. Lancaster 392-2145 Rohrerstown, Pa.



"60 tons an hour— that's production!"



Big capacity, uniform cut, with Allis-Chalmers 780 Forage Harvester!

The 780 with pick-up head uses 64 fingers to comb the windrows and feed a steady stream to the six 36" Cut-and-Throw knives. Knives adjust to the shear bar for clean cut... 7/32" to 2 1/4". Direct-cut head takes 6 1/2-foot swath. Or switch to 1 or 2-row corn head in season. Chop fine forage fast with a 780!

N. G. Myers & Son
Rheems, Pa.

Grumelli Farm Service
Quarryville, Pa.

Chet Long
Akron, Pa.

L. H. Brubaker
Lancaster, Pa.

L. H. Brubaker
Lititz, Pa.

Nissley Farm Service
Washington Boro, Pa.

Allen H. Matz Farm Equipment
New Holland