

Groff's Spring Sale Starts June 4

**TERRIFIC VALUES!
SUPER BUYS!**

Aluminum Folding Chairs \$1.99
12 piece set tumblers 25c
with purchase of \$5. or more

Just a few of the many bargains
18" Huffy Rotary Mower \$45.
7" Black & Decker Saw \$26.88

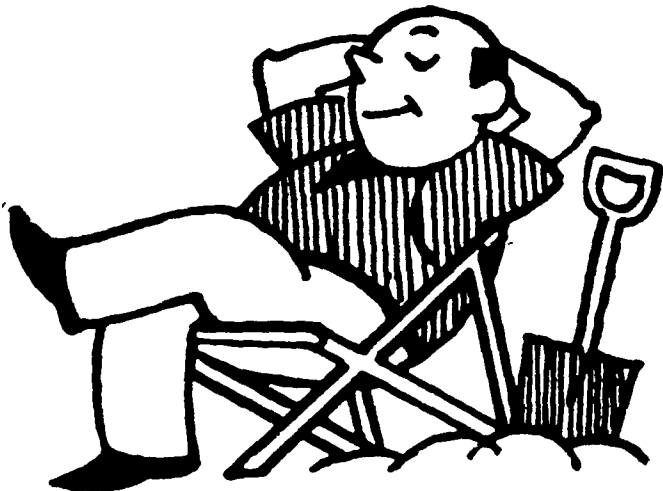
West Bend Aluminum Sale
including teflon items.
Hotpoint Air Conditioners

Groff's Hardware

100 S. Railroad Ave. New Holland

Open Thurs. & Fri. Evenings

Phone 354-0851



**NOW LET YOUR DOLLARS
WORK FOR YOU**

Isn't it pleasant to sit back and relax after working hard? Don't let the dollars you've worked for sit idle, though — put your reserve funds into an insured savings account here, where they'll earn a worthwhile return. Each saver's funds are insured to \$10,000. A convenient amount opens your account.

ACCOUNTS
INSURED TO \$10,000



25 North Duke St.

Phone 393-0601

Mon. thru Thurs.
9 to 4:30

Fri.
9 to 6

Sat.
9 to noon

NFU Endorses Permanent Milk Program

The National Farmers Union recently urged Congress to enact legislation which would make the special milk program permanent with progressive steps in funding.

In testimony delivered to a Senate Agriculture Subcommittee, NFU President Tony T. Dechant said the program is of economic importance to dairy farmers and is in the public interest for its contribution toward improving the nutrition and health of our children.

"Under the program, more than 1.5 billion pounds of fluid milk will be consumed this year in our Nation's schools. Another 15 billion pounds of milk will be consumed in the school lunch program in the form of fluid milk, butter, cheese and other dairy products," Dechant told the Subcommittee on Agricultural Production Marketing and Stabilization of Prices.

Dechant noted that Congressional support given the special milk program this year is a reflection of widespread pub-

lic support both for its extension and for increasing the funds to meet the need created by an increasing school enrollment.

"Farmers Union asked Congress in Senate and House Agriculture Appropriation hearings to fund the special milk program in keeping with the increase in school enrollment. The response has been gratifying," Dechant said. "The next logical step, we believe, is to make the program permanent with the progressive steps in funding spelled out in S. 2921."

The bill would increase authorized funds by \$5 million annually beginning with the 1966 fiscal year in which \$105 million would be authorized, through fiscal year 1969 when the objective of \$120 million would be reached. "If in the interim," Dechant continued, "these projected annual levels are not sufficient, we urge the Congress to take the necessary steps to increase the annual authorizations to the level needed to keep pace with school enrollments and further demand."

In conclusion, Dechant stressed the importance of expanding, as rapidly as possible, the special milk program to all eligible schools, summer camps and other institutions that want it.

CUSTOM SPRAYING

HIGH PRESSURE WASHING

and

DISINFECTING

in all types of poultry houses.

MAYNARD L. BEITZEL

Witmer, Pa.

Phone 392-7227

AGWAY IS ROLLING ---

on a

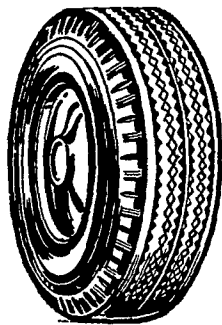
INVENTORY CLEARANCE TIRE SALE

LIMITED SUPPLY UNICO MARK II

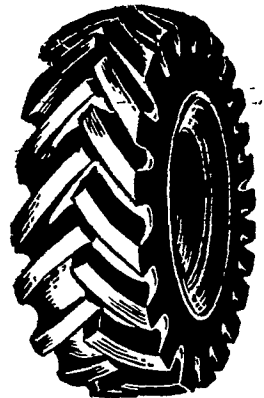
W-Wall - 775 x 14 tubeless \$18.90*

W-Wall - 670 x 15 tube type \$17.78*

*State tax to be added



COME IN AND SELECT
OTHER TYPES AND SIZES
PRICED TO SELL



PASSENGER CAR — TRUCK

IMPLEMENT — TRACTOR TIRES

Additional Discounts For Volume Purchases Over \$250.

SALE PERIOD - During June

Contact Any of Following Stores

New Holland

Lancaster

Honey Brook

Quarryville



Agway Inc.

