

Weekly Poultry Report

Eastern Pennsylvania And New Jersey WEEKLY SUMMARY

LIVE HENS

Prices generally unchanged on light hens. Demand good. Offerings, though slightly increased, remain insufficient for full requirements. Demand for heavy hens fair to good. Offerings barely adequate at fractionally lower prices. Prices paid at farms: Light hens 10-12c, mostly 10½-11½; Heavy hens 19-21, mostly 19-20c.

Fogelsville

May 17, 1966

Hens, light 10-12, mostly 10½-11½; Hens, heavy, 16-29; Pullets 31-36; Roasters 16-35½, mostly 26-34; Turkeys, Hens 26-34½, mostly 30-34½; Rabbits 18-59, mostly 45-52; Guineas 1.05-1.20; Pigeons (per pair) 55-1.45, mostly 95-1.10; Jumbo Squabs 87½.

Total Coops Sold: 488.

Eastern Shore Exchange WEEKLY SUMMARY

Lot average prices for broilers and fryers this week on the Eastern Shore Exchange held nearly steady with last week, averaging 18.17 cents per lb.

Prices paid ranged from a low of 17.4 cents on Monday to a high of 18.9 cents per lb on Tuesday.

Sales for the week held

about even with the preceding week, totaling 1.3 million head.

Delmarva

May 20, 1966

The Delmarva broiler and fryer lot average price declined more than ½-cent to 17.85 cents per lb. Demand continued fair for moderate auction offerings. Live supplies adequate for needs.

Ready-to-cook demand improved slightly. Although commitments for next week are light, activity is beginning to build for the holiday weekend.

Estimated slaughter for today and Saturday, 875,000 head, compared to 880,000 head last weekend.

In the 24 hours preceding market close on Friday, prices paid at farms for broilers and fryers ranged 17.5-18.3 on reported purchases of 1,026,000 head.

Vintage

(Continued from Page 2)
ter lambs \$2.00-3.00 Lower. Slaughter Ewes mostly steady.

SPRING LAMBS — Choice 60-90 lbs. 26.50-30.00, Few Choice and Prime \$30.00-33.00.

SLAUGHTER EWES—Utility to Choice 6.50-12.50.

HOGS

May 14, 1966

Hogs averaged slightly higher as 127 head were sold. No lightweights were listed; 180-200 lbs., 24-26.75; 200-220 lbs., 24.75-26.50; 220-240 lbs., 24.75-26.35; 240 lbs. and up, 22.25-24.60.

Lancaster

(Continued from Page 2)
Choice 1080 lbs. \$27.50, Good and Choice 900-1075 lbs. 25-25-26.75, One Lot Good 650 lbs. \$26.50.

CALVES 500 — Good and Choice Vealers steady to \$1.00 Lower, Cull to Standard mostly steady.

VEALERS — Choice 40.00-43.00, Few Individual High Choice \$44.00-44.50, Good 39.00-41.00, Standard 36.00-39.00, Utility 31.00-36.00, Cull \$25.00-30.00.

HOGS 750 — Barrows and Gilts steady to 25c Higher. US 1-2 190-240 lbs. 25.50-26.25, US 1, 200-240 lbs. 26.25-26.75, Couple Lots 215 lbs. 27.00-27.10, US 1-3 190-250 lbs. 25.00-25.60, US 2-3 240-265 lbs. 23.50-24.50, Few US 1-2 150-185 lbs. 24.85-25.10.

SHEEP 300 — Slaughter Lambs \$1.00-2.00 Lower. Ewes fully steady.

SPRING LAMBS — Choice 60-90 lbs. 28.00-30.00, one Lot Choice and Prime 83 lbs. \$31.75, Good 25.00-28.00, One Lot Utility Near 50 lbs. \$24.00.

WOOLED LAMBS — Good 55-75 lbs. 23.50-25.50.

SHORN SLAUGHTER EWES — Utility and Good with No 2 and 3 pelts \$6.00-11.00.

Lancaster Auction

(Continued from Page 2)
ard 37.00-39.00, Utility 33.00-35.00, Few Cull 26.00-29.50.

HOGS 146 — Barrows and gilts steady to 25c Higher.

BARROWS AND GILTS — US 1-2 195-230 lbs. 25.85-26.25, One Lot US 1, 215 lbs. \$27.10, US 1-3 200-240 lbs 25.00-25.60, US 2-3 240-265 lbs. 23.50-24.50, US 1-2 150-185 lbs. \$24.85-25.10

SHEEP 61 — Slaughter

Weekly New York Egg Mkt.

From Monday, May 16th to Friday, May 20th

	Mon.	Tues.	Wed.	Thurs.	Fri.
WHITE					
Ex. Fcy. Hywts.	34	34	34	34	34
Fcy. Hywts.	32½-33	33	33	33	33
Fcy. Med.	28	27	26½	26½	26½
No. 1 Med.	28	27	26½	26½	26½
Pullets	22	22	21½	21	20
Peeweels	18	18	17½	17	15
BROWN					
Ex. Fcy. Hywts.	36	36	36	36	36
Fcy. Hywts.	35	35	35	35	35
Fcy. Med.	30	30	30	30	30
Pullets	22	22	21½	21½	21½
Peeweels	18	18	17½	17	15
MIXED					
Fcy. Hywts.	32½-33	33	33	33	33
Standards	31½	32	32	32	32
Checks	27	27	26	26	25

TREND: Top large generally cleared with extra large and jumbo firm; pullets easier, but mediums somewhat improved.

Copyright 1966 by Urner Barry Publications

Lambs fully steady.

SPRING LAMBS — One Lot Choice and Prime 83 lbs. \$31.75, Lot Choice 75 lbs. \$30.00, and Lot Good 65 lbs. \$25.00

WOOLED LAMBS — Good 55-75 lbs. \$23.50-25.50.

In absolute darkness, the human eye can detect the light of a candle 14 miles away. Its sensitivity is 300,000 times greater than the finest light-receiving apparatus.

Chicago

(Continued from Page 2)
to 50 higher Heifer and Cow beef was steady

SLAUGHTER STEERS — Prime 1200-1450 lbs. 28.50-28.75, three loads at latter price. High Choice and Prime 1150-1450 lbs. 27.25-28.25, Choice 1100-1400 lbs 26.00-27.50, Choice 900-1100 lbs 25.50-26.50, Mixed Good and Choice 900-1200 lbs 24.75-25.75, with few loads 1200-1350 lbs 25.75-26.25 Good 900-1300 lbs 23.50-25.25, Standard and Low Good 22.00-23.75.

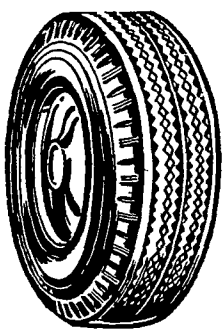
AGWAY SAY ...

"It's Time To Retire"

During Agway's Sweeping Garden Spot

TIRE SALE

Inquire About Our Discounts On

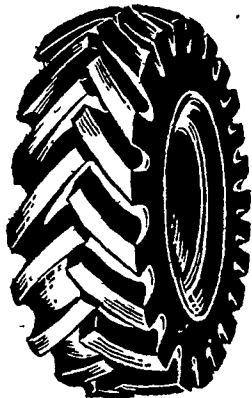


Passenger Car

Truck

Implement

Tractor Tires



Additional Discounts For Volume Purchases Over \$250.

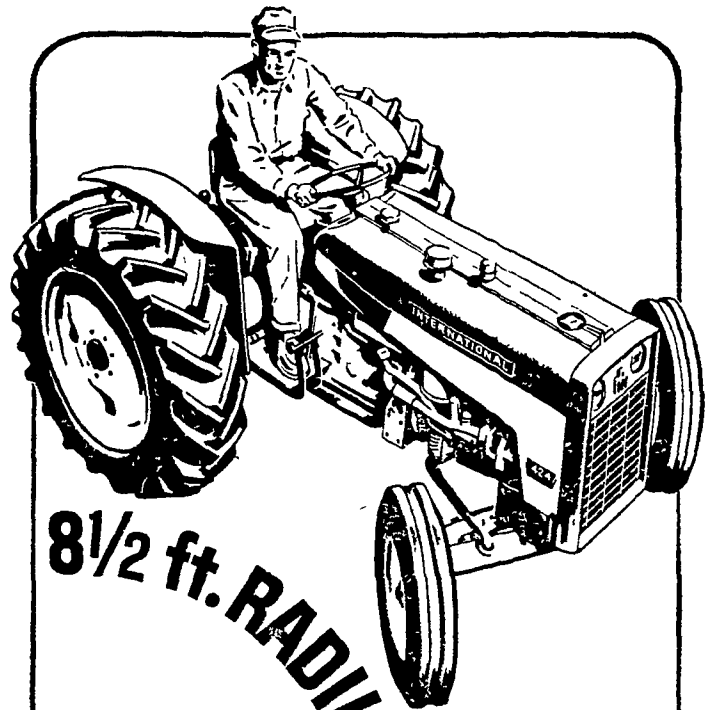
Sale Period-MAY-JUNE

Contact Stores of Garden Spot Unit

New Holland Lancaster Honey Brook Quarryville



Agway Inc.



8½ ft. RADIUS!

INTERNATIONAL®
424 THREE-PLOW TRACTOR

easy handling...hard working

Nimble as a quarter horse, the 424 can spin around at row-end and head right back. Stable, too. All the power you could use. Come in and try it out. Income purchase payments low as \$00 a month.

- 8-2 transmission • Draft-controlled 3-point hitch
- 36.9 pto horsepower gas or diesel engine
- Hydrostatic power steering • Constant-running pto

Messick Farm Equip.

ELIZABETHTOWN
367-1319

C. B. Hooper
INTERCOURSE
768-3501

Kauffman Bros.
MOUNTVILLE
285-9151

International Harvester
Sales and Service
EPHRATA 733-2283

Cope & Weaver Co.
NEW PROVIDENCE
786-7351