

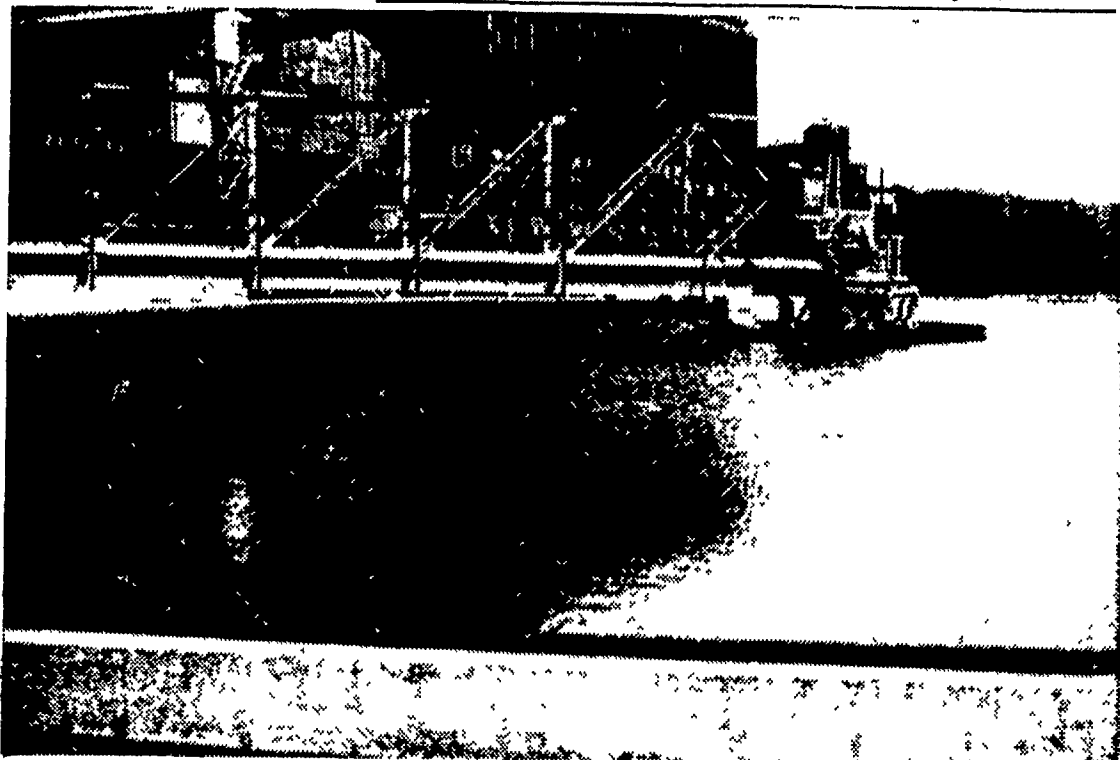
● **Waste & Water**

(Continued from Page 6)

disposal problems efficiently and in the best interests of the surrounding community. The plant could well serve as a model for other industries whose wastes are channeled into our streams. Two important points stand out from observation of this operation: (1) Although tremendous quantities of water are used in processing the product — ore — most of it is continuously reused, and the flow of the source creeks is not

diminished; (2) when the water becomes contaminated through use, it is treated and returned to the creeks in as pure, or purer, condition than in its original form.

Such constructive practices will of necessity become commonplace in the not too distant future. They should be considered now, on a voluntary basis, by all plants who are presently adding their pollutants to community waters.



ONE OF THE TWO LARGE THICKENING, or settling, basins where solids in the industrial waste water are separated. From here, the solids are disposed of, and the water is circulated for reuse. L. F. Photo

ALFA-TOX

Available Now

Distributed by

P. L. ROHRER & BRO.

Smoketown, Pa.

Phone 397-3539



Grow healthy alfalfa with Alfa-tox for weevil control. Absolutely no residue in milk.

Here's the nearest thing yet to a "perfect" alfalfa insecticide. Spray Alfa-tox... which contains both Diazinon® and methoxychlor... for control of alfalfa weevil. Control you can depend on to protect alfalfa against this destructive insect. And just about every other insect known to attack alfalfa.

A properly timed spray of Alfa-tox will protect your first cutting. Check alfalfa bud tips frequently and treat by the time 30-50 per cent of the bud tips show signs of larvae feeding. This provides effective control of larvae which have already hatched, as well as larvae which hatch following application.

Under normal conditions, control of weevil with Alfa-tox lasts for two to three weeks, which is usually ample time to assure pro-

tection of your alfalfa until harvest of the first cutting. If a repeat application is necessary, it may be made up to seven days before cutting alfalfa.

You can be sure of no danger of insecticide residue in milk with Alfa-tox. All you have to do is wait seven days after spraying before you graze livestock or cut for green chop or hay.

Ask your supplier for Alfa-tox... an insecticide you can depend on to be effective.

Geigy Agricultural Chemicals, Division of Geigy Chemical Corporation, Saw Mill River Road, Ardsley, New York 10502.

Geigy
Alfa-tox

CREATORS OF CHEMICALS FOR MODERN AGRICULTURE

Available from your feed and farm supply dealer.

Distributed by

NEW HOLLAND SUPPLY CO., INC., New Holland, Pa.

● **New Holland**

(Continued from Page 2)

ing horses, 120-650; driving horses, 125-240, killeis, 8-8 1/2 cents per lb Mules, 125-185; pony mares, 20-85; geldings, 20-100

HOGS

May 2, 1966

The \$66 head offered averaged 25 to 50 cents lower. Retail, 24-25, wholesale (U. S 1-3), 23 25-24; heavyweights, 22 25-23 No shoats or sows were listed.

CALVES

May 2, 1966

Sixty head sold \$1 higher this week with Choice and Prime bringing 38-42 50, Good and Low Choice, 34-37 50, Standard, 30-33 50, Common, 22-29 50.

Lancaster Farming
Lancaster County's Own Farm Weekly

P. O. Box 266 - Lititz, Pa. 17543

Offices:

22 E Main St. Lititz, Pa 17543

Phone - Lancaster

394 3047 or

Lititz 626-2191

Don Timmons, Editor

Robert G Campbell, Advertising Director

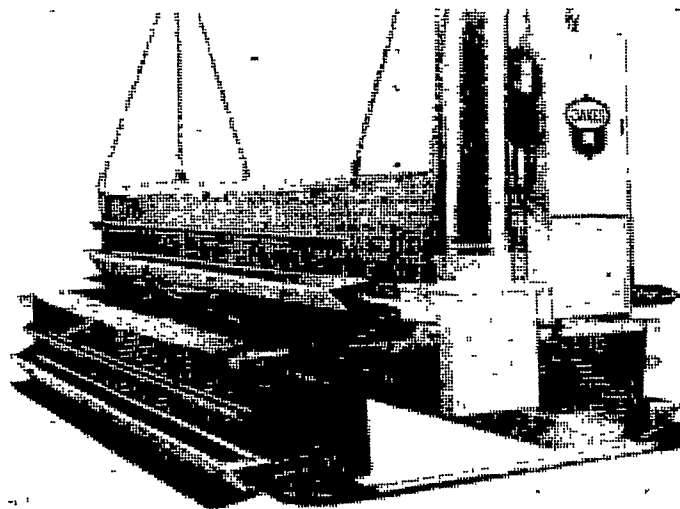
Subscription price — \$2 per year in Lancaster County, \$3 elsewhere

Established November 4,

1955 Published every Saturday by Lancaster Farming, Lititz, Pa.

Poultry Equipment

Is Our Business
Cage Automation
Is Our Speciality



ENGINEERED & DESIGNED ESPECIALLY FOR CAGE LAYERS

Check These Features:

1. Compact and trim design
2. Low initial cost
3. Labor saver
4. Feed saver
5. Even feed distribution

Distributors of quality poultry and hog equipment.

We sell, service, guarantee installation.

Beacon Steel Cages, Hart Cup Watering Systems, Brock Feed Bins, Aerovent and Coolair Ceiling and Wall Ventilation, Oakes Mechanical Cage and Floor Feeders and Hog Equipment, Herrmatic Feed Carts, Egg and Manure Handling Equipment.

E. M. Herr Equipment, Inc.

"Pioneer of Laying Cages"

R. D. 1, Willow Street (Lancaster Co.) Pa. 717-394-0654