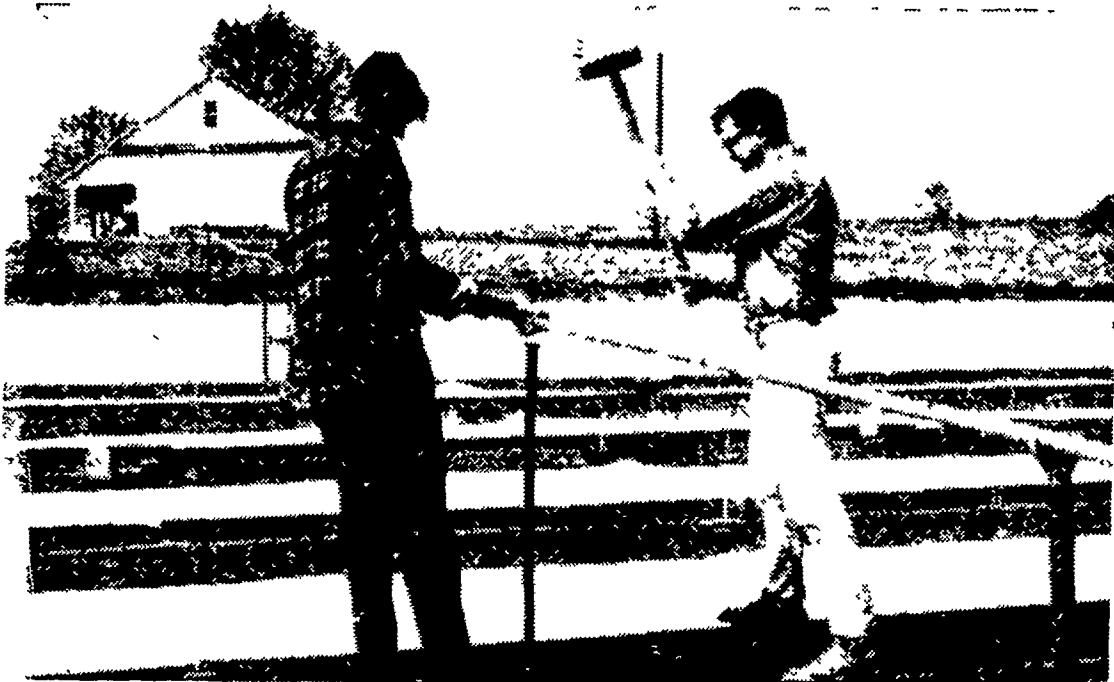


RESEARCH AGRONOMIST Henry B. Engle shows the plastic material he uses at the State Field Research Lab. to cover tobacco seedbeds, as the one on his left, which have been chemically treated for weed control prior to seeding. L. F. Photo



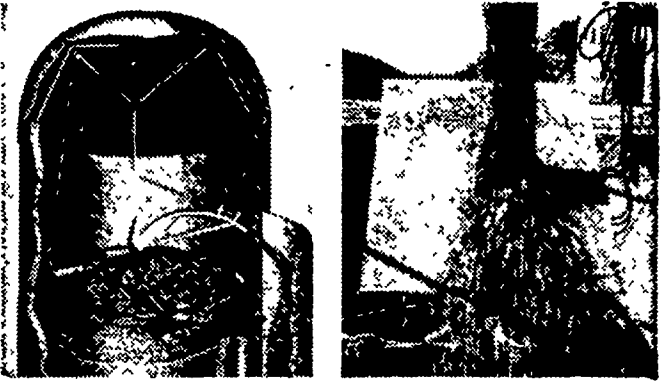
SETTING UP IRRIGATION PIPE for the Field Research Station's tobacco seedbeds are Luke Bruckhart, left, and Charles Suloff. Bruckhart is a regular employee at the Station, and Suloff works there when he isn't attending classes at Delaware Valley College. L. F. Photo

Chemical Seedbed Treatment Seen Satisfactory In Field Research

Chemically treating tobacco seedbeds for weed, insect, and some disease control has been a practice at the PSU Southeastern Field Research Lab near Landisville for many years. According to research agronomist Henry B. Engle, he has worked with chemicals for the past 12 years. Of all those he has tried, Engle says he prefers methyl bromide. "It is the most effective, and is the least trouble to handle of all the chemicals," he said. "One big advantage is you don't have to break your dirt clumps as fine as (Continued on Page 7)

YOU'VE GOT TO HAVE A SYSTEM - GO JAMESWAY POWER CHORING

BIG J SYSTEM DISTRIBUTES, UNLOADS with 1 BASIC UNIT



Distributes evenly from wall in. Gives you up to 20% more silo capacity. Easily unloads uneven frozen silage. Works for you in any season. Lowest cost combination on the market.

Converts from unloader to power-driven distributor in minutes. Just remove unloader chute, attach Fill-O-Matic distributor board, raise to top of silo, and you're ready to fill. Power Circle Drive rotates board at constant speed. Stop in for low prices.



J. Samuel Sherer

R. D. 2, Mt. Joy, Pa.

Ph. 653-0301

Yes we have . . .
**PENNGIFT
CROWN VETCH**

The new forage crop discussed in the March 12 issue of the Pa. Farmer

**P. L. ROHRER
& BRO., INC.**

SMOKETOWN
Ph. 397-3539

Alfa-Tox

for reliable
weevil control

Absolutely no residue
in milk.

Wholesale and retail
Available now at

**P. L. ROHRER
& BRO., INC.**

SMOKETOWN
Ph. 397-3539

Put All Your Corn in the Crib PLANT DEKALB



TOUGH years for corn are GREAT years to have DeKalb. Because DeKalb BREAK-THRU Hybrids are bred to stand the stresses of modern farming—thick planting and heavy fertilization . . . bred to stand, hold their ears and produce profitable yields. Next time, plant ALL DEKALB.

More Farmers Plant DEKALB
Than Any Other Brand.

Depend on
DEKALB

"DEKALB" is a Registered Brand Name

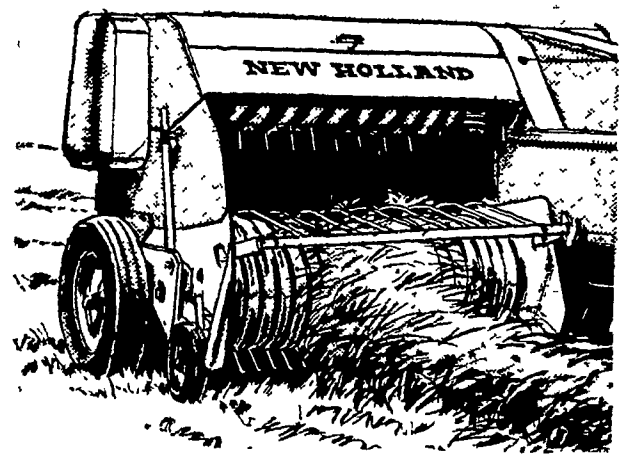


P. L. ROHRER & BRO., INC.

Smoketown, Pa.

Ph. 397-3539

New Super-Sweep Pickup Gets The Short Hay You've Been Leaving Behind!



For 1966 New Holland brings you a remarkable new Super-Sweep Baler Pickup: Six bars of 20 closely-spaced teeth—a total of 120 hay-picking fingers! Now you can sweep up the short hay and straw you've been leaving behind. The Super-Sweep Pickup is standard equipment on the heavy-duty Hayliner 281. From hitch to bale chute, this workhorse "281" is built to turn out solid, square, firmly-tied 16 x 18" bales in any crop. Stop in today and we'll show you!

NH NEW HOLLAND

Call Us For March Price and Terms!

L. H. BRUBAKER

350 Strasburg Pike, Lancaster
R. D. 3, Lititz, Pa.

Phone: Lanc. 397-5179 — Strasburg 687-6002 — Lititz 626-7766