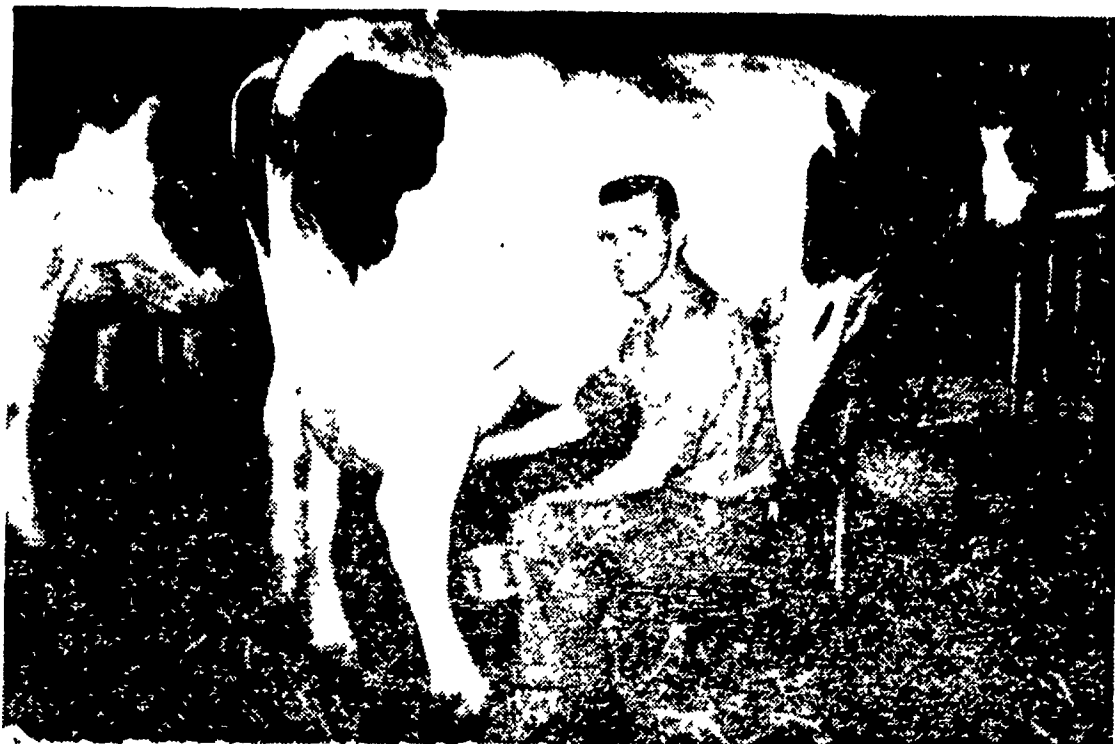


**Fultonway Farms**  
(Continued from Page 8)  
Frey's herd whose best record average is over 1000 pounds of butterfat. The herd classification average is \$2.8 points. There is one other grand old cow that must be mentioned here. She is the 16-year-old Gold Medal Wight-

wick Glenafon Rachel, classified Excellent at 93 points with a lifetime production to-date of 200,000 pounds of milk and 8,100 pounds of butterfat. Rachel is still milking and safe in calf again to Johann. Mowery credits her with getting him started when he won her in the FFA calf program. "The better job we can do



JIM BENDER, Fultonway herdsman, poses in the act of milking FULTONWAY IVANHOE RAE (VG, to symbolize the 30,110 pounds of milk and 1390 pounds of butterfat she produced in her latest record. Rae already has state and national records to her credit. Now, this year she exceeded her own record by 100 lb.

L. F. Photo

**Plant LINDSEY 77F**

**amazing new summer grazing crop!**  
**LINDSEY/FUNK'S-G**  
**SORGHUM-SUDAN HYBRID**



"High Yields of Green Chop, Pasture, Silage, Haylage, or Hay. Extra Regrowth. Top Seed Quality. Preferred by Livestock."

Ask Your Hoffman Seed Man for details or Call our NEW Phone No. 898-2261, Landisville.

**Hoffman Seeds**  
Serving farmers with finest quality seeds since 1857

with our cows the better we feel," says Frey. One of the ways they do this good job is to use preventive medicine. For example, Frey will call for the veterinarian BEFORE a cow goes down with milk fever. "We feel this is money well spent if we can keep the fresh cow milking."

Mowery likes to keep his cows in good condition, but he doesn't practice lead feeding. "I don't want a cow eating too much when she freshens because she may

stall right away," he said. "Once they get their appetite we push feed." There are two factors that determine the amount of feed Fultonways cows get: 1) the amount they will eat and 2) the amount they are milking. No cow ever gets more than 36 pounds of a 16 percent commercial mix and only two (Rae and Johanna) have gotten more than 24 pounds.

They get 45 pounds of corn silage and all the hay they can eat four times a day. Cattle have been sold into ten different states from Fultonway. Included in this list are California, Michigan, Wisconsin, Georgia, North Carolina, Virginia, New York, Maryland and Pennsylvania. Semen from the herd sire has gone into five different states. The Fultonway prefix came from Mowery's father J. Mowery Frey, Sr., who is still active in the farm operation. When Frey Sr. started farming the road that passed the home place was known as the Robert Fulton Highway. Therefore the Fultonway name.

Now there is another generation growing up at the Fultonway family farm — the children of Mr. and Mrs. Mowery Frey, Jr. Susan 7; Sandra 6; John 5; James 2 and Sheila 6 months.

**Free kitchen cutlery**  
WITH COUPONS IN RED ROSE SWINE FEEDS



For a limited time, each bag of Red Rose Pig Pre-Starter Pellets, Pig Starter Pellets and Farrowing Ration will contain a coupon worth 50¢ toward top quality Utica Kitchen Cutlery. These are professional knives. Extra heavy gauge. Blades extend through handle. Laminated for lifetime service.

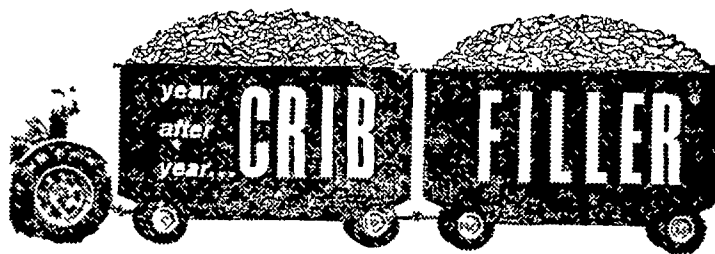
**NOW YOU CAN GO FROM PIGS TO PORK TO PROFITS—FASTER WITH RED ROSE SWINE FEEDS**

- Walter Binkley & Son  
Lititz
- Brown & Rea  
Atglen
- Elverson Supply Co.  
Elverson
- L. T. Geib Estate  
Manheim
- I. B. Graybill & Son  
Refton
- E. M. Heisey  
Mt. Joy

- Heistand Bros.  
Elizabethtown
- A. L. Herr & Bro.  
Quarryville
- David B. Hurst  
Bowmansville
- Mountville Feed Service  
Mountville
- Musser Farms, Inc.  
Columbia
- Musser's Mill  
The Buck

- Chas. E. Sauder & Sons  
Terre Hill
- Ammon E. Shelly  
Lititz
- L. M. Snavely  
Lititz
- E. P. Spotts, Inc.  
Honey Brook
- H. M. Stauffer & Sons, Inc.  
Witmer

**CRIB FILLER . . . the hybrid that lives up to its name!**



Every year, more and more cribs and bins are filled to overflowing with modern CRIB FILLER corn. Every year, CRIB FILLER Hybrids are growing bigger yields and profits, under widely varying conditions of soil and weather. Every year, leading farm managers are selecting CRIB FILLER Hybrids to achieve outstanding corn production. Phone or come in and ask us for the CRIB FILLER Hybrid specially bred to fit your specific need. When you plant . . . when you harvest, you too will find:

There's a profitable difference in . . .

**CRIB FILLER**  
HYBRIDS

- F. M. BROWN'S SONS, INC.  
Sinking Springs
- GEHMAN FEED MILL  
Denver
- KIRKWOOD FEED & GRAIN  
Kirkwood
- MUSSER'S MILL  
Buck
- WHITESIDE & WEICKSEL  
R. D. Oxford
- WEAVER'S FIX-IT SHOP  
R. D. 1, New Holland