

# waterers or complete poultryhouse systems It Pays To Deal With Big Dutchman . . . Number



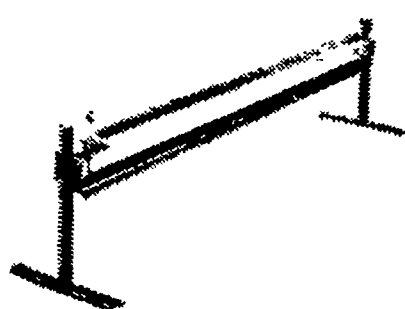
**"36" BIG VOLUME FANS . . .** These heavy-duty, low cost fans provide maximum amount of air movement to meet your ventilation requirements. "Power-Klean," self-cleaning, aluminum blades are designed for long, efficient usage. The belt driven fan carries AMCA certified ratings and can be easily located exactly where needed. A Shutter Housing Kit is available to prevent backdrafts.



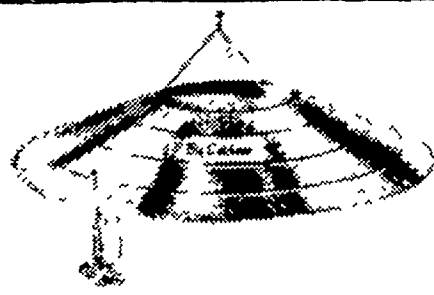
**NESTS . . .** Durable, easy-to-install Big Dutchman nests are made of heavy duty galvanized steel and are available in models for any style layer house. Outstanding features include easy installation, heavy duty brackets and perches, formed edges to prevent bruising, and removable bottoms for easy cleaning. Nests are available in either front or aisle gathering.



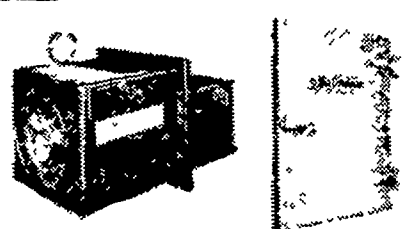
**FLAT DECK CAGES . . .** with exclusive Big Dutchman "Central Egg Collecting" automatic feeding, watering, ventilation and manure removal . . . offer the poultryman a top production system for a low investment.



**WATERERS . . .** available in a complete line of durable porcelainized and galvanized waterers specially designed for ample volume and economical automatic filling of fresh water.



**PANCAKE "31" BROODER . . .** with lifetime ceramic radiant, windproof pilot, special gas filter and accurate Robertshaw thermostat, deliver 31,000 B.T.U.'s. Offers poultrymen the best of today's brooder principles, plus Big Dutchman's advanced engineering know-how.



**EGG COOLER and COOLER ROOM DOOR . . .** provide an efficient combination to keep egg rooms at the right temperature and humidity. The Big Dutchman cooler mounts directly into the side wall of egg room, does not require water cooling and is available in four sizes. Door comes complete with hardwood and molded rubber gasket.

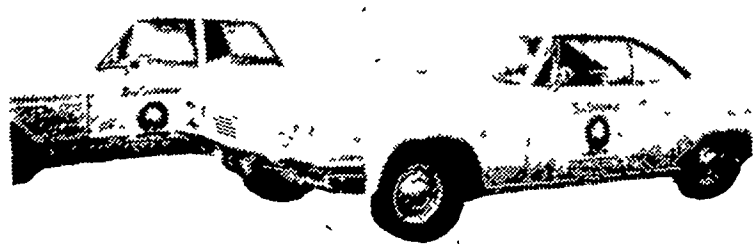


**Yes! Big Dutchman, a pioneer and leader in poultryhouse automation, is the only one prepared to offer you the finest in poultryhouse equipment or service . . . IMMEDIATELY! Only Big Dutchman has over 31 completely stocked branches throughout key poultry areas in the U.S. for immediate local service and assistance.**

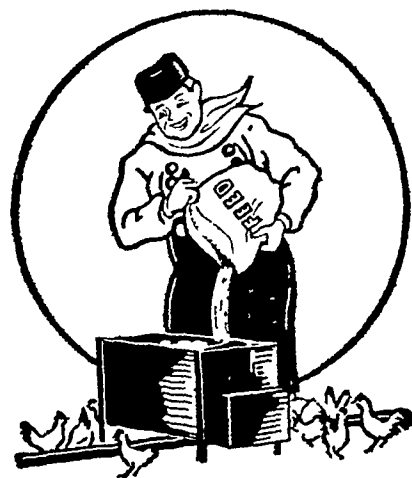
**24 HOUR**

**EMERGENCY SERVICE**

**354-5168**



**The Salesmen In These Cars Can Save You Money.**



# Big Dutchman Inc.

**PENNSYLVANIA BRANCH**

FACTORY OWNED AND OPERATED

**NEW HOLLAND**

**(717) 354-5168**